

# Kitchen makeover with Sleek shutters



Shutter Catalogue  
2016-17

Enter the world of  
infinite aesthetics  
with Sleek

Just like your heart gets instilled with the spirit of creativity, the moment you encounter the finest beauty in the world, the same way, a well-designed kitchen instills the spirit of splendor and elegance in your happy home.

Being the undisputed leader in the Indian modular kitchen industry, Sleek is set to adorn your kitchen with its exclusive assortment of shutters. Be it Sleek's very own PU Paint or every collection is sure to impress you, inspired out of mesmerizing shade of beauty that we experience in life.

So, come to the world of The Kitchen Specialist and transform your kitchen with the shade you want.



# PU Shutter

Bring a sense of incessant joy into your kitchen with Sleek PU shutters. PU shutters are made in Sleek's manufacturing plant; one of the biggest and the first automated unit in India. Automated processing ensures that the shutters come perfect in its sizes and dimensions. Packed with European finish, PU shutters compliment the looks of your kitchen at an affordable price value. The 3H pass scratch resistant test is recognition that the shutter comes with good scratch resistance power. Vibrant colors to choose from along with matt, high gloss and an exclusive pearl white finish, PU shutters will surely turn your kitchen into a true masterpiece.



Finish: Matt, High Gloss & Pearl White

Note: Silver colour shutter is charged 20% extra and Glass shutter is charged 25% extra Available in PLY and MDF. Shade may vary from batch to batch.

			
White	Cappuccino	Aubergine	Red
			
Grahite	Silver	Titanium Grey	Teal Dream
			
Turquoise Blue	Tortora Wine	Lavender Blush	Pearl White
			
Yellow Tulip	Altrosa	Quick Silver	Timberland
			
Rhinstone	Beige Rage	Steel Mesh	Retro Avocado
			
Burnt Yellowstone	Tropics	Beigerot	Bamboo Groove

Available in 26 colour options





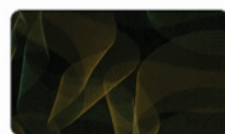
# Glitz

Uplift the look of your kitchen with Sleek's exclusive Glitz shutter. Glitz is a new addition to Sleek's fine range of shutters. It comes with a full factory processed PU finish that ensures best light reflection and smoothest surface. Glitz features seamless edges, made possible with the application of Clear Polyester and Acrylic on its surface and edges. Another feature that makes Glitz the best choice to go with, is its resistance to any climatic wear and tear. Glitz shutter is available in Ply with High Gloss finish.

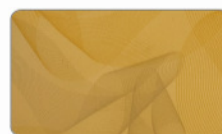


Finish: High Gloss

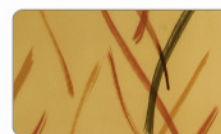
Note: Glass cutout shutter will not be provided.



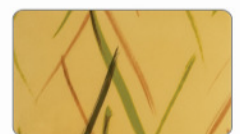
Dark Verve



Light Verve



Pink Lines



Green Lines



Antique Yellow



Sprig



Crimson



Viridian



Margarite Coal



Murky Cloud



Verde Primizia



Wild Flame



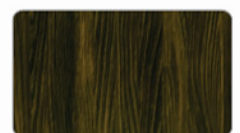
Wine Yard



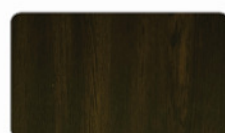
Lilac



Soot



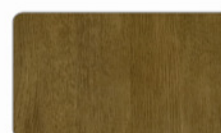
Land of the Inuit



Faux Ebony



True Lustre



Mellow Lustre



Alder



Acadian



Titian





# Pristine PU Shutter

Add a delightful touch in your kitchen with Sleek PPU shutters. Manufactured under an automated process, this ensures zero error in sizes and dimensions in the shutters. Also, to give your kitchen the best look and world-class aesthetic appeal, imported paints and applicants are used on the shutter. The shutter comes in high gloss finish. The 3H pass scratch resistant test is recognition that the shutter features good scratch resistance power. PPU shutters are sure to turn your kitchen into an impressive one.



Finish: High Gloss

Note: Glass Cut-out Shutters, Two Side Coloured Shutters and Fully coloured cabinets are not provided in PPU range. Shade may vary from batch to batch

			
Niveous	Ivory	Cappuccino	Lavender Blush
			
Royal	Turquoise Blue	Rose	Ruby
			
Bamboo Groove	True Ochre	Tropics	Dark Shadow
			
Beige Rage	Rhinestone	Titanium Grey	Timberland
			
Steel Mesh	Beigerot	Yellow Tulip	





# Glorious Glass Shutter

Turn your kitchen into a glistening beauty with Sleek Glorious Glass shutter. Made from 4mm extra clear toughened glass with 45mm imported profile. The presence of European style is something that makes the shutter a real and rare beauty which is exclusively available with Sleek in India. It is available in 26 different colours, including water droplet glass that adds a trendy style in the shutter.



Finish: Back painted glass on European Aluminium 45mm thick profile.  
Other Variant: Back painted glass on 45mm thick G section profile.

Note: Glorious glass - possible dimensions - minimum height - 160mm & maximum height 1320mm. "4mm extra clear toughened glass with 45mm imported profile" Shade may vary from batch to batch



			
White	Cappuccino	Aubergine	Red
			
Grahite	Silver	Titanium Grey	Teal Dream
			
Turquoise Blue	Tortora Wine	Lavender Blush	Water Droplet
			
Yellow Tulip	Altrosa	Quick Silver	Timberland
			
Rhinstone	Beige Rage	Steel Mesh	Retro Avocado
			
Burnt Yellowstone	Tropics	Beigerot	Bamboo Groove

Available in 26 colour options





# Veneer Shutter

A perfect trendy makeover in your kitchen is the final result, when you choose Sleek Veneer shutter. The shutter features high quality Veneer not only on its surface but also on the edges, thus adding more to its durability. Veneer Shutter comes with pre-staining and polishing feature which is done through exclusive German machines. It is available in Ply and MDF.



Finish: 4SEB style with Veneer on surface and on edge. Available in Ply and MDF.

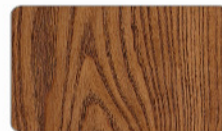
Note: Veneer shutter is available in 4 piece shutter configuration.



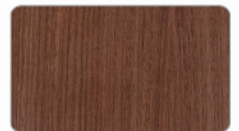
Ash Veneer with  
Wenge Stain Matt



Ash Veneer with  
Walnut Stain Matt



Ash Veneer with Teak  
Stain Matt



American Walnut  
Veneer with  
Natural Stain Matt



Oak Veneer with  
Walnut Stain Matt







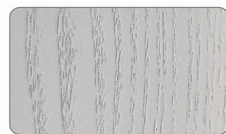
# 5 Piece Veneer Shutter

An elegant fusion of science and art, Sleek 5 Piece Veneer shutter features scientifically designed patterns that create an aesthetic look in your kitchen. Being one-of-its kind, this shutter is a perfect alternative suited for European Solid Wood kitchen. Its five piece construction is what gives it great strength and unmatched style. 5 Piece Veneer shutter is exclusively available with Sleek, making it a desirable shutter range in the market. It has a built-in design with textured and patina effect.



Finish: Veneer finish in Matt & in Patina effect

Note: GLASS SHUTTER, Two side colour PANEL & FULLY COLOURED CABINET NOT POSSIBLE.



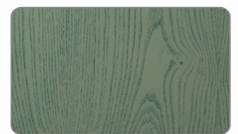
PU Ivory with  
Grey Patina



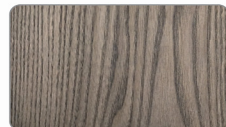
PU Cappuccino  
with Teak Patina



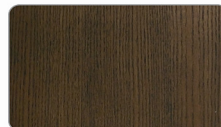
PU Cappuccino  
with Blue Patina



PU Aqua Green  
with Green Patina



Ash with Light  
Wenge Stain



Ash with Light  
Walnut Stain



Ash with Light  
Teak Stain







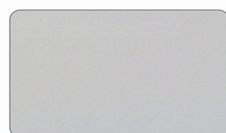
# Acrylic / Seamless Acrylic Shutter

Creating a seamless look in your kitchen is now possible with the exclusive Sleek Acrylic shutters. Designed by merging the edges with the surface, Acrylic shutters bring out the elegance of your kitchen. A specialised machine is used to ensure dust doesn't settle on the edges. This ensures there's no visibility of the edge line, enhancing the overall appeal of your kitchen. Acrylic shutters can resist the effects of severe weather conditions, thus standing the test of time. It is available in 95 units of gloss along with solid, metallic, wooden and 4SEB finishes.

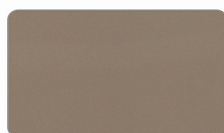


Finish: In 4SEB style and in Seamless Style. Colours in Solid, Metallic and Wooden.

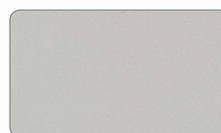
Note: Two side coloured PANEL & FULLY COLOURED CABINET NOT POSSIBLE. Only available in Ply. Glass shutter in Acrylic is not possible.



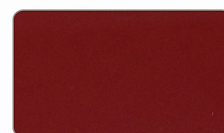
Arctic



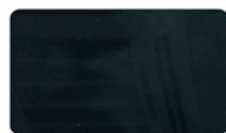
Cappuchino



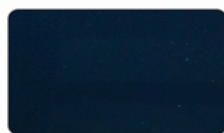
Alabaster



Cherry



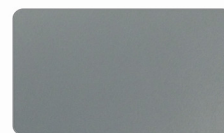
Carbon



Sapphire



Graphite



Silver



Purple



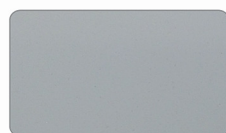
Pistachio



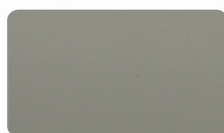
Light Zebrano



Dark Zebrano



Pearl White



Sand







# PU Inclined Shutter

Give your kitchen a neat and elegant look with Sleek Inclined shutters. Introduced for the first time in India, the shutter is exclusively available with Sleek. Featuring a first-of-its kind handleless concept, made possible with a prominent 45 degree slope on top which acts like a handle. Inclined shutters can be used with flat gola and filler profile, along with LED lighting on the gola lines to enhance the look of the kitchen. It is available in various colours.



Finish: PU High Gloss in which one of the sides with an inclination.

Note: Prominent 45 degree slope down the top of shutters that acts like handle and look sublime when fitted. Incline shutters to be used with Flat Gola profile/flat filler band.



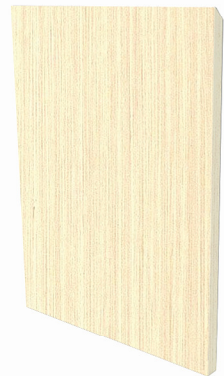
			
White	Cappuccino	Aubergine	Red
			
Grahite	Silver	Titanium Grey	Teal Dream
			
Turquoise Blue	Tortora Wine	Lavender Blush	Pearl White
			
Yellow Tulip	Altrosa	Quick Silver	Timberland
			
Rhinstone	Beige Rage	Steel Mesh	Retro Avocado
			
Burnt Yellowstone	Tropics	Beigerot	Bamboo Groove





# Inclined Shutter (Laminate)

Give your kitchen a neat and elegant look with Sleek Inclined shutters. Introduced for the first time in India, the shutter is exclusively available with Sleek. Featuring a first-of-its kind handleless concept, made possible with a prominent 45 degree slope on top which acts like a handle. Inclined shutters can be used with flat gola and filler profile, along with LED lighting on the gola lines to enhance the look of the kitchen. It is available in various colours as well as in high gloss and matt finishes.



Finish: Laminate High Gloss 4 side edge banded in which one of the sides with an inclination.  
Laminate Matt 4 side edge banded in which one of the sides with an inclination.

Note: Prominent 45 degree slope down the top of shutters that acts like handle and look sublime when fitted. Incline shutters to be used With Flat Gola profile, with flat filler band.



			
Highland Pine	Pure Oak	Malay Cane	Wenge
			
Balinese Pine	Cantaerbury Oak	Auburn Oak	Frosty White
			
Elevated Wood	Pure Oak	Shangrilla	Black
			
Carnival	Frosty White	Black Current	Champagne
			
Berry Bunch	Misty Dreams Black	Peanut	Misty Dreams White
			
Pearl White	Alumina Pearl	Steel Pearl	





# Post Form Shutter

The stylish Sleek Post Form shutters give a visual appeal to your kitchen. In order to make each shutter stand out from the rest, they are processed using advanced CNC machines. This enables the Post Form shutter to be built with precision ensuring zero chipping or chip lines and leaving no room for moisture to get in. Post Form shutters are available in solid and wooden colours, giving your kitchen a premium yet classy look.



Finish: Laminate Matt

Note: Laminate shutter maximum height 1500 mm. Valance arch would be charged 10% extra (based on finish selected). High Gloss shutters not possible in Post Form.



Mediterranean Oak	Wenge	Canadian Walnut	Balinese Oak
Arizona Walnut	Horizontal Oak Scan	Helsinki Oak-sf	Nice Wood
Acacia Exodus	Brown Oak	Malay Cane	Pure Oak
Red Oxford Cherry	Auburn Oak	Cantaerbury Oak	Alumina Pearl
Shangrilla	Misty Grey	Peanut	Frosty White
Pearl Black	Sunny Bisque	Siberian Oak	Meadow Oak







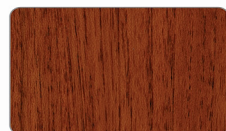
# Solid Wood Shutter

Sleek Solid Wood shutters is the ideal shutter for those who prefer the natural wooden look in the kitchen. With exclusive classy and royal appeal, it is constructed from high quality seasoned wood, with an available option of Teak & Oak to choose from. Its durable construction lets it withstand damages from even the harshest changes in the climate. This way, you can add a perfect touch in your kitchen, which stays beautiful for long.

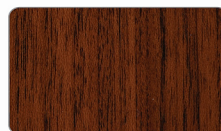


Finish: Raised Arch and Raised Rectangle (both options) Available in Teak and Oak Wood.  
Available stains - Teak, Light walnut, Wenge, and Cherry.  
Shutter Design in Mesh glass & Jali glass also available, Cornice and Railing will be provided.  
(Cornice will be veneer MDF) and railing would be of wood (oak or teak and as per stains mentioned above - one can choose from)

Note: Visible sides comes in Veneer.



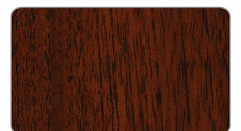
Teak - Teak Stain



Teak - Light Walnut Stain



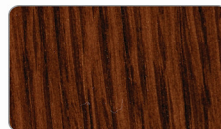
Teak - Wenge Stain



Teak - Cherry Stain



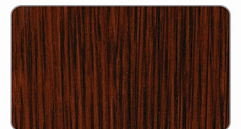
Oak - Teak Stain



Oak - Light Walnut Stain



Oak - Wenge Stain

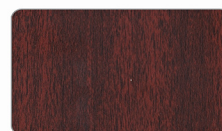


Oak - Cherry Stain

## Matching Laminates



Hippe Wood



Claret Mahogany



Clay Cherry





# 4SEB Shutter

Sleek 4SEB shutter adds an element of panache in your kitchen. Processed from technologically advanced CNC machines to ensure these shutters are flawlessly built. This leaves no room for moisture to enter as there are no exposed sides or corner. An aspect that makes 4SEB shutter stand on par with European imported shutters is its zero chipping feature. 4SEB shutters are available in solid and wooden colours along with matt and high gloss finish.



Finish: Laminate in High Gloss & Laminate in Matt

Note: Laminate shutter maximum height 1500mm. Valance arch would be charged 10% extra (based on finish selected). 4 side edge-banded laminated shutters.



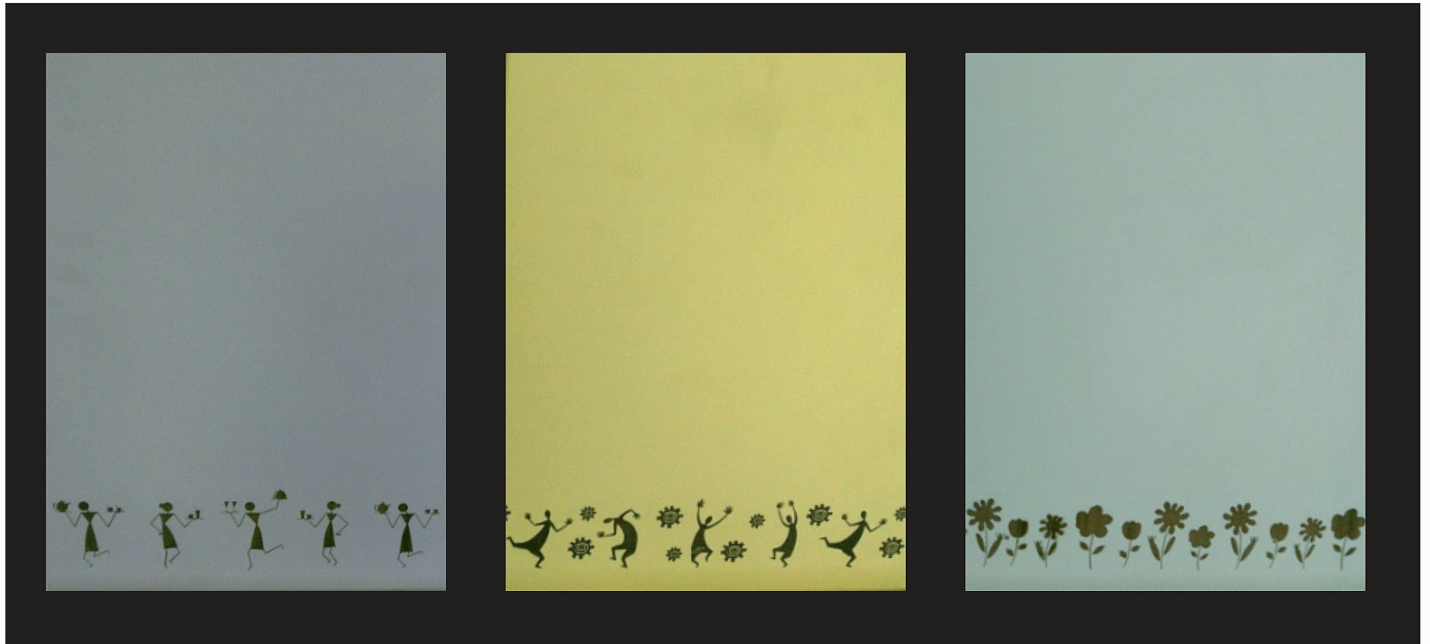
			
Shangrila	Champagne	White	Poppy
			
Tan	Saffron	Blue Danube	Blush
			
Caven Acacia	Crescent Acasia	Aromita Acacia	Corn Yellow Elegant
			
Steel Frost	Prairie Green	Pink Dawn	Jaisalmer
			
Lavender	Marigold	Lime	Shore
			
Autumn Leaf	Sunflower	Sapphire	Misty Dream Cream

Available in 96 colour options

IMP. Note: The colors shown are for indication only, please refer actual sample or shade card for exact color.

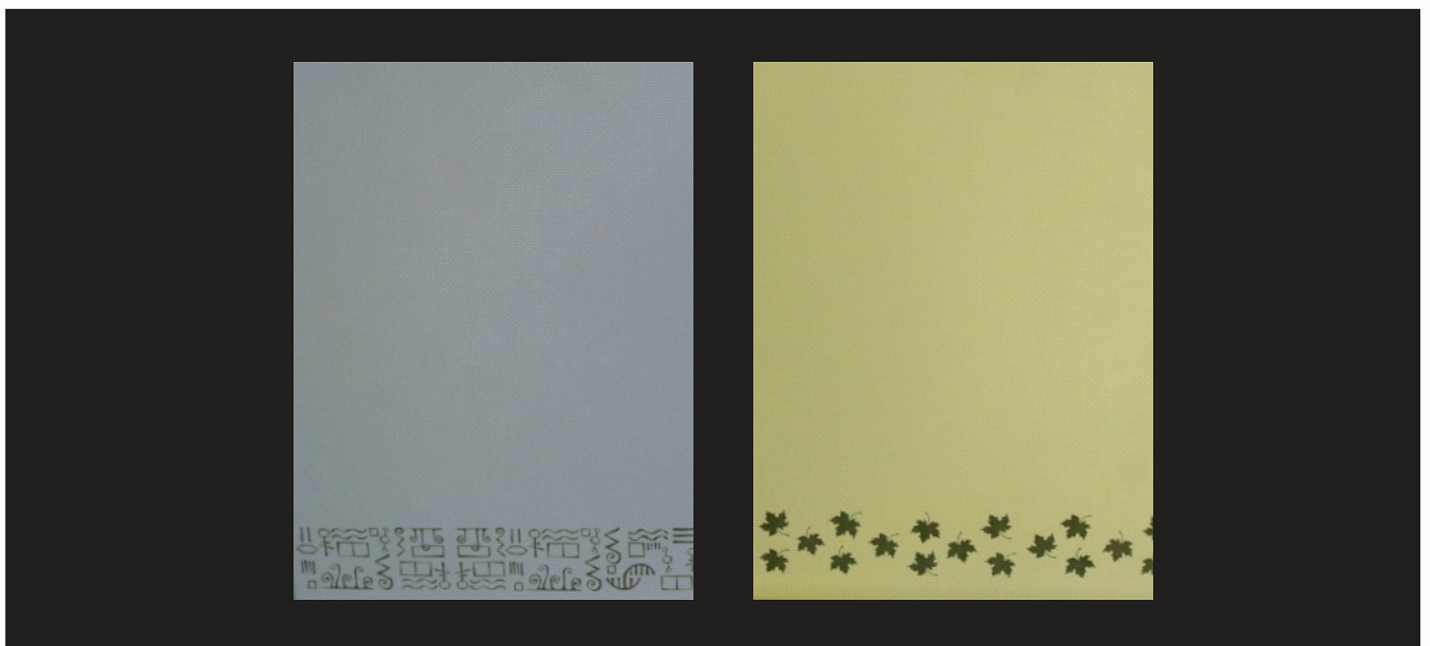


# Artize Range Of Laminated Shutters

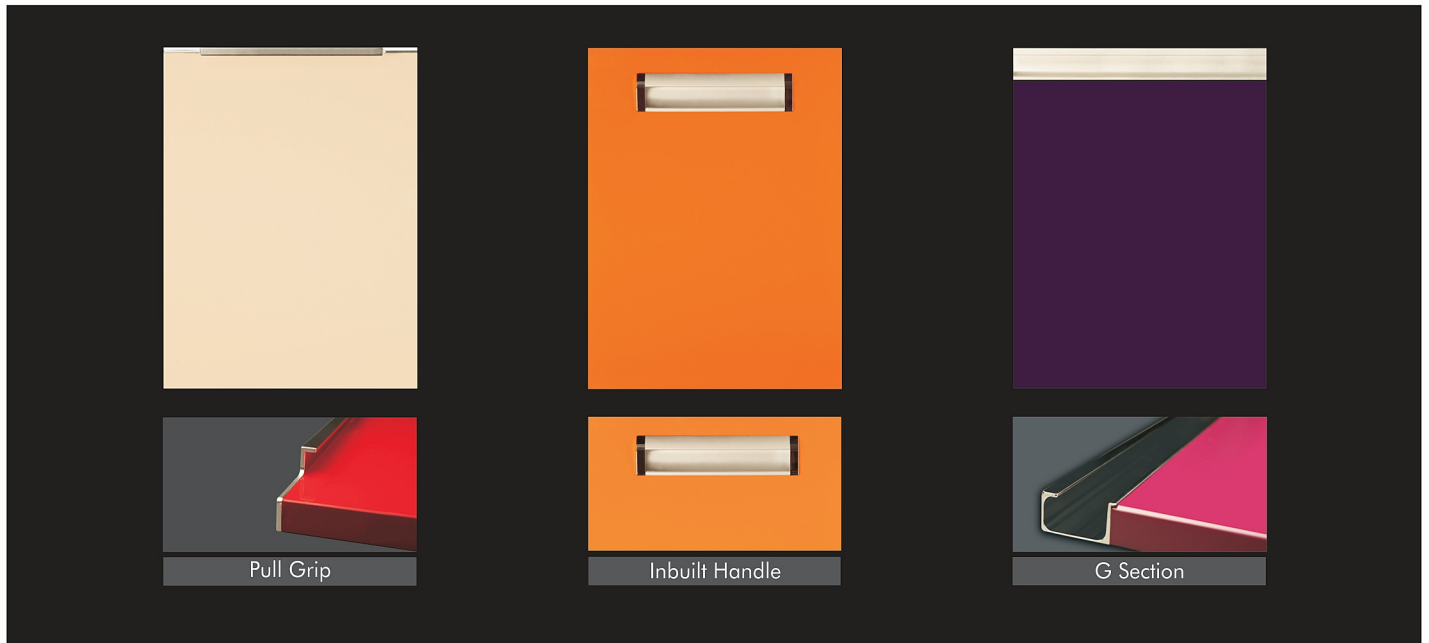


Now your kitchen can boast of an artistic look with Sleek's latest shutter addition – Artize. Created from technologically advanced CNC machines to ensure these shutters are meticulously built. This process also protects the shutter edges from creating a vacuum for moisture to enter. Another aspect that makes Artize stand on par with international standards is its zero chipping features. Artize is available in 6 colours and 5 designs along with matt finish.

Finish: Matt

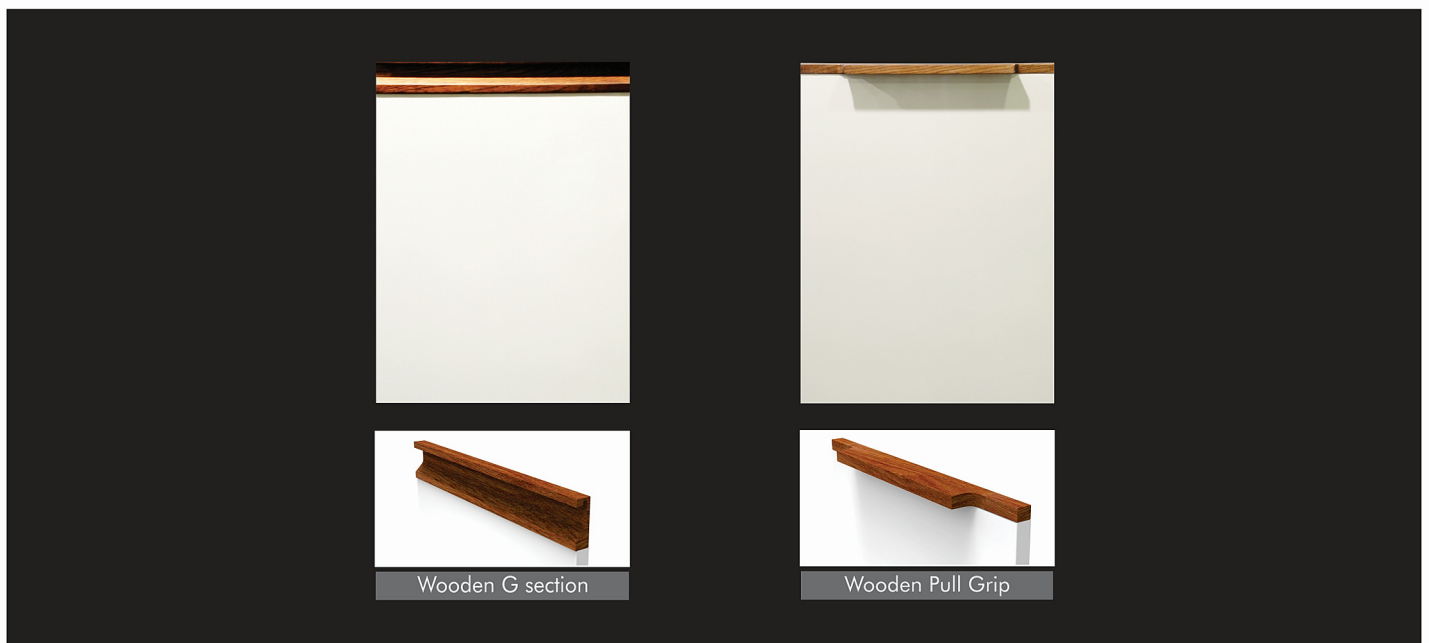


# In-Build Profile Handles



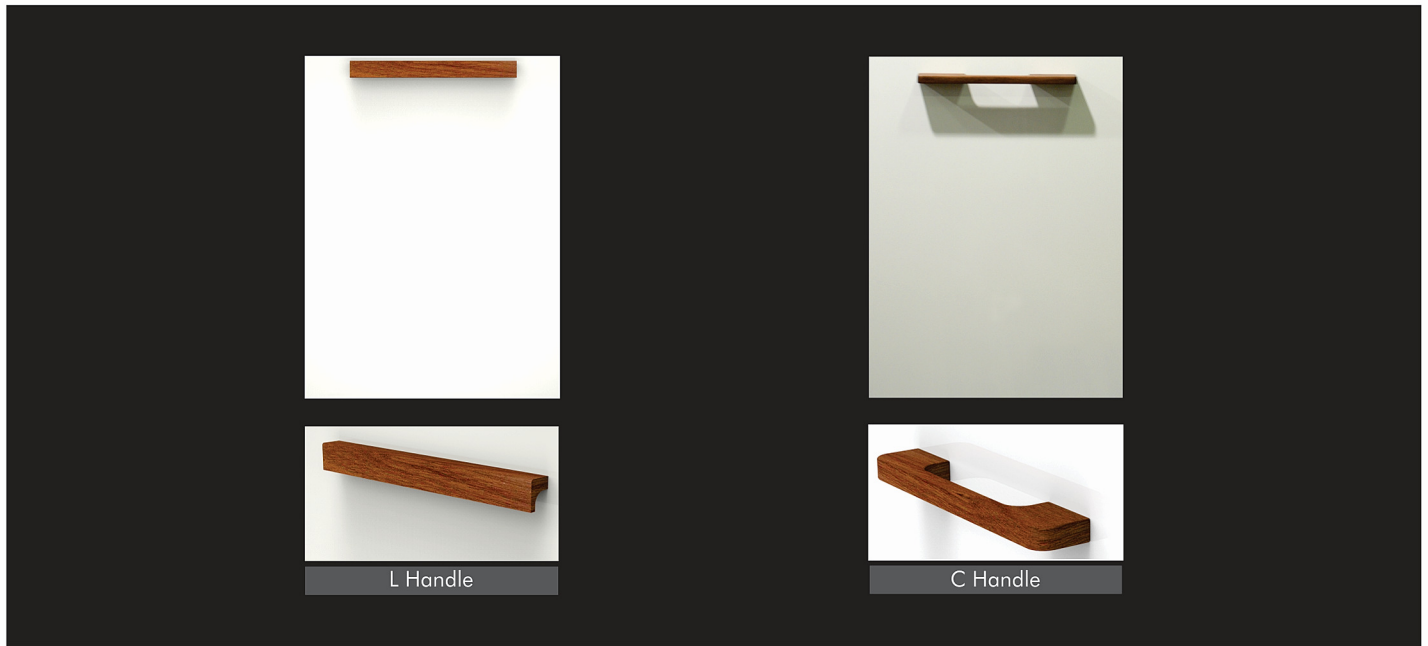
Note: All these handles can be given in any type of shutter category. These are factory fitted in-built handles which can be taken in any type of shutter category Pull grip handle available only in anodized finish.

# In-Built Wooden Handles



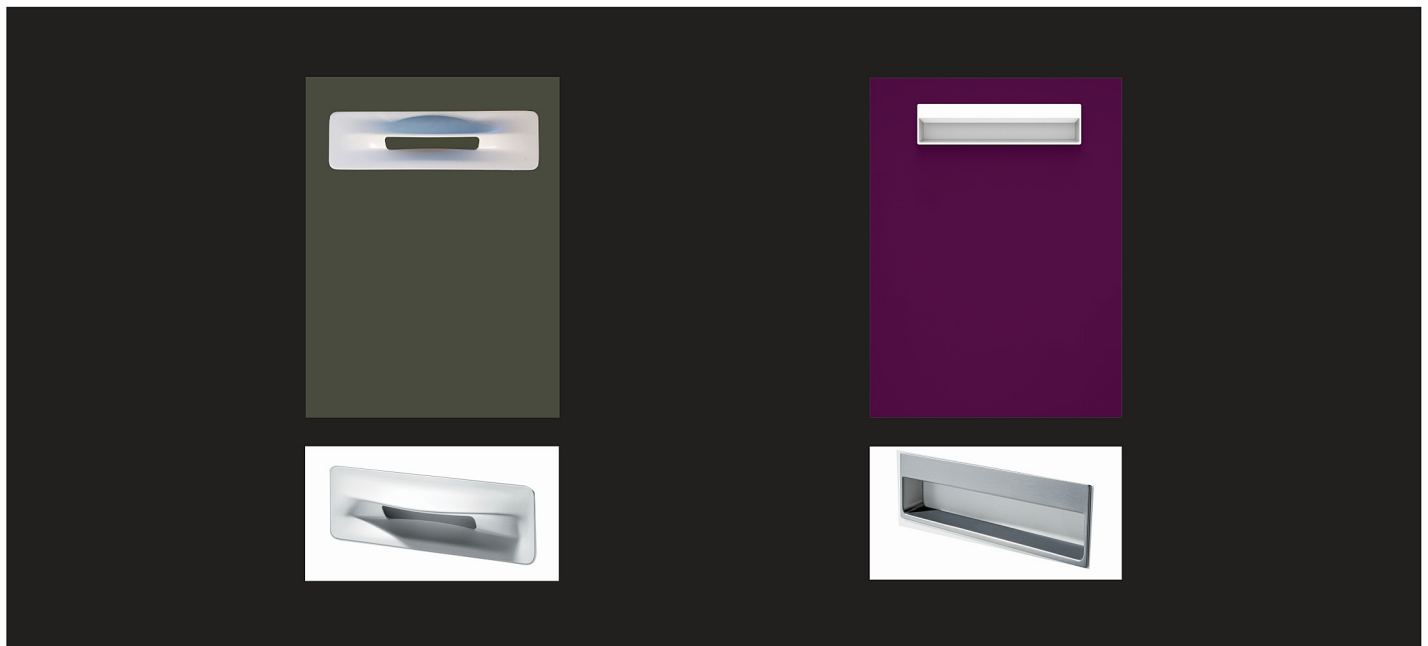
Note: Factory fitted handles available only with PU and Pristine PU shutters.

# Wooden Handles



Note: Can be used with any type of shutter (gets fitted at site)

# European Handles



Note: Only available on PU shutters.





SLEEK INTERNATIONAL PVT. LTD.  
Call: 1800 21 20 200 | [www.sleekworld.com](http://www.sleekworld.com)

The colors shown are for indication only.  
Please refer actual sample or shade card for exact color.

© Copyrights reserved. Sleek International Pvt. Ltd. 08/2016

"All the information and contents on the booklet/Web Site/brochure/catalogue are owned and exclusive property of Sleek International Pvt. Ltd., and protected under the Copyrights Act, 1957 and the Copyright Laws of all other countries worldwide under the Berne Convention. All rights are reserved and no part of this booklet/Web Site/brochure/catalogue shall be reproduced, stored in a retrieval system or transmitted in any form or by any means - electronic, electrostatic, magnetic tape, mechanical, printing, photocopying, recording or otherwise including the right of translating in any language without the prior written consent of Sleek International Pvt. Ltd."