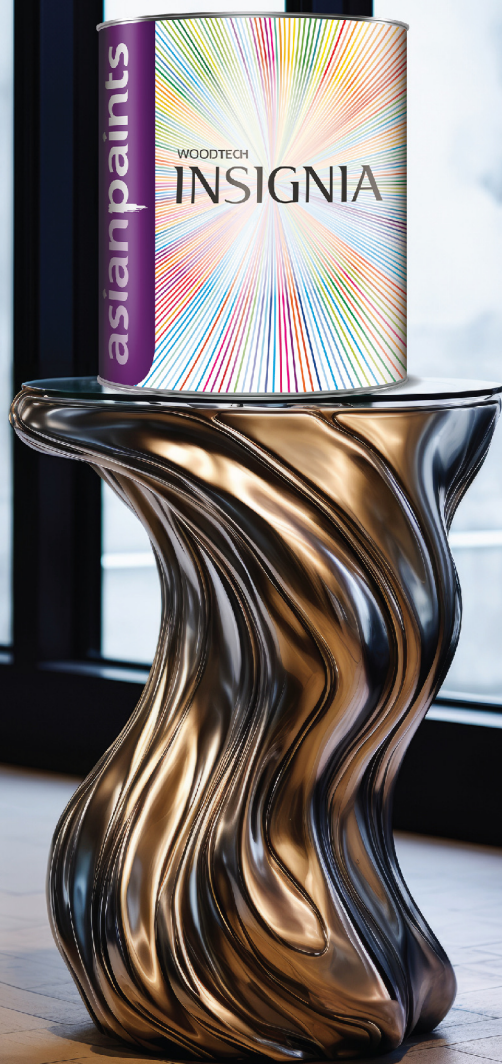


asianpaints

WOODTECH  
**INSIGNIA**

ITALIAN RANGE OF DESIGNER FINISHES



Preferred by Architects and  
Interior Designers.

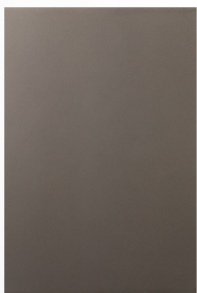
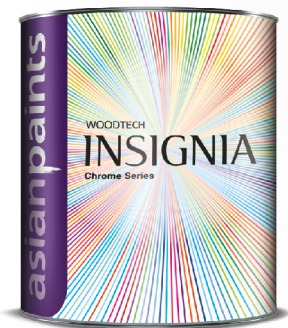


# NOW, ADD DÉCOR TO YOUR WOODEN FURNITURE!

Asian Paints WoodTech Insignia gives your wooden surfaces a sophisticated, luxurious and transformative finish.

Available in 9 Classic Effects, 4 Chrome and 8 Metallic Shades.

# WOODTECH INSIGNIA CHROME



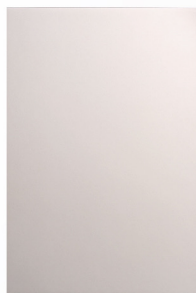
Champagne



Rose Gold



Gold



Silver



# APPLICATION PROCESS



## Step 1

Sand the surface using Sandpaper No.180.  
Wipe the surface to clean off the dust particles.



## Step 2

Apply 1-2 Coats of Woodtech Epoxy Insulator or Epoxy Neo to avoid Moisture and oil from the wood substrate.



## Step 3

Apply WoodTech Filler with a putty knife if any dents exist.



## Step 4

Mix WoodTech Emporio PU Black Sealer with a mixing ratio of 2:1. Use a PU thinner to thin the mixture (30-35%)



## Step 5

Apply 2- 3 coats of Emporio Black Sealer. Give an interval of 3-4 hrs in between each coat.



## Step 6

Sand the surface using Sandpaper No. 320 between each coat. Wipe the surface to clean off the dust particles.



## Step 7

Now mix WoodTech Emporio PU Black Glossy with a mixing ratio of 1:1. Use a PU thinner to thin the mixture (40-50%)



## Step 8

Apply 1-2 coats of Emporio Black Glossy. Give an interval of 3-4 hrs in between each coat. No sanding is required for the second coat of Black Glossy.



## Step 9

Ensure the surface is dust-free. If any dust persists, buff the surface & clean it properly.



## Step 10

Next, apply 1 coat of WoodTech Insignia Chrome with reduced air pressure and material quantity.



## Step 11

Apply 8-10 passes to get the effect properly. Avoid heavy deposition of material.

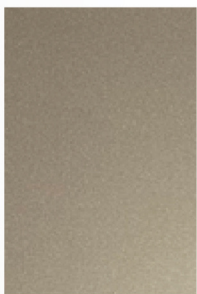
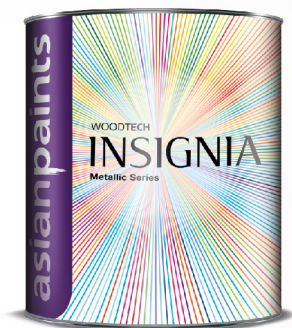


## Step 12

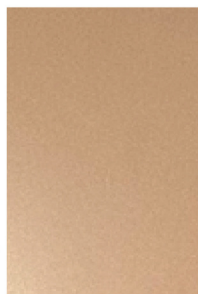
Wait 30-60 minutes & apply 2 coats of Emporio Acrylic Clear Matt or Gloss with the recommended mixing ratio.



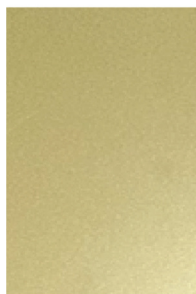
# WOODTECH INSIGNIA METALLICS



Cedar



Sunset



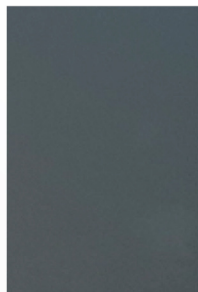
Moss



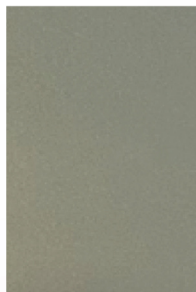
Copper



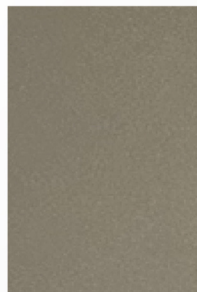
Orche



Obsidian



Pewter Green



Graphite Grey



# APPLICATION PROCESS

## Step 1



Sand the surface using Sandpaper No.180. Wipe the surface to clean off the dust particles



## Step 2



Apply 1-2 Coats of Woodtech Epoxy Insulator or Epoxy Neo to avoid Moisture and oil from the wood substrate.

## Step 3

Apply WoodTech Filler with a putty knife if any dents exist.



## Step 4



Mix WoodTech Emporio PU Black Sealer with a mixing ratio of 2:1. Use a PU thinner to thin the mixture (30-35%)

## Step 5

Apply 2- 3 coats of Emporio Black Sealer. Give an interval of 3-4 hrs in between each coat.



## Step 6

Sand the surface using Sandpaper No. 320 between each coat. Wipe the surface to clean off the dust particles.



## Step 7

Now mix WoodTech Emporio PU Black Glossy with a mixing ratio of 1:1. Use a PU thinner to thin the mixture (40-50%)



## Step 8

Apply 1-2 coats of Emporio Black Glossy. Give an interval of 3-4 hrs in between each coat. No sanding is required for the second coat of Black Glossy.

## Step 9

Ensure the surface is dust-free. If any dust persists, buff the surface & clean it properly.



## Step 10

Next, apply 1 coat of WoodTech Insignia Metallic with a mixing ratio 5:1 and thin the mixture with 40-50% thinner.



## Step 11

Apply 1 coat of WoodTech Insignia Metallic with reduced air pressure & material quantity.



## Step 12

Apply 8-10 passes to get the effect properly. Avoid heavy deposition of material.

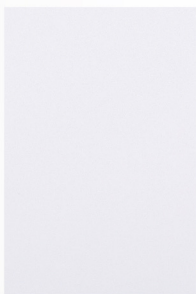
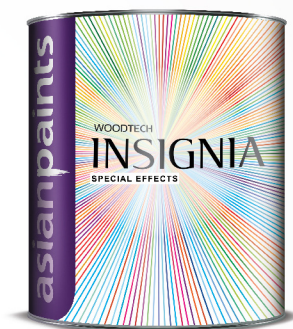
## Step 13

Wait 30-60 minutes & apply 2 coats of Emporio Acrylic Clear Matt or Gloss with the recommended mixing ratio.



# WOODTECH INSIGNIA SPECIAL EFFECTS

(DISTINCT LOOK, UNIQUE TOUCH)



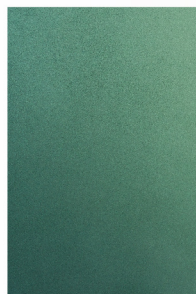
Large Pearl



Hammered Pearl



Mother of Pearl



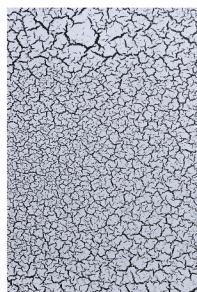
Iridescent



Stringy



Silver Micaceous



Craqulet



# APPLICATION PROCESS

## Step 1



Sand the surface using Sandpaper No.180. Wipe the surface to clean off the dust particles.



## Step 2



Apply 1-2 Coats of Woodtech Epoxy Insulator or Epoxy Neo to avoid Moisture and oil from the wood substrate.

## Step 3

Apply WoodTech Filler with a putty knife if any dents exist.



## Step 4

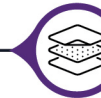


Mix WoodTech Emporio PU Black or White Sealer with a mixing ratio of 2:1. Use a PU thinner to thin the mixture (30-35%)



## Step 5

Apply 2- 3 coats of Sealer. Give an interval of 3-4 hrs in between each coat.



## Step 6



Sand the surface using Sandpaper No. 320 between each coat. Wipe the surface to clean off the dust particles.

## Step 7

Now mix the desired shade of WoodTech Emporio Palette Matt with a mixing ratio of 2:1. Use a PU thinner to thin the mixture (30-35%)



## Step 8



Next, mix WoodTech Insignia Special Effect with the recommended mixing ratio & thin the mixture with PU Thinner.

## Step 9

Apply 1 coat of WoodTech Insignia Special Effect. Ensure material quantity should be uniform & sufficient to get the desired effect.



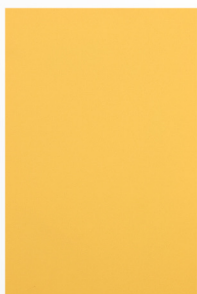
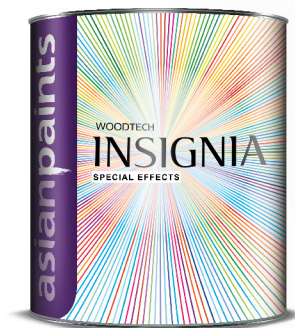
## Step 10



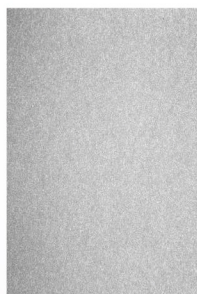
Wait 30-60 minutes & apply 2 coats of Emporio Acrylic Clear Matt or Gloss with the recommended mixing ratio.



# WOODTECH INSIGNIA SPECIAL EFFECTS (EXPERIENCE BY TOUCH)



Soft Touch



Texture



# APPLICATION PROCESS

## Step 1



Sand the surface using Sandpaper No.180. Wipe the surface to clean off the dust particles.



## Step 2



Apply 1-2 Coats of Woodtech Epoxy Insulator or Epoxy Neo to avoid Moisture and oil from the wood substrate.

## Step 3

Apply WoodTech Filler with a putty knife if any dents exist.



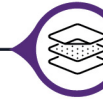
## Step 4



Mix WoodTech Emporio PU Black or White Sealer with a mixing ratio of 2:1. Use a PU thinner to thin the mixture (30-35%)

## Step 5

Apply 2- 3 coats of Sealer. Give an interval of 3-4 hrs in between each coat.



## Step 6

Sand the surface using Sandpaper No. 320 between each coat. Wipe the surface to clean off the dust particles.



## Step 7

Now mix the desired shade of WoodTech Emporio Palette Matt with a mixing ratio of 2:1. Use a PU thinner to thin the mixture (30-35%)



## Step 8

Apply 1-2 coats of the desired shade of Emporio Palette Matt. Give an interval of 3-4 hrs in between each coat.



## Step 9

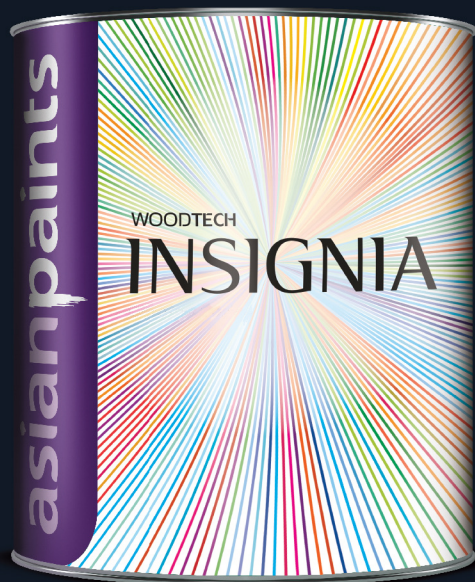
Next, mix WoodTech Insignia Special Effect with the recommended mixing ratio & thin the mixture with PU Thinner.



## Step 10

Apply 1 coat of WoodTech Insignia Special Effect. Ensure material quantity should be uniform & sufficient to get the desired effect.





asianpaints

Marketed by:

Asian Paints Ltd., 6A, Shantinagar, Santacruz (East), Mumbai – 400055

Disclaimer

The shades shown in the book are indicative only. Please refer to Asian Paints Woodtech Spectra for the exact reference.

No part of this material may be used in reproduction or copied in any form by any mean (Graphic, electronic or mechanical, including photocopying, recording, taping or information storage retrieval system) or reproduced in any disc, tape, perforated or other information storage device etc, without written permission of Asian Paints Ltd.

All rights reserved.

Copyright Asian Paints Ltd. All disputes are subject to Mumbai jurisdiction only. This is a free sample, not for sale.