

PRODUCT CODE 6896

Tile Grout - Power Additive

Asian Paints SmartCare Tile Grout Power Additive is a single component polymer modified additive to be mixed with SmartCare Tile Grout Cement Based to enhance the performance properties and durability of the cement tile grout.



PRODUCT BENEFITS

Finish and Gloss

Enhances the finish and gloss of CTG filled in tile joints if applied as a clear coating on it

Water Resistance

Improves water resistance and reduces shrinkage cracks of Cement Tile Grout

Ease of mixing and application

To be mixed easily with Smart Care Cement Based Tile Grout for better performance

Improves Flexibility of CTG

Cement Tile Grout can be filled in tile joints up to 12 mm width after mixing Power Grout with it

Durability in exterior

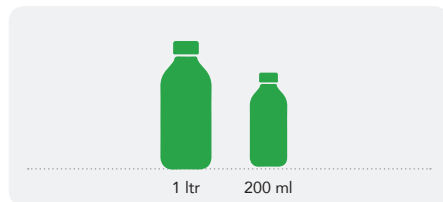
Improves durability of CTG on terraces and exterior walls if mixed as well as over coated

Strength of CTG

Improves bonding and compressive strength of Cement Tile Grout

PRODUCT FEATURES

AVAILABLE PACKS



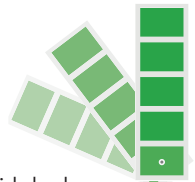
Shelf life: 18 months from the date of manufacture when stored in original packaging under normal dry conditions.

MIXING RATIO

1 kg CTG + 200 ml Power Grout + 100 ml water

COLOURS AVAILABLE

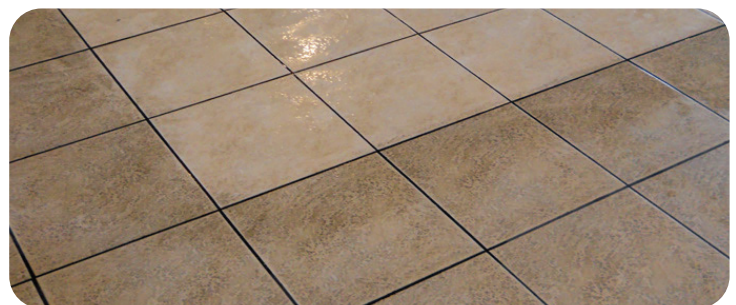
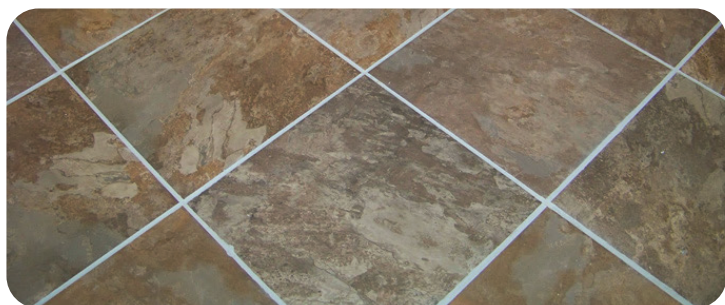
Whitish Liquid



*Available in Whitish Liquid shades

RECOMMENDED USAGE

Type of Usage	Area of Usage	Type of Tiles / Stones	Maximum width of Tile Joint can be filled
To be mixed with cement tile grout	Interior and Exterior floor and wall	Ceramic, porcelain and vitrified tiles, natural stones, granite and marble	12 mm



HOW TO APPLY

APPLICATION PROCESS

APPLICATION PROCEDURE

STEP 1

Tile joints must be clean and free from oil, dust and other loose particles.

STEP 2

Shake the container of Tile Grout Power Additive properly before use.

STEP 3

Add 200 ml Tile Grout Power Additive in approx. 100 ml water and mix properly.

STEP 4

Add Tile Grout powder slowly and mix continuously to get lump free paste.

APPLICATION PROCEDURE

STEP 5

Fill the Grout Paste in tile joints using rubber float within 30 minutes of mixing ensuring that the joints are filled properly.

STEP 6

Remove excessive grout from the tiles gently and allow it to dry for 24 hours.

STEP 7

Apply 1 or 2 coats of undiluted Power Additive on existing Cement Grout to improve its finish and water impermeability.

ADDITIONAL INFORMATION

PRECAUTIONS

- Always mix Tile Grout Power Additive with water and then mix Tile Grout Powder in the mixture.
- Clean all loose particles / dust from the tile joints before filling to ensure proper adhesion of tile grout with tile surface.

SAFETY FEATURES

- Kindly refer to the MSDS for Asian Paints SmartCare Tile Grout Power Additive which gives detailed information on safety measures while handling the material
- Store the bag tightly closed in a cool, dry place
- Keep out of reach of children and away from eatables.
- May be harmful if swallowed. In case of ingestion seek immediate medical attention.
- Wear eye protection during application. In case of contact with eyes, rinse immediately with plenty of water and if required seek medical advice.
- It is recommended to wear suitable nose pad during surface preparation, mixing, application to avoid dust inhalation.

TECHNICAL DETAILS

Pack Sizes	Appearance	Pot Life	Mixing ratio with Cement Tile Grout	Shelf Life	Drying Time
200 ml & 1 litre	Whitish liquid	60 minutes	1 kg CTG + 200 ml power grout + 100 ml water	18 months	24 hours