

PRODUCT CODE 0086

## TruCare Suprema Interior Primer (Water Thinnable)

Asian Paints TruCare Suprema Interior Primer (Water Thinnable) is a water-based wall primer that can be used on interior masonry surfaces.

### PRODUCT BENEFITS

Asian Paints TruCare Suprema Interior Primer (Water Thinnable) is a water-based undercoat and has the following product benefits:

a) A good adhesion for the entire paint system thereby increasing the life of the system

b) Good whiteness, coverage and flow and levelling properties

c) Good sealing properties which ensure a smooth deposition of the paint film

d) Environment friendly, contains no added lead, cadmium, mercury or arsenic



WATER BASED

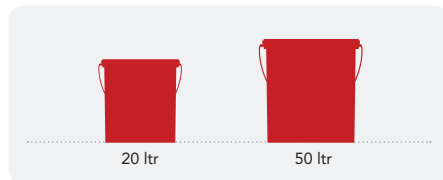
asianpaints

LEAD FREE\* GUARANTEE

\* All Asian Paints products contain no added Lead, Mercury, Arsenic or Chromium from April 2008.

### PRODUCT FEATURES

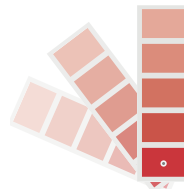
#### AVAILABLE PACKS



Shelf life: 3 years from date of manufacture in original tightly closed containers away from direct sunlight and excessive heat.

#### COLOURS AVAILABLE

## White



Please note: Asian Paints TruCare Suprema Interior Primer (WT) is an undercoat

#### COVERAGE

On smooth masonry surface by brushing

**1 COAT**  
215 - 270 sq.ft/ltr\*\*

\*\*Actual coverage may vary from the quoted coverage due to factors such as method and condition of application and surface roughness and porosity.

#### DRYING TIME TO RECOAT



## 4-6 HOURS

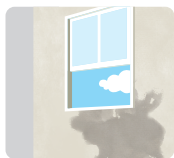
#### RECOMMENDED USAGE



It can be used for priming plastered walls, asbestos, cement, concrete, etc.

### HOW TO APPLY

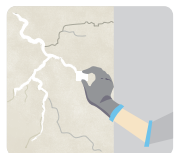
#### PRE PAINTING STEPS



**PLASTER** New masonry surfaces must be allowed to cure completely. It is recommended to allow 28 days as the curing time for new masonry surfaces.



**CLEANING** Ensure that surface is completely free from all dirt, loosely held plaster, powdery residue, oil, grease or any other contamination. Any previous growth of fungus, algae or moss needs to be removed thoroughly by vigorous wire brushing and cleaning with water. One coat of Asian Paints SmartCare BioBlock is recommended to prevent further growth of algae, fungus or moss.



**FILLING FOR CRACKS** For filling cracks upto 3mm use Asian Paints Smart Care Crack Seal.



**FILLING FOR HOLES & DENTS** For dents and holes upto 6mm, use Asian Paints TruCare Super Putty to level the surface.

#### APPLICATION PROCESS

APPLICATION	CODE	THINNER	DILUTION %	APPLICATION VISCOSITY <sup>1</sup>	RECOATING PERIOD
STEP 1 SANDING	SAND THE SURFACE WITH SAND PAPER 180 AND WIPE CLEAN				
STEP 2 TRUCARE SUPREMA INTERIOR PRIMER (WT) FIRST COAT BRUSH	0086	WATER	100%	BRUSH 20 - 22	4 - 6 HRS
STEP 3 SANDING	SAND THE SURFACE WITH SAND PAPER 180 AND WIPE CLEAN				
STEP 4 TRUCARE ACRYLIC WALL PUTTY PUTTY KNIFE	1354	WATER	BASED ON REQUIREMENT	N/A	4 - 6 HRS
STEP 5 SANDING	SAND THE SURFACE WITH SAND PAPER 180 AND WIPE CLEAN				
STEP 6 TRUCARE SUPREMA INTERIOR PRIMER (WT) SECOND COAT BRUSH	0086	WATER	100%	BRUSH 20 - 22	4 - 6 HRS

1. As measured through a Ford cup.  
2. Recoat period is quoted for 25°C and 50% Relative Humidity, these may vary under different conditions.

## ADDITIONAL INFORMATION

### VOC CONTENT



#### LOW VOC CONTENT

Asian Paints TruCare Suprema Interior Primer (Water Thinnable) meets LEED VOC criteria as per Indian Green Building Council Version 1 (Tested at Shriram Institute of Industrial Research)

### TECHNICAL DETAILS

- a. Drying time:** Surface dry time 30 min
- b. Sheen levels:** Matt
- c. Flash point IS101/1987 Part 1, Sec 6:** NA

### PRECAUTIONS

- › Store the product at ambient conditions in well ventilated locations and away from source of ignition and fire.
- › Avoid eye and skin contact. In case of eye and skin contact wash with plenty of clean water.
- › Do not inhale or ingest. In case of inhalation move to fresh air and seek medical attention if symptoms persist in the both the cases.
- › Use protective equipments like rubber or polythene gloves, safety goggles or glasses, face mask while handling the paint.

### SAFETY FEATURES

- › Kindly refer to the MSDS for Asian Paints TruCare Suprema Interior Primer (WT) which gives detailed information on safety measures while handling the paint, which is available on request.
- › Store the container with the lid tightly closed in an upright position, in a cool, dry place.
- › Keep out of reach of children and away from eatables.
- › Do not pour leftover paint down the drain or in water courses.
- › In the event of spills, contain spillage using sand or earth.
- › No added Lead, Mercury or Chromium compounds.