

PRODUCT CODE 1048

SMARTCARE DAMP PROOF FIBER TECH

Asian Paints Causeway SmartCare Damp Proof Fiber Tech is a fiber reinforced elastomeric liquid applied water proofing membrane. It is formulated with select elastomeric and resilient acrylic polymers and reinforcing polyester fibers. Upon curing, it forms a thick, seamless, durable membrane thus offering ultimate waterproofing.



WATER BASED

LEAD FREE GUARANTEE



PRODUCT BENEFITS

Waterproofing

Waterproofing protection of up to 7 bars hydrostatic pressure.

Crack Bridging

Unmatched crack bridging ability due to elastomeric properties.

Mechanical Strength

Reinforced with glass fibers for superior abrasion resistance.

Adhesion

Strong adhesion to masonry substrates.

High Sheen

High sheen, brilliant white colour and thick coat results in high levels of heat reflectance.

Anti Carbonation

Reduces carbon dioxide and chloride ion diffusion thus protecting re-bars against corrosion.

Use & maintenance

Single pack, easy to apply and simple re-coating

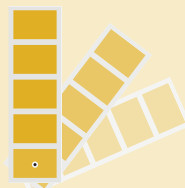
PRODUCT FEATURES

AVAILABLE PACKS



Shelf life : 3 years from date of manufacture in original tightly closed containers away from direct sunlight and excessive heat.

COLOURS AVAILABLE



White*

COVERAGE

On RCC or plaster using brush or roller

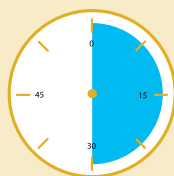


Recommended System
10 sq. ft/ltr on terraces



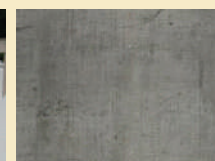
20 - 25 sq. ft/ltr on vertical walls

DRYING TIME TO TOUCH



4-6 HOURS

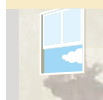
RECOMMENDED USAGE



Can be used for building roofs, terraces, parapet, sunshades and exterior vertical walls. It can also be applied on existing IPS, sound brick-bat coba or cementitious waterproofing.

HOW TO APPLY

PRE PAINTING STEPS



PLASTER New masonry surfaces must be allowed to cure completely. It is recommended to allow 28 days as the curing time for new masonry surface.



CLEANING Surface should be free from any loose paint, dust or grease. Remove all existing bitumen coatings completely. It is recommended to use intense wire brushing or high speed water jet for thorough cleaning.



REPAIRING The substrate must be checked for its soundness using small hammer. All cracks at corner joints, channels and parapets should be properly treated.



FILLING FOR CRACKS For filling cracks upto 3mm use APC Crack Seal. Bigger cracks, damaged portions and hollow areas must be repaired with polymer modified cement mortars.

APPLICATION PROCESS

| APPLICATION | CODE | THINNER | DILUTION % | APPLICATION VISCOSITY | RECOATING PERIOD |
|--|------|---------|------------|-----------------------|------------------|
| HORIZONTAL SURFACE | | | | | |
| STEP 1 SELF PRIMING SMARTCARE DAMP PROOF BRUSH | 1048 | WATER | 33% | N/A | 4 - 6 Hour |
| STEP 1 FIRST COAT WATERPROOFING SMARTCARE DAMP PROOF BRUSH / ROLLER | 1048 | N/A | N/A | N/A | 4 - 6 Hour |
| STEP 3 SECOND COAT WATERPROOFING SMARTCARE DAMP PROOF BRUSH / ROLLER | 1048 | N/A | N/A | N/A | 4 - 6 Hour |
| VERTICAL SURFACE | | | | | |
| STEP 1 SELF PRIMING SMARTCARE DAMP PROOF BRUSH | 1048 | WATER | 33% | N/A | 4 - 6 Hour |
| STEP 2 FAST COAT WATERPROOFING SMARTCARE DAMP PROOF BRUSH / ROLLER | 1048 | N/A | N/A | N/A | 4 - 6 Hour |
| STEP 3 FIRST COAT APEX ULTIMA BRUSH / ROLLER | 1048 | WATER | 40% | N/A | 4 - 6 Hour |
| STEP 4 SECOND COAT APEX ULTIMA BRUSH / ROLLER | 1048 | WATER | 40% | N/A | 4 - 6 Hour |

1. As measured through a Ford cup.

3. For best results, strictly follow the dilution and forced coverage requirements.

2. Apply an additional coat of Damp Proof Fiber Tech in case of severe dampness.

ADDITIONAL INFORMATION

POST PAINTING CARE

For the best performance of the paints, ensure proper washing and cleaning of all algal and fungal growth, If any, at regular intervals of six months.

PRECAUTIONS

- Do not apply during rains or extreme temperatures.
- Avoid abuses which may lead to puncturing of membrane.
- Ensure that the product is applied at least 6 inches inside the drain pipe.
- For best result, apply parapet to parapet to envelope the entire building.

TECHNICAL DETAILS

- Form : Ready to viscous liquid.
- Mix Density : 1.26
- Application temperature : 5°C to 35°C.

SAFETY FEATURES

- Kindly refer to the MSDS for Asian Paints Causeway SmartCare Damp Proof Fiber Tech which gives detailed information on safety measures while handling the paint, which is available on request.
- Store the container with the lid tightly closed in an upright position, in a cool & dry place.
- Keep out of reach of children and away from eatables.
- May be harmful if swallowed. In case of ingestion seek immediate medical attention.
- Wear eye protection during application. In case of contact with eyes, rinse immediately with plenty of water and seek medical advice.
- In case of skin contact immediately wash skin with soap and plenty of water. Get medical attention if irritation develops or persists.
- Do not breathe vapour or spray. It is recommended to wear suitable nose pad during sanding and surface preparation to avoid dust inhalation.
- Do not pour leftover paint down the drain or in water courses.
- In the event of spills, contain spillage using sand or earth.
- No added Lead, Mercury or Chromium compounds.

Causeway Paints Lanka (Pvt)Ltd.

15, Noel Mendis Mawatha, Moderawila Ind. Est, Panadura, Sri Lanka.
 ☎ (94) 038 2240040-5, (94) 038 2240046 📠 (94) 038 2243166-9
 ✉ info.causewaylanka@causewaypaints.com

