

PRODUCT CODE 8626

SmartCare Damp Proof Spark

Asian Paints SmartCare Damp Proof Spark is a waterproofing coating for exterior horizontal surfaces like terraces, chajjas and also a waterproofing basecoat for Asian Paints Exterior Emulsion coatings for vertical walls..

PRODUCT BENEFITS

Water Proofing

Best in class waterproofing of up to 3 bars of positive waterproofing pressure on vertical surfaces and 5 bars of positive waterproofing pressure on horizontal surfaces.

Adhesion

Superior Adhesion on all masonry and cementitious surfaces.

Flexibility

Best in class flexibility with 150% elongation on horizontal surfaces.

Crack Bridging

Superior crack bridging ability (CBA) of up to 0.5mm on horizontal surfaces.

Warranty

3 Years waterproofing warranty.

Application

Single product for both vertical and horizontal application.

Use

Easy to apply.



WATER BASED



**No Added Mercury,
Arsenic & Chromium**

Lead content does not exceed 90 parts per million.

PRODUCT FEATURES

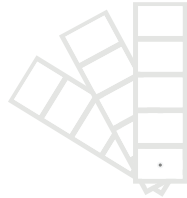
AVAILABLE PACKS



Shelf life: 3 years from date of manufacture in original tightly closed containers away from direct sunlight and excessive heat.

COLOURS AVAILABLE

White



COVERAGE

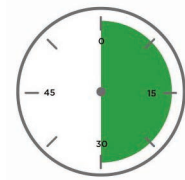


Recommended System
15sq.ft./ltr** on terraces



2 Coats
45sq.ft./ltr** on vertical walls

DRYING TIME TO TOUCH



**4
HOURS**

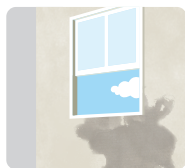
RECOMMENDED USAGE



Can be used on all cementitious and masonry terrace surfaces, existing brick batcoba, over existing acrylic coatings and cementitious boards in terraces and waterproofing basecoat for all vertical walls.

HOW TO APPLY

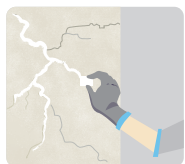
PRE PAINTING STEPS



PLASTER New masonry surfaces must be allowed to cure completely. It is recommended to allow plaster curing time as 28 days for new masonry surfaces.



CLEANING Prepare the surface by cleaning it with a high pressure water jet/wire brush and ensure it is free of dust, oil, greese and loose particles. Check the substrate for its soundness & damaged portions. All hollow areas must be repaired with polymer modified cement-sand mortar.



FILLING FOR CRACKS Small cracks of up to 3 mm width or less should be cleaned & filled with Asian Paints SmartCare Crack Seal.



APPLICATION ON VERTICAL SURFACE/WALL

Apply one self-priming coat of Damp Proof Spark (10% by volume/100ml water to 1 ltr of SmartCare Damp Proof Spark) on the surface with the help of a brush or roller at 8 sqm/ltr consumption. Allow it to dry for minimum 4 hrs followed by one undiluted coat of SmartCare Damp Proof Spark at 8 sqm ltr consumption to achieve overall forced coverage of 4 sqm/ltr. Topcoat this treatment with two coats of any Asian Paints Exterior Emulsion as per recommended application procedure.



APPLICATION ON HORIZONTAL SURFACE/TERRACE

Apply one self-priming coat of Damp Proof Spark (diluted with water in 3:1 ratio by volume) at 5.06 sqm/ltr consumption. Allow it to dry for at least 3-4 hours. Apply two coats without any dilution at 3.4 sqm/ltr consumption for each coat to achieve overall forced coverage of 1.38 sqm.

Ensure that the product is applied on the entire roof including the parapet wall to form a continuous blanket.

ADDITIONAL INFORMATION

PRECAUTIONS

- > Do not apply during rains or when it is expected to rain and ensure that the roof has adequate slope to avoid water logging
- > Please avoid excessive surface abuse like vehicular movements or movement of heave equipment, sharp object etc.

POST PAINTING CARE

For the best performance of the paint, ensure proper washing and cleaning of all algal and fungal growth, if any, at regular intervals of six months.

TECHNICAL DETAILS

- a. Form:** Ready to use viscous liquid
- b. Mix Density:** 1.26
- C. Application Temperature:** 5°C to 35°C

SAFETY FEATURES

- > Kindly refer to the MSDS for Asian Paints Smart Care Damp Proof Spark which gives detailed information on safety measures while handling the paint, which is available on request.
- > Store the container with the lid tightly closed in an upright position, in a cool, dry place.
- > Keep out of reach of children and away from eatables.
- > May be harmful if swallowed. In case of ingestion seek immediate medical attention.
- > Wear eye protection during application. In case of contact with eyes, rinse immediately with plenty of water and seek medical advice.
- > In case of skin contact immediately wash skin with soap and plenty of water. Get medical attention if irritation develops or persists.
- > Do not breathe vapour or spray. It is recommended to wear suitable nose pad during sanding and surface preparation to avoid dust inhalation.
- > Do not pour leftover paint down the drain or in water courses.
- > In the event of spills, contain spillage using sand or earth.
- > No added Lead, Mercury or Chromium compounds.



For enquiries, feedback and complaints, please call toll-free number 16600124680/9802033515 or write to us at weassure@asianpaints.com.np