

# PRISTINE



PRISTINE

**adôr**  
Furnishing by *ôpa* interiorpaints

# PRISTINE

Go classic with PRISTINE - Clean lined woven range, in achromatic hues. Create a natural sense of formality with this palette of fabrics that sit beautifully against the dramatic backdrops.

"Pristine" is our latest offering in the heavy duty upholstery range perfect for year-long elegance and practical luxury.



# INDEX

---

04

How to use the E-Catalogue

05

Layered Fabrics

09

Individual Specifications

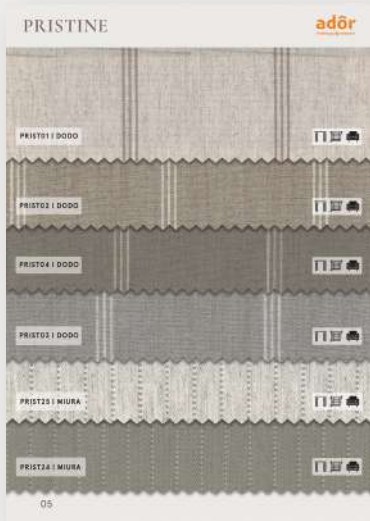
43

Overview



# GUIDE TO USING THIS E-CATALOGUE

This E-Catalogue has built-in links which when clicked will take you to the relevant sections for easy accessibility.



Click on the highlighted sections to go to its Fabric Swatch page for a detailed overview.

Fabric Swatch page  
with detailed overview.



Click on the button below  
to go to its layered page.

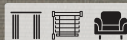
PRIST01 | DODO



PRIST02 | DODO



PRIST04 | DODO



PRIST03 | DODO



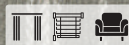
PRIST25 | MIURA



PRIST24 | MIURA



PRIST28 | MURID



PRIST27 | GREBE



PRIST26 | GREBE



PRIST17 | HOATZIN



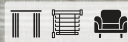
PRIST18 | HOATZIN



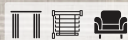
PRIST19 | HOATZIN



PRIST21 | SOGETI



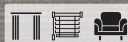
PRIST20 | SOGETI



PRIST22 | SOGETI



PRIST23 | SOGETI



PRIST05 | CECELIA



PRIST06 | CECELIA



PRIST07 | CECELIA



PRIST10 | NARVIK



PRIST11 | NARVIK



PRIST30 | BRIDGET



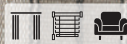
PRIST29 | BRIDGET



PRIST08 | LAVASA



PRIST09 | LAVASA



PRIST31 | GANNET



PRIST32 | GANNET



PRIST33 | GANNET



PRIST34 | MAVIS



PRIST35 | MAVIS



PRIST36 | MOA



PRIST37 | MOA



PRIST12 | WREN



PRIST13 | WREN



PRIST14 | WREN



PRIST42 | AVOCET



PRIST41 | AVOCET



PRIST38 | SKYLARK



PRIST39 | SKYLARK



PRIST40 | SKYLARK





## PRIST01 | DODO



COLLECTION	Pristine
GSM	452
HSN CODE	58013690
WIDTH	142
H. REPEAT	12.8
V. REPEAT	STRIPE
COMPOSITION	94%PL, 6%LI
MARTINDALE	100000
END USE	DRAPERY, BLINDS & UPHOLSTERY



## PRIST02 | DODO



COLLECTION	Pristine
GSM	452
HSN CODE	58013690
WIDTH	142
H. REPEAT	12.8
V. REPEAT	STRIPE
COMPOSITION	94%PL, 6%LI
MARTINDALE	100000
END USE	DRAPERY, BLINDS & UPHOLSTERY



## PRIST04 | DODO



COLLECTION	Pristine
GSM	452
HSN CODE	58013690
WIDTH	142
H. REPEAT	12.8
V. REPEAT	STRIPE
COMPOSITION	94%PL, 6%LI
MARTINDALE	100000
END USE	DRAPERY, BLINDS & UPHOLSTERY



## PRIST03 | DODO



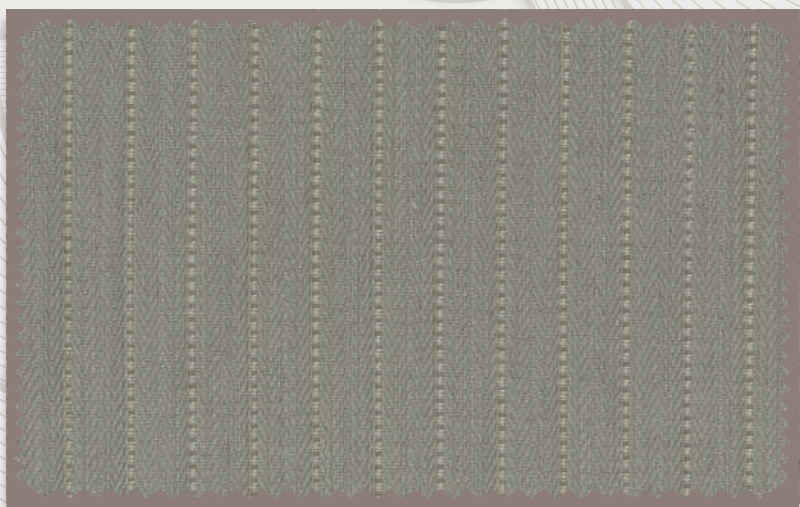
COLLECTION	Pristine
GSM	452
HSN CODE	58013690
WIDTH	142
H. REPEAT	12.8
V. REPEAT	STRIPE
COMPOSITION	94%PL, 6%LI
MARTINDALE	100000
END USE	DRAPERY, BLINDS & UPHOLSTERY



## PRIST25 | MIURA



COLLECTION	Pristine
GSM	470
HSN CODE	54079200
WIDTH	142
H. REPEAT	2
V. REPEAT	STRIPE
COMPOSITION	95%PL, 5%LI
MARTINDALE	100000
END USE	DRAPERY, BLINDS & UPHOLSTERY



## PRIST24 | MIURA



COLLECTION	Pristine
GSM	470
HSN CODE	54079200
WIDTH	142
H. REPEAT	2
V. REPEAT	STRIPE
COMPOSITION	95%v, 5%LI
MARTINDALE	100000
END USE	DRAPERY, BLINDS & UPHOLSTERY



## PRIST28 | MURID



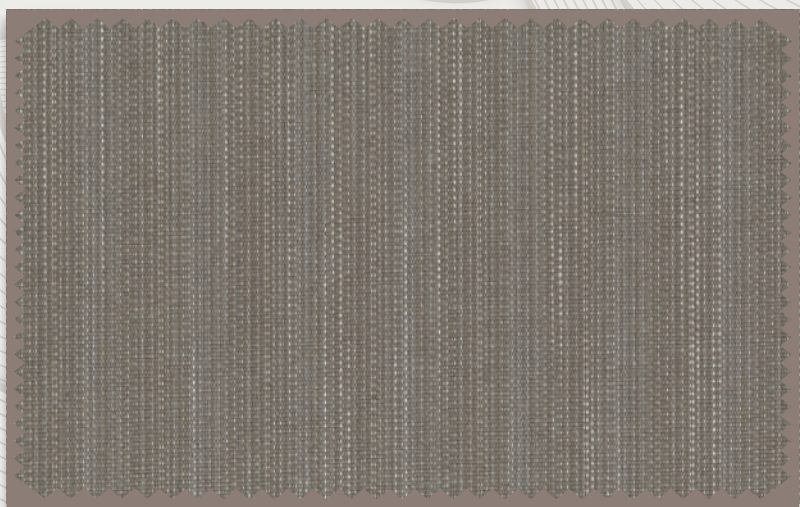
COLLECTION	Pristine
GSM	490
HSN CODE	54079200
WIDTH	142
H. REPEAT	8.4
V. REPEAT	STRIPE
COMPOSITION	95%PL, 5%LI
MARTINDALE	100000
END USE	DRAPERY, BLINDS & UPHOLSTERY



## PRIST27 | GREBE



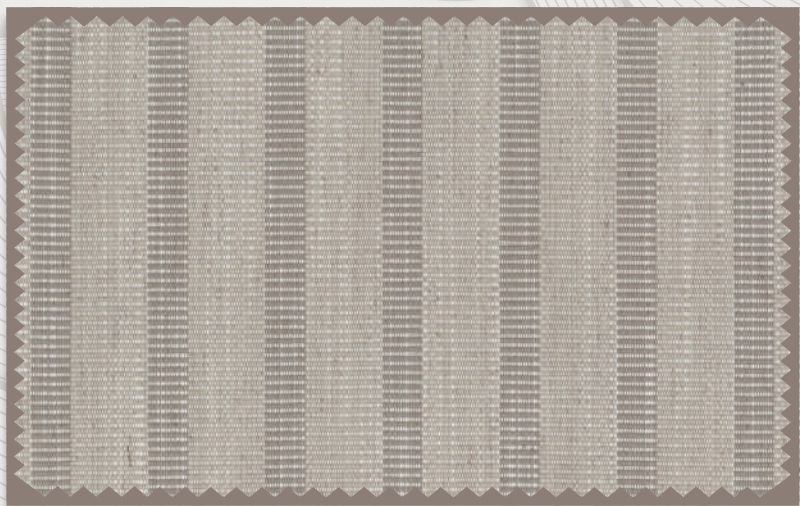
COLLECTION	Pristine
GSM	454
HSN CODE	58013690
WIDTH	141
H. REPEAT	3.6
V. REPEAT	STRIPE
COMPOSITION	94%PL, 6%LI
MARTINDALE	100000
END USE	DRAPERY, BLINDS & UPHOLSTERY



## PRIST26 | GREBE



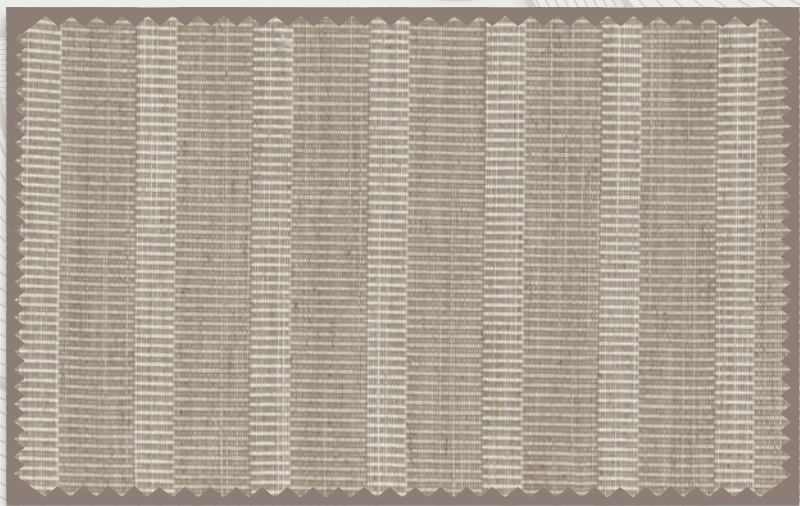
COLLECTION	Pristine
GSM	454
HSN CODE	58013690
WIDTH	141
H. REPEAT	3.6
V. REPEAT	STRIPE
COMPOSITION	94%PL, 6%LI
MARTINDALE	100000
END USE	DRAPERY, BLINDS & UPHOLSTERY



## PRIST17 | HOATZIN



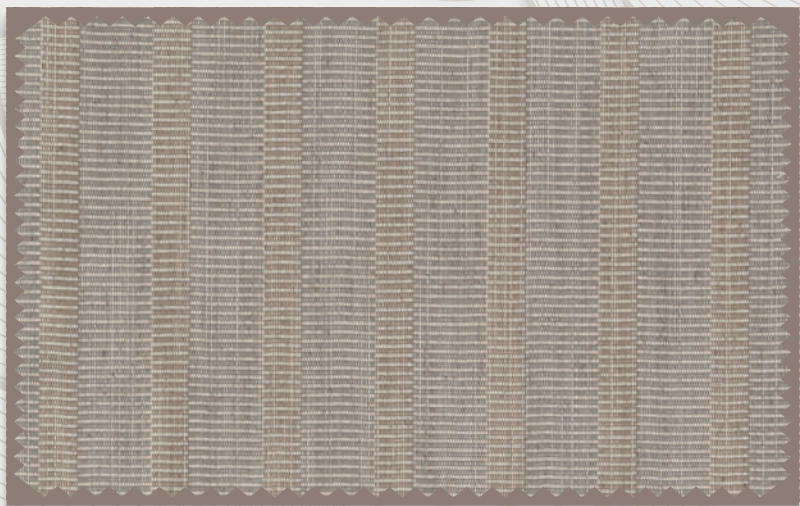
COLLECTION	Pristine
GSM	623
HSN CODE	54079200
WIDTH	142
H. REPEAT	4
V. REPEAT	STRIPE
COMPOSITION	94%PL, 6%LI
MARTINDALE	100000
END USE	DRAPERY, BLINDS & UPHOLSTERY



## PRIST18 | HOATZIN



COLLECTION	Pristine
GSM	623
HSN CODE	54079200
WIDTH	142
H. REPEAT	4
V. REPEAT	STRIPE
COMPOSITION	94%PL, 6%LI
MARTINDALE	100000
END USE	DRAPERY, BLINDS & UPHOLSTERY



## PRIST19 | HOATZIN



COLLECTION	Pristine
GSM	623
HSN CODE	54079200
WIDTH	142
H. REPEAT	4
V. REPEAT	STRIPE
COMPOSITION	94%PL, 6%LI
MARTINDALE	100000
END USE	DRAPERY, BLINDS & UPHOLSTERY



## PRIST21 | SOGETI



COLLECTION	Pristine
GSM	410
HSN CODE	55169200
WIDTH	142
H. REPEAT	STRIPE
V. REPEAT	2.4
COMPOSITION	76%PL, 21%CO, 3%LI
MARTINDALE	100000
END USE	DRAPERY, BLINDS & UPHOLSTERY



## PRIST20 | SOGETI



COLLECTION	Pristine
GSM	410
HSN CODE	55169200
WIDTH	142
H. REPEAT	STRIPE
V. REPEAT	2.4
COMPOSITION	76%PL, 21%CO, 3%LI
MARTINDALE	100000
END USE	DRAPERY, BLINDS & UPHOLSTERY



## PRIST22 | SOGETI



COLLECTION	Pristine
GSM	410
HSN CODE	55169200
WIDTH	142
H. REPEAT	STRIPE
V. REPEAT	2.4
COMPOSITION	76%PL, 21%CO, 3%LI
MARTINDALE	100000
END USE	DRAPERY, BLINDS & UPHOLSTERY



## PRIST23 | SOGETI



COLLECTION	Pristine
GSM	410
HSN CODE	55169200
WIDTH	142
H. REPEAT	STRIPE
V. REPEAT	2.4
COMPOSITION	76%PL, 21%CO, 3%LI
MARTINDALE	100000
END USE	DRAPERY, BLINDS & UPHOLSTERY



## PRIST05 | CECELIA



COLLECTION	Pristine
GSM	390
HSN CODE	55169200
WIDTH	142
H. REPEAT	1
V. REPEAT	STRIPE
COMPOSITION	68%PL, 30%CO, 2%LI
MARTINDALE	60000
END USE	DRAPERY, BLINDS & UPHOLSTERY



## PRIST06 | CECELIA



COLLECTION	Pristine
GSM	390
HSN CODE	55169200
WIDTH	142
H. REPEAT	1
V. REPEAT	STRIPE
COMPOSITION	68%PL, 30%CO, 2%LI
MARTINDALE	60000
END USE	DRAPERY, BLINDS & UPHOLSTERY



## PRIST07 | CECELIA



COLLECTION	Pristine
GSM	390
HSN CODE	55169200
WIDTH	142
H. REPEAT	1
V. REPEAT	STRIPE
COMPOSITION	68%PL, 30%CO, 2%LI
MARTINDALE	60000
END USE	DRAPERY, BLINDS & UPHOLSTERY



## PRIST10 | NARVIK



COLLECTION	Pristine
GSM	490
HSN CODE	54079200
WIDTH	142
H. REPEAT	6.4
V. REPEAT	STRIPE
COMPOSITION	95%PL, 5%LI
MARTINDALE	100000
END USE	DRAPERY, BLINDS & UPHOLSTERY



## PRIST11 | NARVIK



COLLECTION	Pristine
GSM	490
HSN CODE	54079200
WIDTH	142
H. REPEAT	6.4
V. REPEAT	STRIPE
COMPOSITION	95%PL, 5%LI
MARTINDALE	100000
END USE	DRAPERY, BLINDS & UPHOLSTERY



## PRIST30 | BRIDGET



COLLECTION	Pristine
GSM	520
HSN CODE	54079200
WIDTH	141
H. REPEAT	17.6
V. REPEAT	STRIPE
COMPOSITION	94%PL, 6%LI
MARTINDALE	100000
END USE	DRAPERY, BLINDS & UPHOLSTERY



## PRIST29 | BRIDGET



COLLECTION	Pristine
GSM	520
HSN CODE	54079200
WIDTH	141
H. REPEAT	17.6
V. REPEAT	STRIPE
COMPOSITION	94%PL, 6%LI
MARTINDALE	100000
END USE	DRAPERY, BLINDS & UPHOLSTERY



## PRIST08 | LAVASA



COLLECTION	Pristine
GSM	450
HSN CODE	58013690
WIDTH	141
H. REPEAT	5.4
V. REPEAT	STRIPE
COMPOSITION	94%PL, 6%LI
MARTINDALE	100000
END USE	DRAPERY, BLINDS & UPHOLSTERY



## PRIST09 | LAVASA



COLLECTION	Pristine
GSM	450
HSN CODE	58013690
WIDTH	141
H. REPEAT	5.4
V. REPEAT	STRIPE
COMPOSITION	94%PL, 6%LI
MARTINDALE	100000
END USE	DRAPERY, BLINDS & UPHOLSTERY



## PRIST31 | GANNET



COLLECTION	Pristine
GSM	452
HSN CODE	54079200
WIDTH	142
COMPOSITION	95%PL, 5%LI
MARTINDALE	100000
END USE	DRAPERY, BLINDS & UPHOLSTERY



## PRIST32 | GANNET



COLLECTION	Pristine
GSM	452
HSN CODE	54079200
WIDTH	142
COMPOSITION	95%PL, 5%LI
MARTINDALE	100000
END USE	DRAPERY, BLINDS & UPHOLSTERY



## PRIST33 | GANNET



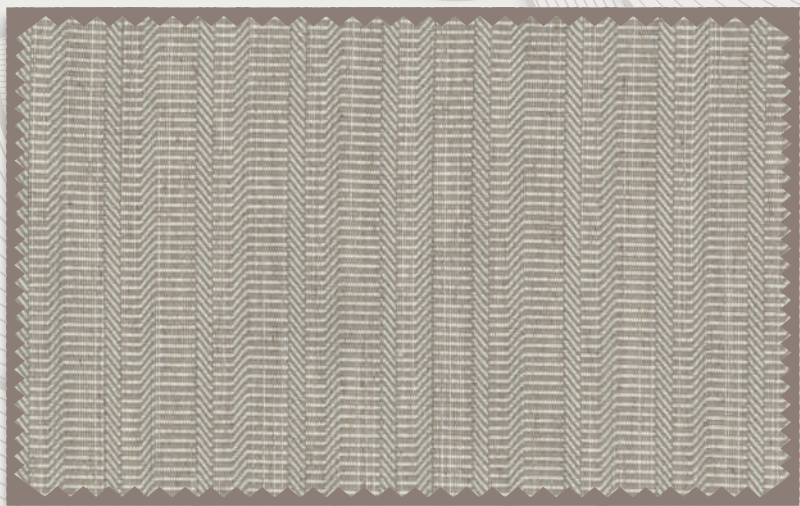
COLLECTION	Pristine
GSM	452
HSN CODE	54079200
WIDTH	142
COMPOSITION	95%PL, 5%LI
MARTINDALE	100000
END USE	DRAPERY, BLINDS & UPHOLSTERY



## PRIST34 | MAVIS



COLLECTION	Pristine
GSM	600
HSN CODE	54079200
WIDTH	142.5
H. REPEAT	3.2
V. REPEAT	STRIPE
COMPOSITION	94%PL, 6%LI
MARTINDALE	100000
END USE	DRAPERY, BLINDS & UPHOLSTERY



## PRIST35 | MAVIS



COLLECTION	Pristine
GSM	600
HSN CODE	54079200
WIDTH	142.5
H. REPEAT	3.2
V. REPEAT	STRIPE
COMPOSITION	94%PL, 6%LI
MARTINDALE	100000
END USE	DRAPERY, BLINDS & UPHOLSTERY



## PRIST36 | MOA



COLLECTION	Pristine
GSM	390
HSN CODE	55169200
WIDTH	142
H. REPEAT	3.3
V. REPEAT	STRIPE
COMPOSITION	68%PL, 30%CO, 2%LI
MARTINDALE	60000
END USE	DRAPERY, BLINDS & UPHOLSTERY



## PRIST37 | MOA



COLLECTION	Pristine
GSM	390
HSN CODE	55169200
WIDTH	142
H. REPEAT	3.3
V. REPEAT	STRIPE
COMPOSITION	68%PL, 30%CO, 2%LI
MARTINDALE	60000
END USE	DRAPERY, BLINDS & UPHOLSTERY



## PRIST12 | WREN



COLLECTION	Pristine
GSM	532
HSN CODE	54079200
WIDTH	142.5
H. REPEAT	3.8
V. REPEAT	STRIPE
COMPOSITION	94%PL, 6%LI
MARTINDALE	100000
END USE	DRAPERY, BLINDS & UPHOLSTERY



## PRIST13 | WREN



COLLECTION	Pristine
GSM	532
HSN CODE	54079200
WIDTH	142.5
H. REPEAT	3.8
V. REPEAT	STRIPE
COMPOSITION	94%PL, 6%LI
MARTINDALE	100000
END USE	DRAPERY, BLINDS & UPHOLSTERY



## PRIST14 | WREN



COLLECTION	Pristine
GSM	532
HSN CODE	54079200
WIDTH	142.5
H. REPEAT	3.8
V. REPEAT	STRIPE
COMPOSITION	94%PL, 6%LI
MARTINDALE	100000
END USE	DRAPERY, BLINDS & UPHOLSTERY



## PRIST42 | AVOCET



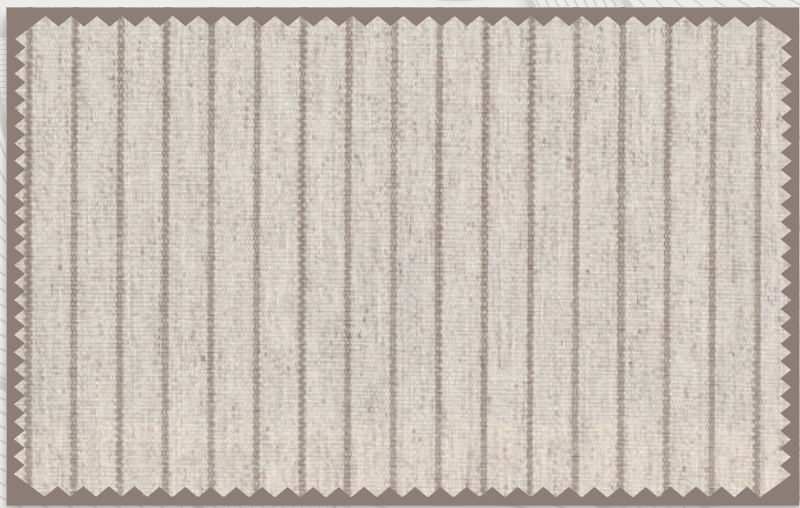
COLLECTION	Pristine
GSM	452
HSN CODE	58013690
WIDTH	142
H. REPEAT	0.5
V. REPEAT	STRIPE
COMPOSITION	94%PL, 6%LI
MARTINDALE	100000
END USE	DRAPERY, BLINDS & UPHOLSTERY



## PRIST41 | AVOCET



COLLECTION	Pristine
GSM	452
HSN CODE	58013690
WIDTH	142
H. REPEAT	0.5
V. REPEAT	STRIPE
COMPOSITION	94%PL, 6%LI
MARTINDALE	100000
END USE	DRAPERY, BLINDS & UPHOLSTERY



## PRIST38 | SKYLARK



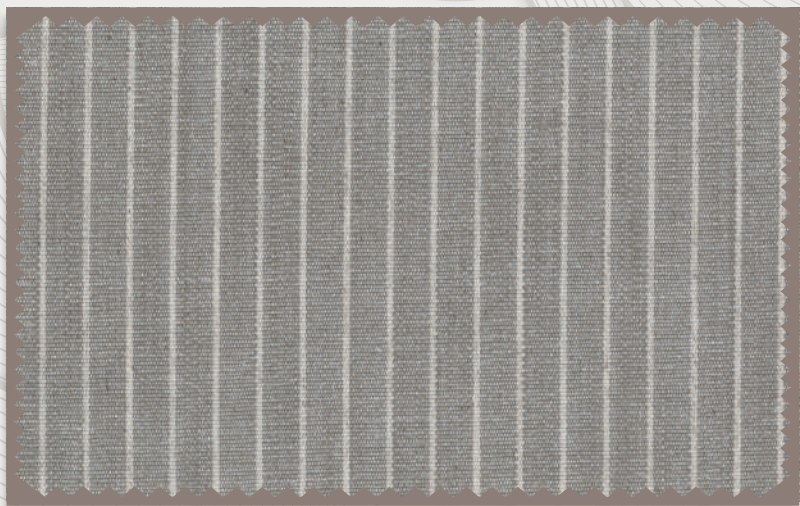
COLLECTION	Pristine
GSM	420
HSN CODE	58013690
WIDTH	142
H. REPEAT	1.5
V. REPEAT	STRIPE
COMPOSITION	94%PL, 6%LI
MARTINDALE	100000
END USE	DRAPERY, BLINDS & UPHOLSTERY



## PRIST39 | SKYLARK



COLLECTION	Pristine
GSM	420
HSN CODE	58013690
WIDTH	142
H. REPEAT	1.5
V. REPEAT	STRIPE
COMPOSITION	94%PL, 6%LI
MARTINDALE	100000
END USE	DRAPERY, BLINDS & UPHOLSTERY



## PRIST40 | SKYLARK



COLLECTION	Pristine
GSM	420
HSN CODE	58013690
WIDTH	142
H. REPEAT	1.5
V. REPEAT	STRIPE
COMPOSITION	94%PL, 6%LI
MARTINDALE	100000
END USE	DRAPERY, BLINDS & UPHOLSTERY

# PRISTINE

DESIGN	DODO	MIURA	MURID
WIDTH	142	142	142
COMPOSITION	94%PL 6%LI	95%PL 5%LI	94%PL 6%LI
HSN CODE	58013690	54079200	54079200
GSM	452	470	490
HORIZONTAL REPEAT	12.8	2	8.4
VERTICAL REPEAT	STRIPE	STRIPE	STRIPE
MARTINDALE	100000	100000	100000
WASH CARE			
END USE			

## WASH CARE

M/C Wash at 40°	Do not Bleach	Do not Tumble Dry	Hang Dry	Dry Clean	Iron upto 2 Dots	Steam Iron	Do not Iron	Vacuum Clean

## END USE

Cushion	Drapery	Blinds	Upholstery	Light Upholstery

# PRISTINE

DESIGN	GREBE	HOATZIN	SOGETI
WIDTH	141	142	142
COMPOSITION	94%PL 6%LI	94%PL 6%LI	76%PL 21%CO 3%LI
HSN CODE	58013690	54079200	55169200
GSM	454	623	410
HORIZONTAL REPEAT	3.6	4	STRIPE
VERTICAL REPEAT	STRIPE	STRIPE	2.4
MARTINDALE	100000	100000	100000
WASH CARE			
END USE			

## WASH CARE

M/C Wash at 40°	Do not Bleach	Do not Tumble Dry	Hang Dry	Dry Clean	Iron upto 2 Dots	Steam Iron	Do Not Iron	Vaccum Clean

## END USE

Cushion	Drapery	Blinds	Upholstery	Light Upholstery

# PRISTINE

DESIGN	CECELIA	NARVIK	BRIDGET
WIDTH	142	142	141
COMPOSITION	68%PL 30%CO 2%LI	95%PL 5%LI	94%PL 6%LI
HSN CODE	55169200	54079200	54079200
GSM	390	490	520
HORIZONTAL REPEAT	1	6.4	17.6
VERTICAL REPEAT	STRIPE	STRIPE	STRIPE
MARTINDALE	60000	100000	100000
WASH CARE			
END USE			

## WASH CARE

M/C Wash at 40'	Do not Bleach	Do not Tumble Dry	Hang Dry	Dry Clean	Iron upto 2 Dots	Steam Iron	Do Not Iron	Vacuum Clean

## END USE

Cushion	Drapery	Blinds	Upholstery	Light Upholstery

# PRISTINE

DESIGN	LAVASA	GANNET	MAVIS
WIDTH	141	142	142.5
COMPOSITION	94%PL 6%LI	95%PL 5%LI	94%PL 6%LI
HSN CODE	58013690	54079200	54079200
GSM	450	452	600
HORIZONTAL REPEAT	5.4	N/A	3.2
VERTICAL REPEAT	STRIPE	N/A	STRIPE
MARTINDALE	100000	100000	100000
WASH CARE			
END USE			

## WASH CARE

M/C Wash at 40*	Do not Bleach	Do not Tumble Dry	Hang Dry	Dry Clean	Iron upto 2 Dots	Steam Iron	Do Not Iron	Vaccum Clean

## END USE

Cushion	Drapery	Blinds	Upholstery	Light Upholstery

# PRISTINE

DESIGN	MOA	WREN	AVOCET
WIDTH	142	142.5	142
COMPOSITION	68%PL 30%CO 2%LI	94%PL 6%LI	94%PL 6%LI
HSN CODE	55169200	54079200	58013690
GSM	390	532	452
HORIZONTAL REPEAT	3.3	3.8	0.5
VERTICAL REPEAT	STRIPE	STRIPE	STRIPE
MARTINDALE	60000	100000	100000
WASH CARE			
END USE			



## WASH CARE

M/C Wash at 40°	Do not Bleach	Do not Tumble Dry	Hang Dry	Dry Clean	Iron upto 2 Dots	Steam Iron	Do Not Iron	Vacuum Clean










## END USE

Cushion	Drapery	Blinds	Upholstery	Light Upholstery






# PRISTINE

DESIGN	SKYLARK
WIDTH	142
COMPOSITION	94%PL 6%LI
HSN CODE	58013690
GSM	420
HORIZONTAL REPEAT	1.5
VERTICAL REPEAT	STRIPE
MARTINDALE	100000
WASH CARE	
END USE	

## WASH CARE

								
M/C Wash at 40°	Do not Bleach	Do not Tumble Dry	Hang Dry	Dry Clean	Iron upto 2 Dots	Steam Iron	Do Not Iron	Vacuum Clean

## END USE

				
Cushion	Drapery	Blinds	Upholstery	Light Upholstery