

# Naturalia



# Naturalia

A collective space to gather, co-create and find your own restive vibe, 'Naturalia' inspires a bohemian respite to your home space.

This is a thoughtfully put together, breezy mix of natural cottons and sheers, stylized with delicate embroidered palms, floral motifs and geometric patterns. In rich tones of ivory and whites, bring home the zest of nature and create an all-natural haven.

# Naturalia | Collection Overview

**adôr**  
furnishing by  asianpaints

**IXIA | NATUR39**



**IXIA | NATUR40**



**HEATHER | NATUR14**



**HEATHER | NATUR13**



**LATICA | NATUR05**



**LATICA | NATUR06**



**KATY | NATUR47**



# Naturalia | Collection Overview

**adôr**  
furnishing by  asianpaints

**KATY | NATUR48**



**FREESIA | NATUR09**



**FREESIA | NATUR10**



**FREESIA | NATUR08**



**ARBOR | NATUR43**



**ARBOR | NATUR44**




**IONE | NATUR17**




# Naturalia | Collection Overview


**adôr**  
furnishing by  asianpaints



IONE | NATUR18



HYACINTH | NATUR22




HYACINTH | NATUR21



LEILANI | NATUR07



ZINNIA | NATUR38



GINGER | NATUR25



NANALA | NATUR03



# Naturalia | Collection Overview

**adôr**

furnishing by  asianpaints

**NANALA | NATUR04**



**OLEARIA | NATUR01**



**OLEARIA | NATUR02**



**KAHILI | NATUR26**



**KAHILI | NATUR27**



**CALIX | NATUR28**



**BLAZE | NATUR35**



# Naturalia | Collection Overview

**adôr**

furnishing by Asian Paints

AZAMI | NATUR33



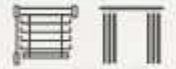
JAZZ | NATUR37



BRIAR | NATUR31



CALIX | NATUR29



BLAZE | NATUR34



AZAMI | NATUR33



JAZZ | NATUR36



# Naturalia | Collection Overview

**adôr**  
furnishing by  asianpaints

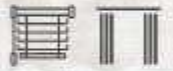
**BRIAR | NATUR30**



**HOLLY | NATUR19**



**HOLLY | NATUR20**



**WISTERIA | NATUR45**



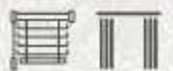
**WISTERIA | NATUR46**



**LILAC | NATUR23**



**LILAC | NATUR24**




# Naturalia | Collection Overview


**adôr**  
furnishing by  asianpaints




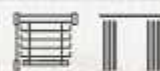
NATALIA | NATUR49




NATALIA | NATUR50




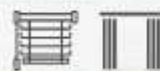
MAGNOLIA | NATUR11




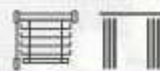
MAGNOLIA | NATUR12



KALINA | NATUR41



KALINA | NATUR42




ARBOR | NATUR43



# Naturalia | Collection Overview


**adôr**  
furnishing by  asianpaints



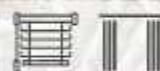
JACINTHA | NATUR16



LATIL | NATUR51



LATIL | NATUR52





## IXIA | NATUR39

<b>Customer Design</b>	<b>IXIA</b>
<b>SKU No</b>	<b>NATUR39</b>
<b>F WIDTH</b>	<b>145</b>
<b>U WIDTH</b>	<b>137.5</b>
<b>V REPEAT CM</b>	<b>23.5</b>
<b>H. REPEAT CM</b>	<b>17.1</b>
<b>OVER ALL GSM</b>	<b>420</b>
<b>OVER ALL COMPOSITION</b>	<b>65% POLYESTER, 19% LINEN, 16% COTTON</b>
<b>BASE MARTINDALE</b>	<b>-</b>
<b>WASH CARE</b>	<b>ONLY DRY CLEAN, IRON 2 DOTS, DON'T BLEACH, DON'T TUMBLE, HANG DRY</b>
<b>END USE</b>	<b>DRAPERY, BLINDS &amp; LT UPHOLSTERY</b>



## IXIA | NATUR40

<b>Customer Design</b>	<b>IXIA</b>
<b>SKU No</b>	<b>NATUR40</b>
<b>F WIDTH</b>	<b>145</b>
<b>U WIDTH</b>	<b>137.5</b>
<b>V REPEAT CM</b>	<b>23.5</b>
<b>H. REPEAT CM</b>	<b>17.1</b>
<b>OVER ALL GSM</b>	<b>420</b>
<b>OVER ALL COMPOSITION</b>	<b>65% POLYESTER, 19% LINEN, 16% COTTON</b>
<b>BASE MARTINDALE</b>	<b>-</b>
<b>WASH CARE</b>	<b>ONLY DRY CLEAN, IRON 2 DOTS, DON'T BLEACH, DON'T TUMBLE, HANG DRY</b>
<b>END USE</b>	<b>DRAPERY, BLINDS &amp; LT UPHOLSTERY</b>



## HEATHER | NATUR14

Customer Design	HEATHER
SKU No	NATUR14
F WIDTH	145
U WIDTH	134
V REPEAT CM	12
H. REPEAT CM	12
OVER ALL GSM	385
OVER ALL COMPOSITION	66% POLY, 19% LINEN, 15% COTTON
BASE MARTINDALE	-
WASH CARE	ONLY DRY CLEAN, IRON 2 DOTS, DON'T BLEACH, DON'T TUMBLE, HANG DRY
END USE	DRAPERY, BLINDS & LT UPHOLSTERY



## HEATHER | NATUR13

Customer Design	HEATHER
SKU No	NATUR13
F WIDTH	145
U WIDTH	134
V REPEAT CM	12
H. REPEAT CM	12
OVER ALL GSM	385
OVER ALL COMPOSITION	66% POLY, 19% LINEN, 15% COTTON
BASE MARTINDALE	-
WASH CARE	ONLY DRY CLEAN, IRON 2 DOTS, DON'T BLEACH, DON'T TUMBLE, HANG DRY
END USE	DRAPERY, BLINDS & LT UPHOLSTERY





## LATICA | NATUR05

### Customer Design

SKU No

F WIDTH

U WIDTH

V REPEAT CM

H. REPEAT CM

OVER ALL GSM

OVER ALL COMPOSITION

BASE MARTINDALE

WASH CARE

LATICA

NATUR05

144.5

138.5

23.2

45.7

340

62% PL, 18% LI, 12% CO, 8% VI

-

30°C M/C WASH GENTLE CYCLE, IRONING-2 DOT, DRY-HANG DRY,  
TUMBLE DRY- DON'T, BLEACH- DON'T, DRY CLEAN-CAN DRY CLEAN

END USE

DRAPERY, BLINDS & LT UPHOLSTERY



## LATICA | NATUR06

### Customer Design

SKU No

F WIDTH

U WIDTH

V REPEAT CM

H. REPEAT CM

OVER ALL GSM

OVER ALL COMPOSITION

BASE MARTINDALE

WASH CARE

LATICA

NATUR06

144.5

138.5

23.2

45.7

340

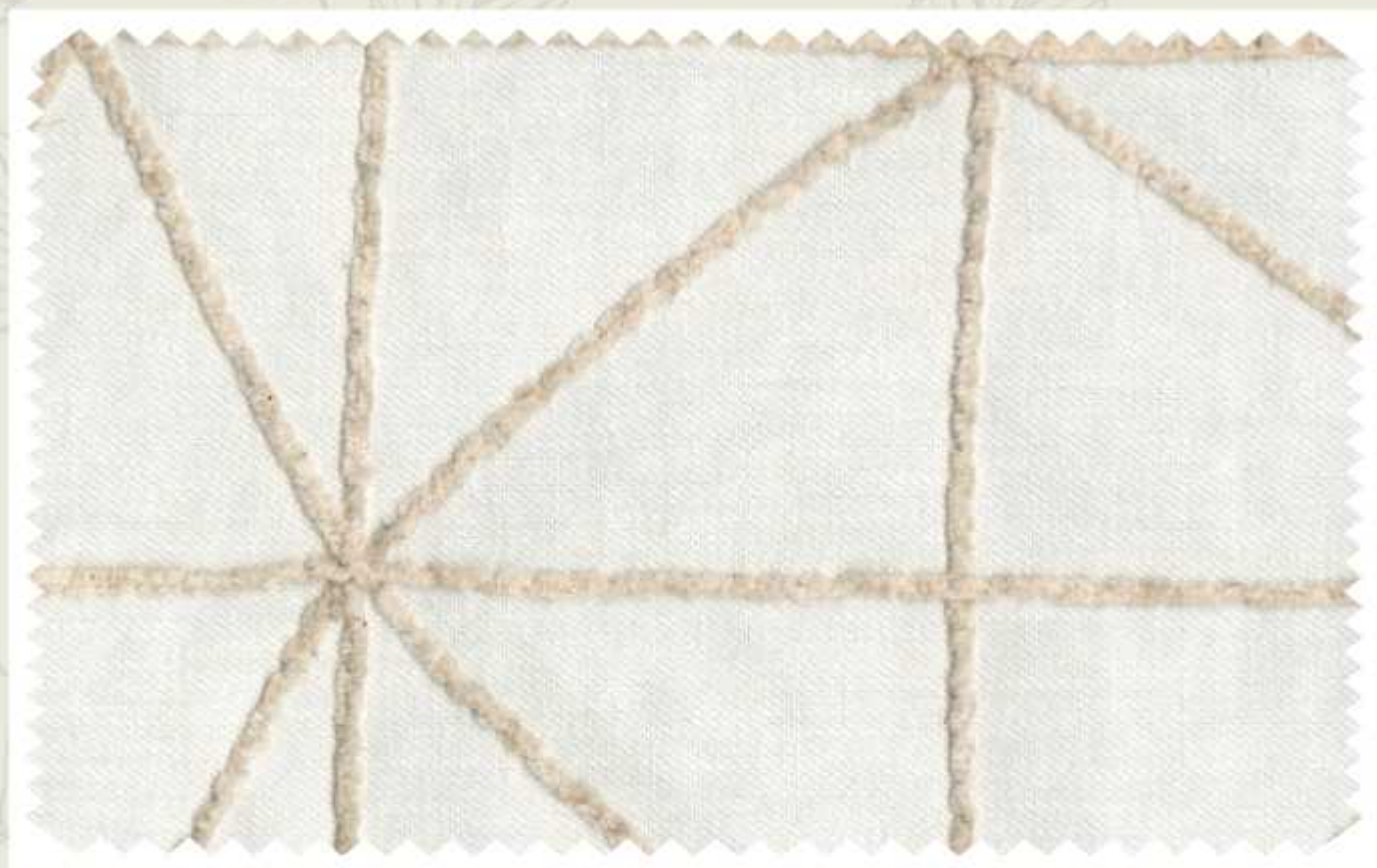
62% PL, 18% LI, 12% CO, 8% VI

-

30°C M/C WASH GENTLE CYCLE, IRONING-2 DOT, DRY-HANG DRY,  
TUMBLE DRY- DON'T, BLEACH- DON'T, DRY CLEAN-CAN DRY CLEAN

END USE

DRAPERY, BLINDS & LT UPHOLSTERY



## KATY | NATUR47

### Customer Design

SKU No

F WIDTH

U WIDTH

V REPEAT CM

H. REPEAT CM

OVER ALL GSM

OVER ALL COMPOSITION

BASE MARTINDALE

WASH CARE

KATY

NATUR47

145

140

32

26.7

296

67% POLYESTER, 20% LINEN, 13% COTTON

-

ONLY DRY CLEAN, IRON 2 DOTS, DON'T BLEACH,  
DON'T TUMBLE, HANG DRY

END USE

DRAPERY, BLINDS & LT UPHOLSTERY



## KATY | NATUR48

### Customer Design

SKU No

F WIDTH

U WIDTH

V REPEAT CM

H. REPEAT CM

OVER ALL GSM

OVER ALL COMPOSITION

BASE MARTINDALE

WASH CARE

KATY

NATUR48

145

140

32

26.7

296

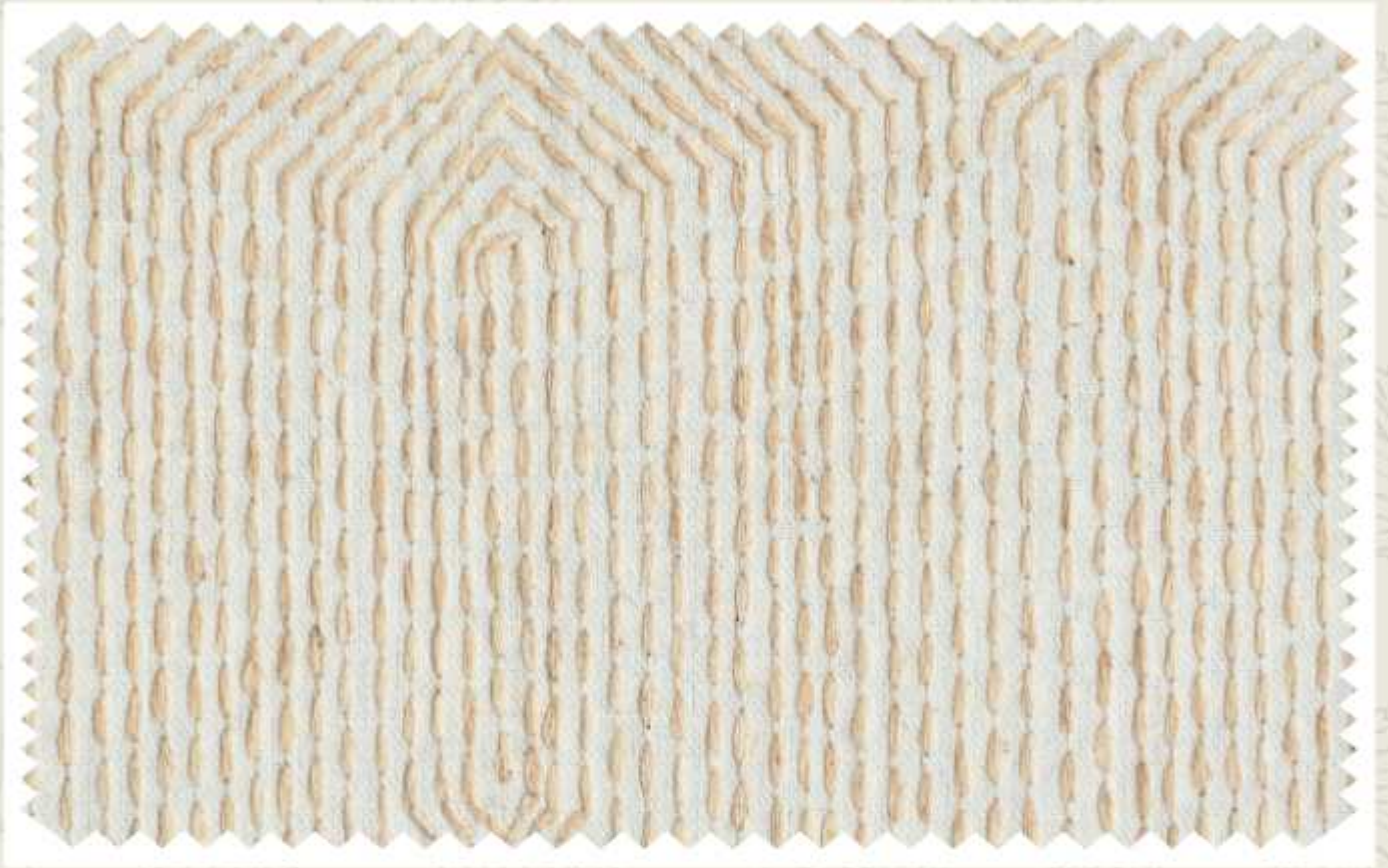
67% POLYESTER, 20% LINEN, 13% COTTON

-

ONLY DRY CLEAN, IRON 2 DOTS, DON'T BLEACH,  
DON'T TUMBLE, HANG DRY

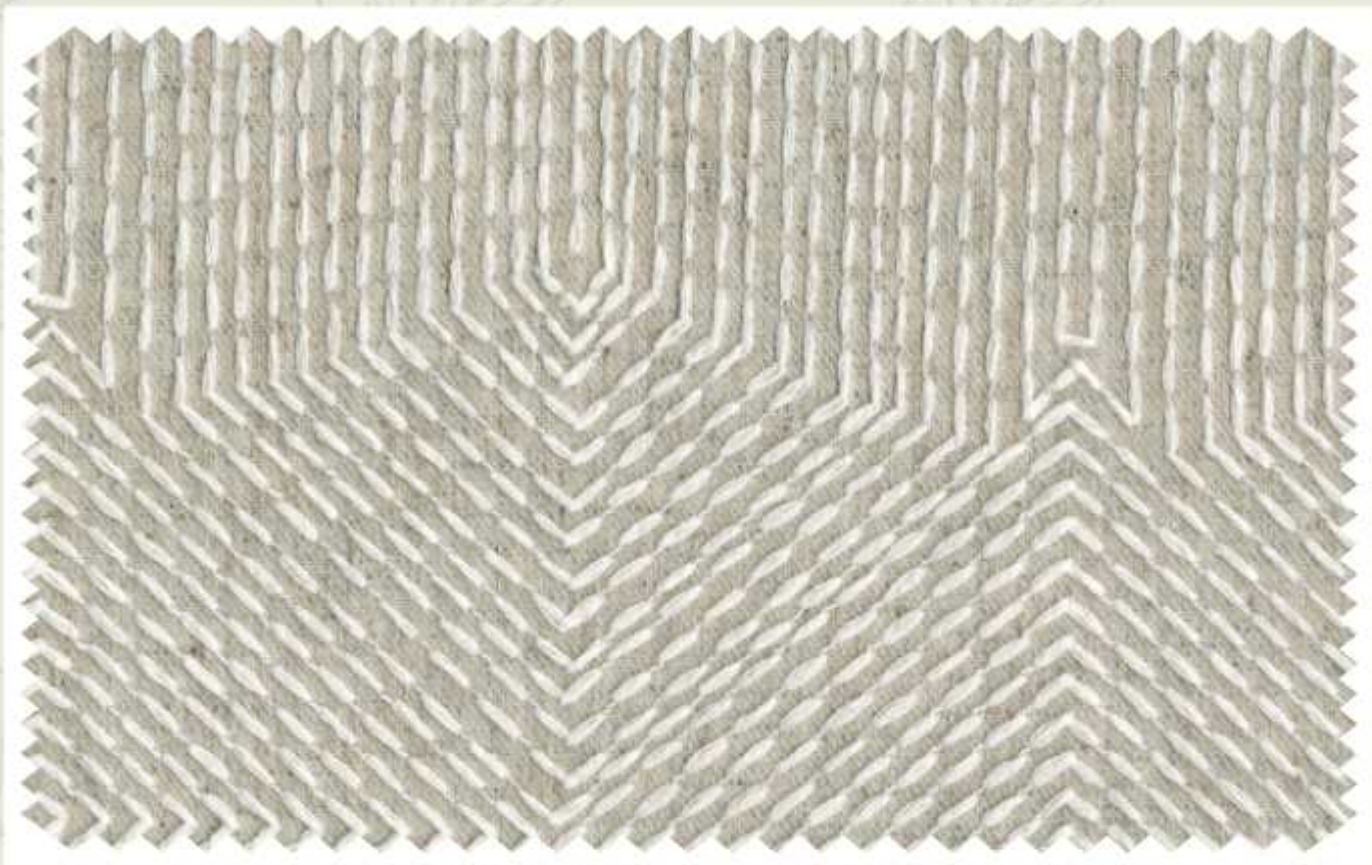
END USE

DRAPERY, BLINDS & LT UPHOLSTERY



## FREESIA | NATUR09

<b>Customer Design</b>	<b>FREESIA</b>
<b>SKU No</b>	<b>NATUR09</b>
<b>F WIDTH</b>	<b>145</b>
<b>U WIDTH</b>	<b>138</b>
<b>V REPEAT CM</b>	<b>23.3</b>
<b>H. REPEAT CM</b>	<b>13.7</b>
<b>OVER ALL GSM</b>	<b>360</b>
<b>OVER ALL COMPOSITION</b>	<b>65% POLYESTER, 20% LINEN, 15% COTTON</b>
<b>BASE MARTINDALE</b>	<b>-</b>
<b>WASH CARE</b>	<b>ONLY DRY CLEAN, IRON 2 DOTS, DON'T BLEACH, DON'T TUMBLE, HANG DRY</b>
<b>END USE</b>	<b>DRAPERY, BLINDS &amp; LT UPHOLSTERY</b>



## FREESIA | NATUR10

### Customer Design

SKU No

F WIDTH

U WIDTH

V REPEAT CM

H. REPEAT CM

OVER ALL GSM

OVER ALL COMPOSITION

BASE MARTINDALE

WASH CARE

FREESIA

NATUR10

145

138

23.3

13.7

360

65% POLYESTER, 20% LINEN, 15% COTTON

-

ONLY DRY CLEAN, IRON 2 DOTS, DON'T BLEACH,  
DON'T TUMBLE, HANG DRY

END USE

DRAPERY, BLINDS & LT UPHOLSTERY



## FREESIA | NATUR08

<b>Customer Design</b>	<b>FREESIA</b>
<b>SKU No</b>	<b>NATUR08</b>
<b>F WIDTH</b>	<b>145</b>
<b>U WIDTH</b>	<b>138</b>
<b>V REPEAT CM</b>	<b>23.3</b>
<b>H. REPEAT CM</b>	<b>13.7</b>
<b>OVER ALL GSM</b>	<b>360</b>
<b>OVER ALL COMPOSITION</b>	<b>65% POLYESTER, 20% LINEN, 15% COTTON</b>
<b>BASE MARTINDALE</b>	<b>-</b>
<b>WASH CARE</b>	<b>ONLY DRY CLEAN, IRON 2 DOTS, DON'T BLEACH, DON'T TUMBLE, HANG DRY</b>
<b>END USE</b>	<b>DRAPERY, BLINDS &amp; LT UPHOLSTERY</b>



## ARBOR | NATUR43

Customer Design	ARBOR
SKU No	NATUR43
F WIDTH	145.5
U WIDTH	138
V REPEAT CM	8
H. REPEAT CM	8.5
OVER ALL GSM	480
OVER ALL COMPOSITION	65% POLYESTER, 18% LINEN, 17% COTTON
BASE MARTINDALE	-
WASH CARE	ONLY DRY CLEAN, IRON 2 DOTS, DON'T BLEACH, DON'T TUMBLE, HANG DRY
END USE	DRAPERY, BLINDS & LT UPHOLSTERY



## ARBOR | NATUR44

Customer Design	ARBOR
SKU No	NATUR44
F WIDTH	145.5
U WIDTH	138
V REPEAT CM	8
H. REPEAT CM	8.5
OVER ALL GSM	480
OVER ALL COMPOSITION	65% POLYESTER, 18% LINEN, 17% COTTON
BASE MARTINDALE	-
WASH CARE	ONLY DRY CLEAN, IRON 2 DOTS, DON'T BLEACH, DON'T TUMBLE, HANG DRY
END USE	DRAPERY, BLINDS & LT UPHOLSTERY



## IONE | NATUR17

### Customer Design

SKU No

IONE

NATUR17

F WIDTH

145.5

U WIDTH

138

V REPEAT CM

16

H. REPEAT CM

23

OVER ALL GSM

360

OVER ALL COMPOSITION

65% POLYESTER, 20% LINEN, 15% COTTON

BASE MARTINDALE

-

WASH CARE

30°C M/C WASH GENTLE CYCLE, IRONING-2 DOT, DRY-HANG DRY,  
TUMBLE DRY- DON'T, BLEACH- DON'T, DRY CLEAN-CAN DRY CLEAN

END USE

DRAPERY, BLINDS & LT UPHOLSTERY



## IONE | NATUR18

<b>Customer Design</b>	<b>IONE</b>
<b>SKU No</b>	<b>NATUR18</b>
<b>F WIDTH</b>	<b>145.5</b>
<b>U WIDTH</b>	<b>138</b>
<b>V REPEAT CM</b>	<b>16</b>
<b>H. REPEAT CM</b>	<b>23</b>
<b>OVER ALL GSM</b>	<b>360</b>
<b>OVER ALL COMPOSITION</b>	<b>65% POLYESTER, 20% LINEN, 15% COTTON</b>
<b>BASE MARTINDALE</b>	<b>-</b>
<b>WASH CARE</b>	<b>30°C M/C WASH GENTLE CYCLE, IRONING-2 DOT, DRY-HANG DRY, TUMBLE DRY- DON'T, BLEACH- DON'T, DRY CLEAN-CAN DRY CLEAN</b>
<b>END USE</b>	<b>DRAPERY, BLINDS &amp; LT UPHOLSTERY</b>



## HYACINTH | NATUR22

### Customer Design

SKU No

F WIDTH

U WIDTH

V REPEAT CM

H. REPEAT CM

OVER ALL GSM

OVER ALL COMPOSITION

BASE MARTINDALE

WASH CARE

HYACINTH

NATUR22

145

141

7.8

15.7

358

66% POLYESTER, 19% LINEN, 15% COTTON

-

30°C M/C WASH GENTLE CYCLE, IRONING-2 DOT, DRY-HANG DRY,  
TUMBLE DRY- DON'T, BLEACH- DON'T, DRY CLEAN-CAN DRY CLEAN

END USE

DRAPERY, BLINDS & LT UPHOLSTERY



## HYACINTH | NATUR21

<b>Customer Design</b>	<b>HYACINTH</b>
<b>SKU No</b>	<b>NATUR21</b>
<b>F WIDTH</b>	<b>145</b>
<b>U WIDTH</b>	<b>141</b>
<b>V REPEAT CM</b>	<b>7.8</b>
<b>H. REPEAT CM</b>	<b>15.7</b>
<b>OVER ALL GSM</b>	<b>358</b>
<b>OVER ALL COMPOSITION</b>	<b>66% POLYESTER, 19% LINEN, 15% COTTON</b>
<b>BASE MARTINDALE</b>	<b>-</b>
<b>WASH CARE</b>	<b>30°C M/C WASH GENTLE CYCLE, IRONING-2 DOT, DRY-HANG DRY, TUMBLE DRY- DON'T, BLEACH- DON'T, DRY CLEAN-CAN DRY CLEAN</b>
<b>END USE</b>	<b>DRAPERY, BLINDS &amp; LT UPHOLSTERY</b>



## LEILANI | NATUR07

### Customer Design

SKU No

F WIDTH

U WIDTH

V REPEAT CM

H. REPEAT CM

OVER ALL GSM

OVER ALL COMPOSITION

BASE MARTINDALE

WASH CARE

LEILANI

NATUR07

145

137

24

23

340

66% POLYESTER, 20% LINEN, 14% COTTON

-

30°C M/C WASH GENTLE CYCLE, IRONING-2 DOT, DRY-HANG DRY,  
TUMBLE DRY- DON'T, BLEACH- DON'T, DRY CLEAN-CAN DRY CLEAN

END USE

DRAPERY, BLINDS & LT UPHOLSTERY



## ZINNIA | NATUR38

<b>Customer Design</b>	<b>ZINNIA</b>
<b>SKU No</b>	<b>NATUR38</b>
<b>F WIDTH</b>	<b>144.5</b>
<b>U WIDTH</b>	<b>137</b>
<b>V REPEAT CM</b>	<b>3.4</b>
<b>H. REPEAT CM</b>	<b>6.8</b>
<b>OVER ALL GSM</b>	<b>432</b>
<b>OVER ALL COMPOSITION</b>	<b>65% POLYESTER, 19% LINEN, 16% COTTON</b>
<b>BASE MARTINDALE</b>	<b>-</b>
<b>WASH CARE</b>	<b>ONLY DRY CLEAN, IRON 2 DOTS, DON'T BLEACH, DON'T TUMBLE, HANG DRY</b>
<b>END USE</b>	<b>DRAPERY, BLINDS &amp; LT UPHOLSTERY</b>



## GINGER | NATUR25

### Customer Design

SKU No

F WIDTH

U WIDTH

V REPEAT CM

H. REPEAT CM

OVER ALL GSM

OVER ALL COMPOSITION

BASE MARTINDALE

WASH CARE

GINGER

NATUR25

144.5

137

3.4

6.8

432

65% POLYESTER, 19% LINEN, 16% COTTON

-

ONLY DRY CLEAN, IRON 2 DOTS, DON'T BLEACH,  
DON'T TUMBLE, HANG DRY

END USE

DRAPERY, BLINDS & LT UPHOLSTERY



## NANALA | NATUR03

<b>Customer Design</b>	<b>NANALA</b>
<b>SKU No</b>	<b>NATUR03</b>
<b>F WIDTH</b>	<b>145</b>
<b>U WIDTH</b>	<b>138</b>
<b>V REPEAT CM</b>	<b>5.2</b>
<b>H. REPEAT CM</b>	<b>12.8</b>
<b>OVER ALL GSM</b>	<b>384</b>
<b>OVER ALL COMPOSITION</b>	<b>66% POLYESTER, 19% LINEN, 15% COTTON</b>
<b>BASE MARTINDALE</b>	<b>-</b>
<b>WASH CARE</b>	<b>ONLY DRY CLEAN, IRON 2 DOTS, DON'T BLEACH, DON'T TUMBLE, HANG DRY</b>
<b>END USE</b>	<b>DRAPERY, BLINDS &amp; LT UPHOLSTERY</b>



## NANALA | NATUR04

### Customer Design

SKU No

F WIDTH

U WIDTH

V REPEAT CM

H. REPEAT CM

OVER ALL GSM

OVER ALL COMPOSITION

BASE MARTINDALE

WASH CARE

NANALA

NATUR04

145

138

5.2

12.8

384

66% POLYESTER, 19% LINEN, 15% COTTON

-

ONLY DRY CLEAN, IRON 2 DOTS, DON'T BLEACH,  
DON'T TUMBLE, HANG DRY

END USE

DRAPERY, BLINDS & LT UPHOLSTERY



## OLEARIA | NATUR01

### Customer Design

SKU No

F WIDTH

U WIDTH

V REPEAT CM

H. REPEAT CM

OVER ALL GSM

OVER ALL COMPOSITION

BASE MARTINDALE

WASH CARE

OLEARIA

NATUR01

145.5

137.5

8

5.7

420

65% POLYESTER, 19% LINEN, 16% COTTON

-

ONLY DRY CLEAN, IRON 2 DOTS, DON'T BLEACH,  
DON'T TUMBLE, HANG DRY

END USE

DRAPERY, BLINDS & LT UPHOLSTERY



## OLEARIA | NATUR02

Customer Design	OLEARIA
SKU No	NATUR02
F WIDTH	145.5
U WIDTH	137.5
V REPEAT CM	8
H. REPEAT CM	5.7
OVER ALL GSM	420
OVER ALL COMPOSITION	65% POLYESTER, 19% LINEN, 16% COTTON
BASE MARTINDALE	-
WASH CARE	ONLY DRY CLEAN, IRON 2 DOTS, DON'T BLEACH, DON'T TUMBLE, HANG DRY
END USE	DRAPERY, BLINDS & LT UPHOLSTERY



## KAHILI | NATUR26

### Customer Design

SKU No

F WIDTH

U WIDTH

V REPEAT CM

H. REPEAT CM

OVER ALL GSM

OVER ALL COMPOSITION

BASE MARTINDALE

WASH CARE

KAHILI

NATUR26

144

137

23.7

23

342

41% COTTON, 23% POLYESTER, 19% LINEN, 17% VISCOSE

-

ONLY DRY CLEAN, IRON 2 DOTS, DON'T BLEACH,  
DON'T TUMBLE, HANG DRY

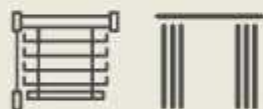
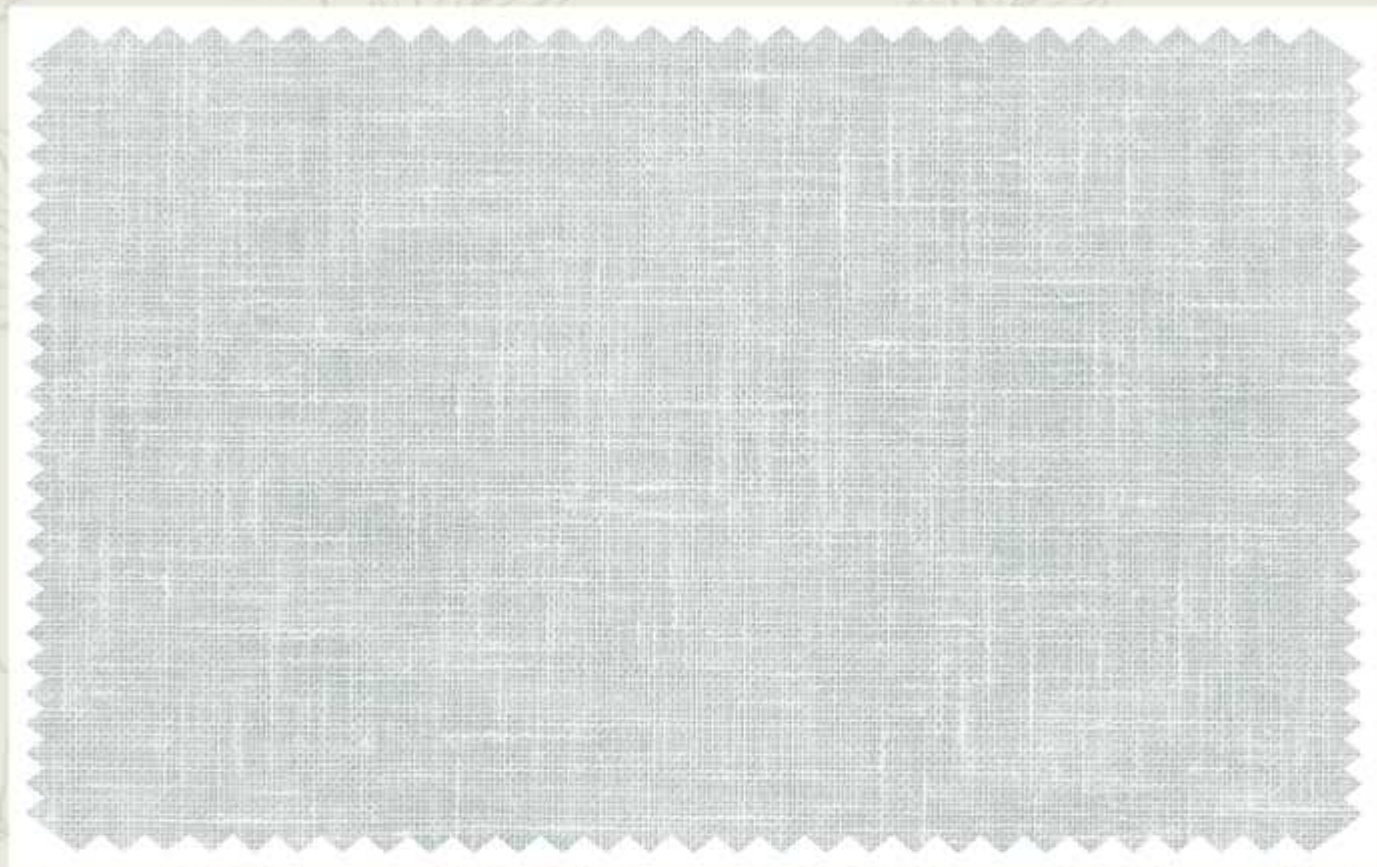
END USE

DRAPERY, BLINDS & LT UPHOLSTERY



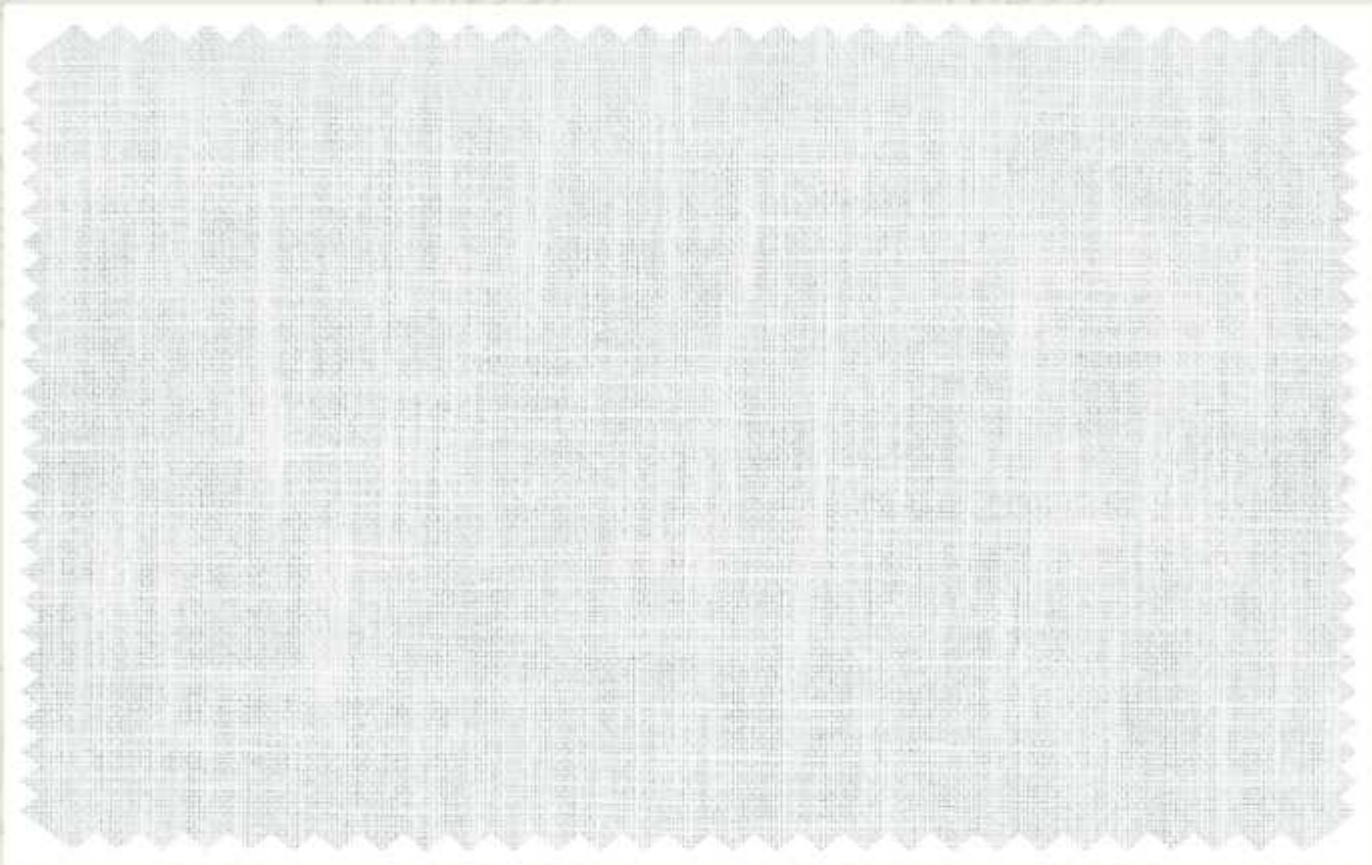
## KAHILI | NATUR27

Customer Design	KAHILI
SKU No	NATUR27
F WIDTH	144
U WIDTH	137
V REPEAT CM	23.7
H. REPEAT CM	23
OVER ALL GSM	342
OVER ALL COMPOSITION	41% COTTON, 23% POLYESTER, 19% LINEN, 17% VISCOSE
BASE MARTINDALE	-
WASH CARE	ONLY DRY CLEAN, IRON 2 DOTS, DON'T BLEACH, DON'T TUMBLE, HANG DRY
END USE	DRAPERY, BLINDS & LT UPHOLSTERY



## CALIX | NATUR28

Customer Design	CALIX
SKU No	NATUR28
F WIDTH	143
U WIDTH	140
V REPEAT CM	-
H. REPEAT CM	-
OVER ALL GSM	100
OVER ALL COMPOSITION	60% COTTON, 40% POLYESTER
BASE MARTINDALE	-
WASH CARE	M/C WASH AT 40°C, IRONING- 2 DOTS, DRY- HANG DRY, TUMBLE DRY- DON'T, BLEACH- DON'T, DRY CLEAN-CAN DRY CLEAN
END USE	DRAPERY & BLINDS



## BLAZE | NATUR35

<b>Customer Design</b>	<b>BLAZE</b>
<b>SKU No</b>	<b>NATUR35</b>
<b>F WIDTH</b>	<b>143</b>
<b>U WIDTH</b>	<b>140</b>
<b>V REPEAT CM</b>	<b>-</b>
<b>H. REPEAT CM</b>	<b>-</b>
<b>OVER ALL GSM</b>	<b>295</b>
<b>OVER ALL COMPOSITION</b>	<b>50% COT, 35% VI, 15% LI</b>
<b>BASE MARTINDALE</b>	<b>30000</b>
<b>WASH CARE</b>	<b>M/C WASH AT 40°C, IRONING- 2 DOTS, DRY- HANG DRY, TUMBLE DRY- DON'T, BLEACH- DON'T, DRY CLEAN-CAN DRY CLEAN</b>
<b>END USE</b>	<b>DRAPERY, BLINDS &amp; UPHOLSTERY</b>



## AZAMI | NATUR33

### Customer Design

SKU No

F WIDTH

U WIDTH

V REPEAT CM

H. REPEAT CM

OVER ALL GSM

OVER ALL COMPOSITION

BASE MARTINDALE

WASH CARE

AZAMI

NATUR33

143

140

-

-

325

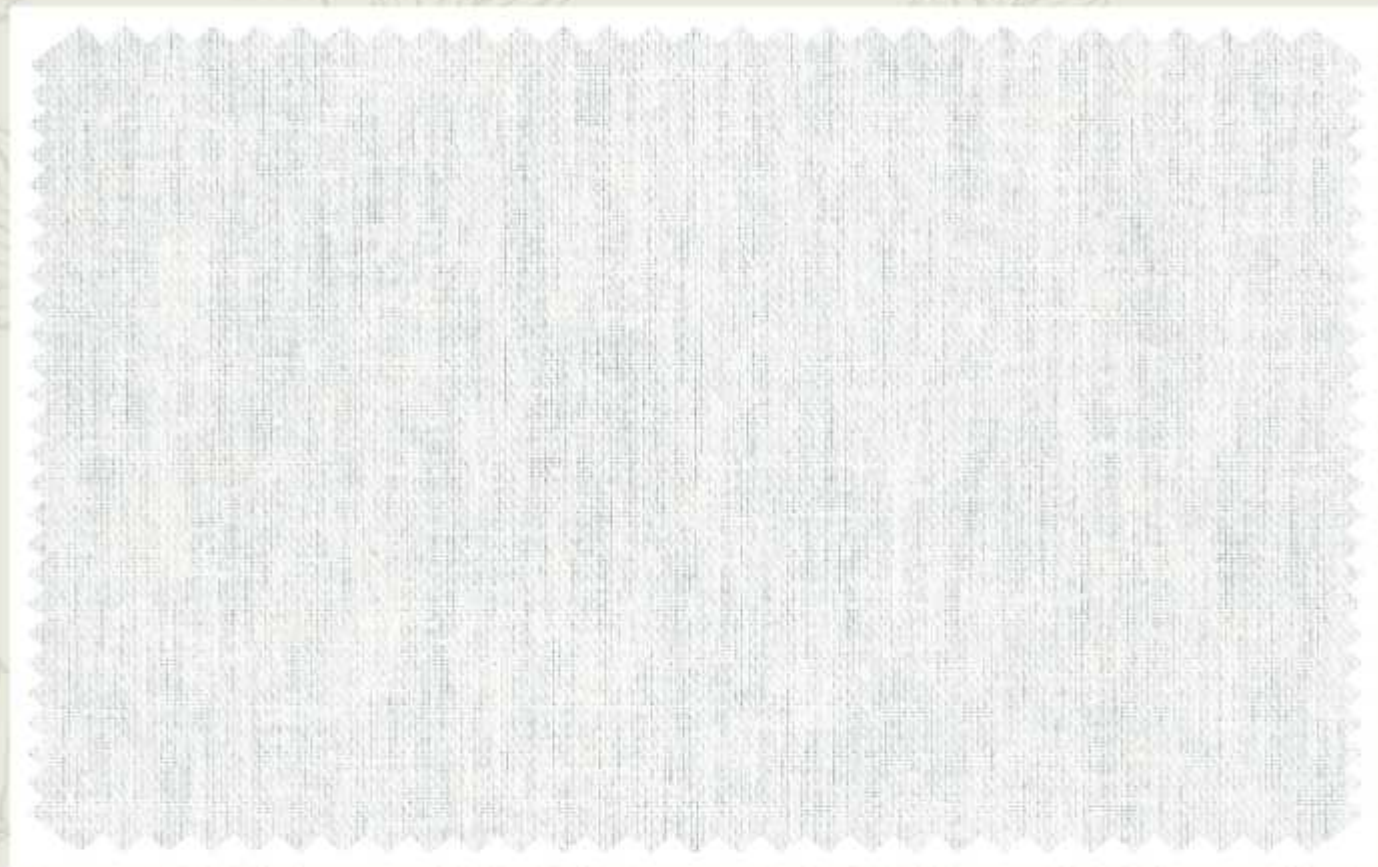
42% CO, 20% PL, 20% LI, 18% VI

100000

M/C WASH AT 40°C, IRONING- 2 DOTS, DRY- HANG DRY,  
TUMBLE DRY- DON'T, BLEACH- DON'T, DRY CLEAN-CAN DRY CLEAN

END USE

DRAPERY, BLINDS & UPHOLSTERY



## JAZZ | NATUR37

### Customer Design

SKU No

F WIDTH

U WIDTH

V REPEAT CM

H. REPEAT CM

OVER ALL GSM

OVER ALL COMPOSITION

BASE MARTINDALE

WASH CARE

JAZZ

NATUR37

143

140

-

-

268

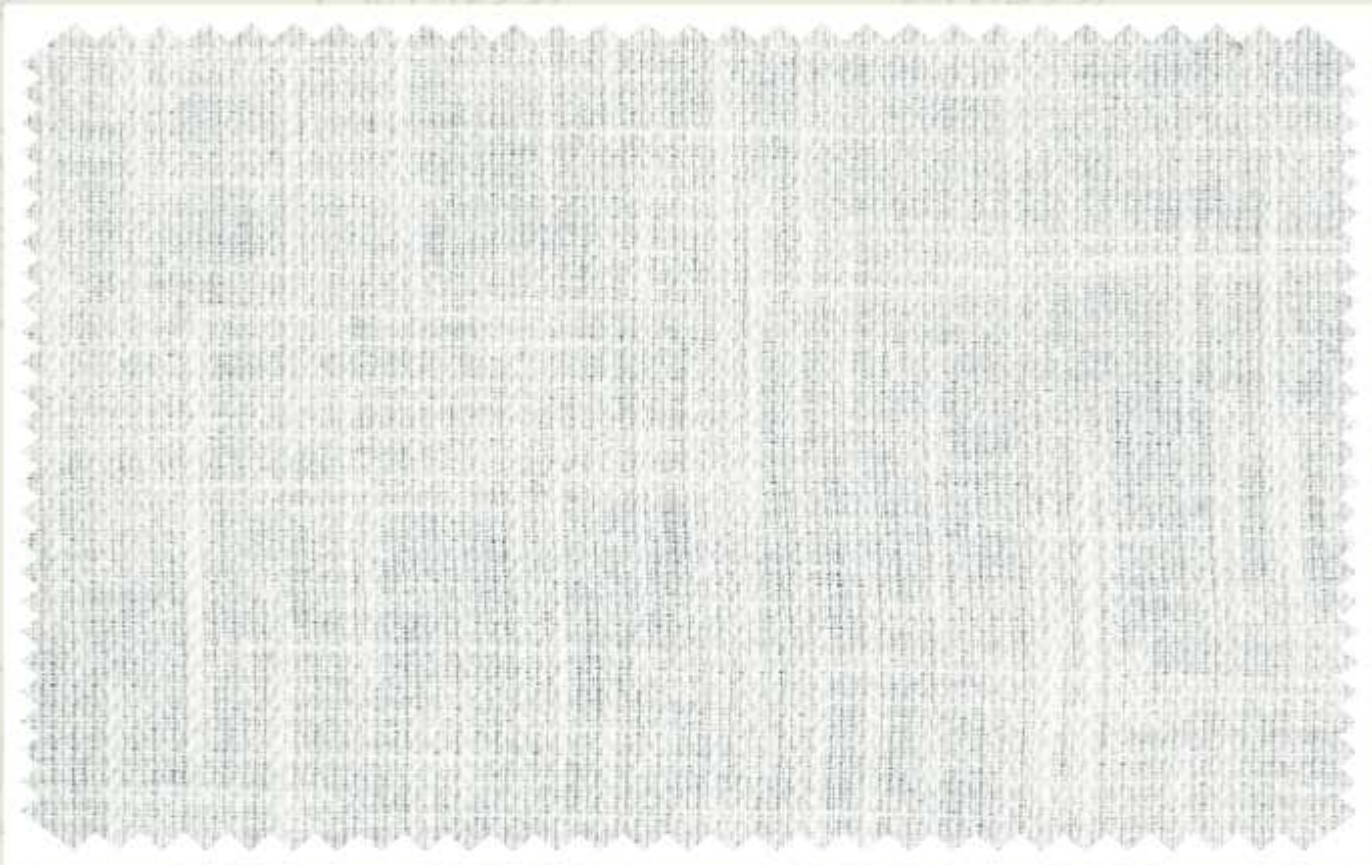
68% PL, 21% LI, 11% CO

100000

M/C WASH AT 40°C, IRONING- 2 DOTS, DRY- HANG DRY,  
TUMBLE DRY- DON'T, BLEACH- DON'T, DRY CLEAN-CAN DRY CLEAN

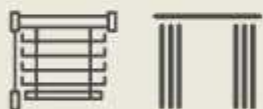
END USE

DRAPERY, BLINDS & UPHOLSTERY



## BRIAR | NATUR31

<b>Customer Design</b>	<b>BRIAR</b>
<b>SKU No</b>	<b>NATUR31</b>
<b>F WIDTH</b>	<b>143</b>
<b>U WIDTH</b>	<b>140</b>
<b>V REPEAT CM</b>	<b>-</b>
<b>H. REPEAT CM</b>	<b>-</b>
<b>OVER ALL GSM</b>	<b>320</b>
<b>OVER ALL COMPOSITION</b>	<b>42% CO, 20% LI, 20% PL, 18% VI</b>
<b>BASE MARTINDALE</b>	<b>25000</b>
<b>WASH CARE</b>	<b>M/C WASH AT 40°C, IRONING- 2 DOTS, DRY- HANG DRY, TUMBLE DRY- DON'T, BLEACH- DON'T, DRY CLEAN-CAN DRY CLEAN</b>
<b>END USE</b>	<b>DRAPERY, BLINDS &amp; UPHOLSTERY</b>



## CALIX | NATUR29

Customer Design	CALIX
SKU No	NATUR29
F WIDTH	143
U WIDTH	140
V REPEAT CM	-
H. REPEAT CM	-
OVER ALL GSM	100
OVER ALL COMPOSITION	60% COTTON, 40% POLYESTER
BASE MARTINDALE	-
WASH CARE	M/C WASH AT 40°C, IRONING- 2 DOTS, DRY- HANG DRY, TUMBLE DRY- DON'T, BLEACH- DON'T, DRY CLEAN-CAN DRY CLEAN
END USE	DRAPERY & BLINDS



## BLAZE | NATUR34

Customer Design	BLAZE
SKU No	NATUR34
F WIDTH	143
U WIDTH	140
V REPEAT CM	-
H. REPEAT CM	-
OVER ALL GSM	295
OVER ALL COMPOSITION	50% COT, 35% VI, 15% LI
BASE MARTINDALE	30000
WASH CARE	M/C WASH AT 40°C, IRONING- 2 DOTS, DRY- HANG DRY, TUMBLE DRY- DON'T, BLEACH- DON'T, DRY CLEAN-CAN DRY CLEAN
END USE	DRAPERY, BLINDS & UPHOLSTERY



## AZAMI | NATUR33

### Customer Design

SKU No

F WIDTH

U WIDTH

V REPEAT CM

H. REPEAT CM

OVER ALL GSM

OVER ALL COMPOSITION

BASE MARTINDALE

WASH CARE

AZAMI

NATUR33

143

140

-

-

325

42% CO, 20% PL, 20% LI, 18% VI

100000

M/C WASH AT 40°C, IRONING- 2 DOTS, DRY- HANG DRY,  
TUMBLE DRY- DON'T, BLEACH- DON'T, DRY CLEAN-CAN DRY CLEAN

END USE

DRAPERY, BLINDS & UPHOLSTERY



## JAZZ | NATUR36

Customer Design	JAZZ
SKU No	NATUR36
F WIDTH	143
U WIDTH	140
V REPEAT CM	-
H. REPEAT CM	-
OVER ALL GSM	268
OVER ALL COMPOSITION	68% PL, 21% LI, 11% CO
BASE MARTINDALE	100000
WASH CARE	M/C WASH AT 40°C, IRONING- 2 DOTS, DRY- HANG DRY, TUMBLE DRY- DON'T, BLEACH- DON'T, DRY CLEAN-CAN DRY CLEAN
END USE	DRAPERY, BLINDS & UPHOLSTERY



## BRIAR | NATUR30

### Customer Design

SKU No

F WIDTH

U WIDTH

V REPEAT CM

H. REPEAT CM

OVER ALL GSM

OVER ALL COMPOSITION

BASE MARTINDALE

WASH CARE

BRIAR

NATUR30

143

140

-

-

320

42% CO, 20% LI, 20% PL, 18% VI

25000

M/C WASH AT 40°C, IRONING- 2 DOTS, DRY- HANG DRY,  
TUMBLE DRY- DON'T, BLEACH- DON'T, DRY CLEAN-CAN DRY CLEAN

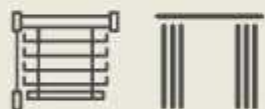
END USE

DRAPERY, BLINDS & UPHOLSTERY



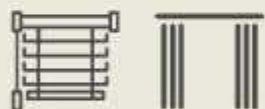
## HOLLY | NATUR19

Customer Design	HOLLY
SKU No	NATUR19
F WIDTH	142
U WIDTH	133
V REPEAT CM	4
H. REPEAT CM	4.5
OVER ALL GSM	174
OVER ALL COMPOSITION	48% POLYESTER, 46% COTTON, 6% LINEN
BASE MARTINDALE	-
WASH CARE	30°C M/C WASH GENTLE CYCLE, IRONING-1 DOT, DRY-HANG DRY, TUMBLE DRY- DON'T, BLEACH- DON'T, DRY CLEAN-CAN DRY CLEAN
END USE	DRAPERY & BLINDS



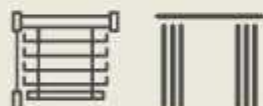
## HOLLY | NATUR20

<b>Customer Design</b>	<b>HOLLY</b>
<b>SKU No</b>	<b>NATUR20</b>
<b>F WIDTH</b>	<b>142</b>
<b>U WIDTH</b>	<b>133</b>
<b>V REPEAT CM</b>	<b>4</b>
<b>H. REPEAT CM</b>	<b>4.5</b>
<b>OVER ALL GSM</b>	<b>174</b>
<b>OVER ALL COMPOSITION</b>	<b>48% POLYESTER, 46% COTTON, 6% LINEN</b>
<b>BASE MARTINDALE</b>	<b>-</b>
<b>WASH CARE</b>	<b>30°C M/C WASH GENTLE CYCLE, IRONING-1 DOT, DRY-HANG DRY, TUMBLE DRY- DON'T, BLEACH- DON'T, DRY CLEAN-CAN DRY CLEAN</b>
<b>END USE</b>	<b>DRAPERY &amp; BLINDS</b>



## WISTERIA | NATUR45

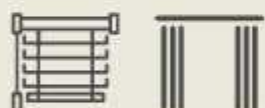
<b>Customer Design</b>	<b>WISTERIA</b>
<b>SKU No</b>	<b>NATUR45</b>
<b>F WIDTH</b>	<b>142</b>
<b>U WIDTH</b>	<b>138</b>
<b>V REPEAT CM</b>	<b>8</b>
<b>H. REPEAT CM</b>	<b>11.5</b>
<b>OVER ALL GSM</b>	<b>140</b>
<b>OVER ALL COMPOSITION</b>	<b>50% COTTON, 46% POLYESTER, 4% LINEN</b>
<b>BASE MARTINDALE</b>	<b>-</b>
<b>WASH CARE</b>	<b>30°C M/C WASH GENTLE CYCLE, IRONING-1 DOT, DRY-HANG DRY, TUMBLE DRY- DON'T, BLEACH- DON'T, DRY CLEAN-CAN DRY CLEAN</b>
<b>END USE</b>	<b>DRAPERY &amp; BLINDS</b>



## WISTERIA | NATUR46

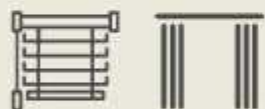
<b>Customer Design</b>	<b>WISTERIA</b>
<b>SKU No</b>	<b>NATUR46</b>
<b>F WIDTH</b>	<b>142</b>
<b>U WIDTH</b>	<b>138</b>
<b>V REPEAT CM</b>	<b>8</b>
<b>H. REPEAT CM</b>	<b>11.5</b>
<b>OVER ALL GSM</b>	<b>140</b>
<b>OVER ALL COMPOSITION</b>	<b>50% COTTON, 46% POLYESTER, 4% LINEN</b>
<b>BASE MARTINDALE</b>	<b>-</b>
<b>WASH CARE</b>	<b>30°C M/C WASH GENTLE CYCLE, IRONING-1 DOT, DRY-HANG DRY, TUMBLE DRY- DON'T, BLEACH- DON'T, DRY CLEAN-CAN DRY CLEAN</b>
<b>END USE</b>	<b>DRAPERY &amp; BLINDS</b>





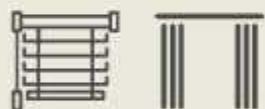
## LILAC | NATUR23

Customer Design	LILAC
SKU No	NATUR23
F WIDTH	142
U WIDTH	134
V REPEAT CM	16
H. REPEAT CM	33.5
OVER ALL GSM	152
OVER ALL COMPOSITION	40% COTTON, 34% VISCOSE, 26% POLYESTER
BASE MARTINDALE	-
WASH CARE	30°C M/C WASH GENTLE CYCLE, IRONING-1 DOT, DRY-HANG DRY, TUMBLE DRY- DON'T, BLEACH- DON'T, DRY CLEAN-CAN DRY CLEAN
END USE	DRAPERY & BLINDS



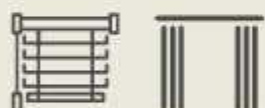
## LILAC | NATUR24

<b>Customer Design</b>	LILAC
<b>SKU No</b>	NATUR24
<b>F WIDTH</b>	142
<b>U WIDTH</b>	134
<b>V REPEAT CM</b>	16
<b>H. REPEAT CM</b>	33.5
<b>OVER ALL GSM</b>	152
<b>OVER ALL COMPOSITION</b>	40% COTTON, 34% VISCOSE, 26% POLYESTER
<b>BASE MARTINDALE</b>	-
<b>WASH CARE</b>	30°C M/C WASH GENTLE CYCLE, IRONING-1 DOT, DRY-HANG DRY, TUMBLE DRY- DON'T, BLEACH- DON'T, DRY CLEAN-CAN DRY CLEAN
<b>END USE</b>	DRAPERY & BLINDS



## NATALIA | NATUR49

<b>Customer Design</b>	<b>NATALIA</b>
<b>SKU No</b>	<b>NATUR49</b>
<b>F WIDTH</b>	<b>145</b>
<b>U WIDTH</b>	<b>136</b>
<b>V REPEAT CM</b>	<b>32.5</b>
<b>H. REPEAT CM</b>	<b>27.5</b>
<b>OVER ALL GSM</b>	<b>140</b>
<b>OVER ALL COMPOSITION</b>	<b>50% COTTON, 46% POLYESTER, 4% LINEN</b>
<b>BASE MARTINDALE</b>	<b>-</b>
<b>WASH CARE</b>	<b>ONLY DRY CLEAN, IRON 1 DOTS, DON'T BLEACH, DON'T TUMBLE, HANG DRY</b>
<b>END USE</b>	<b>DRAPERY &amp; BLINDS</b>



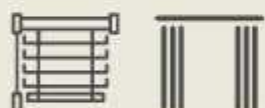
## NATALIA | NATUR50

<b>Customer Design</b>	<b>NATALIA</b>
<b>SKU No</b>	<b>NATUR50</b>
<b>F WIDTH</b>	<b>145</b>
<b>U WIDTH</b>	<b>136</b>
<b>V REPEAT CM</b>	<b>32.5</b>
<b>H. REPEAT CM</b>	<b>27.5</b>
<b>OVER ALL GSM</b>	<b>140</b>
<b>OVER ALL COMPOSITION</b>	<b>50% COTTON, 46% POLYESTER, 4% LINEN</b>
<b>BASE MARTINDALE</b>	<b>-</b>
<b>WASH CARE</b>	<b>ONLY DRY CLEAN, IRON 1 DOTS, DON'T BLEACH, DON'T TUMBLE, HANG DRY</b>
<b>END USE</b>	<b>DRAPERY &amp; BLINDS</b>



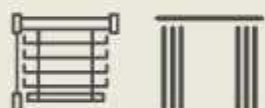
## MAGNOLIA | NATUR11

Customer Design	MAGNOLIA
SKU No	NATUR11
F WIDTH	142
U WIDTH	134
V REPEAT CM	16.7
H. REPEAT CM	27
OVER ALL GSM	152
OVER ALL COMPOSITION	48% COTTON, 47% POLYESTER, 5% LINEN
BASE MARTINDALE	-
WASH CARE	30°C M/C WASH GENTLE CYCLE, IRONING-1 DOT, DRY-HANG DRY, TUMBLE DRY- DON'T, BLEACH- DON'T, DRY CLEAN-CAN DRY CLEAN
END USE	DRAPERY & BLINDS



## MAGNOLIA | NATUR12

Customer Design	MAGNOLIA
SKU No	NATUR12
F WIDTH	142
U WIDTH	134
V REPEAT CM	16.7
H. REPEAT CM	27
OVER ALL GSM	152
OVER ALL COMPOSITION	48% COTTON, 47% POLYESTER, 5% LINEN
BASE MARTINDALE	-
WASH CARE	30°C M/C WASH GENTLE CYCLE, IRONING-1 DOT, DRY-HANG DRY, TUMBLE DRY- DON'T, BLEACH- DON'T, DRY CLEAN-CAN DRY CLEAN
END USE	DRAPERY & BLINDS



## KALINA | NATUR41

<b>Customer Design</b>	<b>KALINA</b>
<b>SKU No</b>	<b>NATUR41</b>
<b>F WIDTH</b>	<b>141.5</b>
<b>U WIDTH</b>	<b>133</b>
<b>V REPEAT CM</b>	<b>24</b>
<b>H. REPEAT CM</b>	<b>16.5</b>
<b>OVER ALL GSM</b>	<b>266</b>
<b>OVER ALL COMPOSITION</b>	<b>53% POLYESTER, 38% COTTON, 9% LINEN</b>
<b>BASE MARTINDALE</b>	<b>-</b>
<b>WASH CARE</b>	<b>30°C M/C WASH GENTLE CYCLE, IRONING-1 DOT, DRY-HANG DRY, TUMBLE DRY- DON'T, BLEACH- DON'T, DRY CLEAN-CAN DRY CLEAN</b>
<b>END USE</b>	<b>DRAPERY &amp; BLINDS</b>



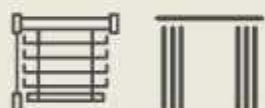
## KALINA | NATUR42

Customer Design	KALINA
SKU No	NATUR42
F WIDTH	141.5
U WIDTH	133
V REPEAT CM	24
H. REPEAT CM	16.5
OVER ALL GSM	266
OVER ALL COMPOSITION	53% POLYESTER, 38% COTTON, 9% LINEN
BASE MARTINDALE	-
WASH CARE	30°C M/C WASH GENTLE CYCLE, IRONING-1 DOT, DRY-HANG DRY, TUMBLE DRY- DON'T, BLEACH- DON'T, DRY CLEAN-CAN DRY CLEAN
END USE	DRAPERY & BLINDS



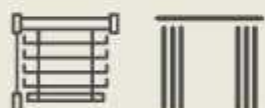
## ARBOR | NATUR43

Customer Design	ARBOR
SKU No	NATUR43
F WIDTH	145.5
U WIDTH	138
V REPEAT CM	8
H. REPEAT CM	8.5
OVER ALL GSM	480
OVER ALL COMPOSITION	65% POLYESTER, 18%LINEN, 17% COTTON
BASE MARTINDALE	-
WASH CARE	ONLY DRY CLEAN, IRON 2 DOTS, DON'T BLEACH, DON'T TUMBLE, HANG DRY
END USE	DRAPERY, BLINDS & LT UPHOLSTERY



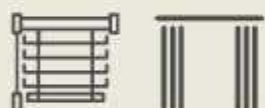
## JACINTHA | NATUR16

Customer Design	JACINTHA
SKU No	NATUR16
F WIDTH	143
U WIDTH	134.5
V REPEAT CM	16
H. REPEAT CM	33.7
OVER ALL GSM	182
OVER ALL COMPOSITION	39% COTTON, 36% POLYESTER, 21% VISCOSE, 4% LINEN
BASE MARTINDALE	-
WASH CARE	30°C M/C WASH GENTLE CYCLE, IRONING-1 DOT, DRY-HANG DRY, TUMBLE DRY- DON'T, BLEACH- DON'T, DRY CLEAN-CAN DRY CLEAN
END USE	DRAPERY & BLINDS



## LATIL | NATUR51

Customer Design	LATIL
SKU No	NATUR51
F WIDTH	142
U WIDTH	136
V REPEAT CM	23.5
H. REPEAT CM	45
OVER ALL GSM	182
OVER ALL COMPOSITION	40% COTTON, 40% POLYESTER, 16% VISCOSE, 4% LINEN
BASE MARTINDALE	-
WASH CARE	30°C M/C WASH GENTLE CYCLE, IRONING-1 DOT, DRY-HANG DRY, TUMBLE DRY- DON'T, BLEACH- DON'T, DRY CLEAN-CAN DRY CLEAN
END USE	DRAPERY & BLINDS



## LATIL | NATUR52

Customer Design	LATIL
SKU No	NATUR52
F WIDTH	142
U WIDTH	136
V REPEAT CM	23.5
H. REPEAT CM	45
OVER ALL GSM	182
OVER ALL COMPOSITION	40% COTTON, 40% POLYESTER, 16% VISCOSE, 4% LINEN
BASE MARTINDALE	-
WASH CARE	30°C M/C WASH GENTLE CYCLE, IRONING-1 DOT, DRY-HANG DRY, TUMBLE DRY- DON'T, BLEACH- DON'T, DRY CLEAN-CAN DRY CLEAN
END USE	DRAPERY & BLINDS

# NATURALIA

DESIGN	IXIA	HEATHER	LATICA	KATY
F / U WIDTH	145 / 137.5 cm	145 / 134 cm	144.5 / 138.5 cm	145 / 140 cm
COMPOSITION	65%POLYESTER, 19%LINEN, 16%COTTON	66%POLY, 19%LINEN, 15%COTTON	62%PL,18%LI, 12%CO, 8%VI	67%POLYESTER, 20%LINEN, 13%COTTON
GSM	420	385	340	296
HORIZONTAL REPEAT	17.1	12	45.7	26.7
VERTICAL REPEAT	23.5	12	23.2	32
MARTINDALE	-	-	-	-
WASH CARE				
END USE				

## WASH CARE

Wash at 30°	Do not Bleach	Do not Tumble Dry	Hang Dry	Dry Clean	Iron upto 2 Dots

## END USE

DRAPERY, BLINDS & LT UPHOLSTERY

# NATURALIA

DESIGN	FREESIA	ARBOR	IONE	HYACINTH
F / U WIDTH	145 / 138 cm	145.5 / 138 cm	145.5 / 138 cm	145 / 141 cm
COMPOSITION	65%POLYESTER, 20%LINEN, 15%COTTON	65%POLYESTER, 18%LINEN, 17%COTTON	65%POLYESTER, 20%LINEN, 15%COTTON	66%POLYESTER, 19%LINEN, 15%COTTON
GSM	360	480	360	358
HORIZONTAL REPEAT	13.7	8.5	23	15.7
VERTICAL REPEAT	23.3	8	16	7.8
MARTINDALE	-	-	-	-
WASH CARE				
END USE				

## WASH CARE

Wash at 30°	Do not Bleach	Do not Tumble Dry	Hang Dry	Dry Clean	Iron upto 2 Dots

## END USE

DRAPERY, BLINDS & LT UPHOLSTERY

# NATURALIA

DESIGN	LEILANI	ZINNIA	GINGER	NANALA
F / U WIDTH	145 / 137 cm	144.5 / 137 cm	145 / 138 cm	145 / 138 cm
COMPOSITION	66%POLYESTER, 20%LINEN, 14%COTTON	65%POLYESTER, 19%LINEN, 16%COTTON	62%POLYESTER, 19%LINEN, 10%COTTON, 9%VISCOSE	66%POLYESTER, 19%LINEN, 15%COTTON
GSM	340	432	294	384
HORIZONTAL REPEAT	23	6.8	34.5	12.8
VERTICAL REPEAT	24	3.4	16.2	5.2
MARTINDALE	-	-	-	-
WASH CARE				
END USE				

## WASH CARE

Wash at 30°	Do not Bleach	Do not Tumble Dry	Hang Dry	Dry Clean	Iron upto 2 Dots

## END USE

DRAPERY, BLINDS & LT UPHOLSTERY

# NATURALIA

DESIGN	OLEARIA	KAHILI	CALIX	BLAZE
F / U WIDTH	145.5 / 137.5 cm	144 / 137 cm	143 / 140 cm	143 / 140 cm
COMPOSITION	65%POLYESTER, 19%LINEN, 16% COTTON	41% COTTON, 23%POLYESTER, 19%LINEN, 17%VISCOSE	60% COTTON, 40%POLYESTER	50% COT, 35% VI, 15% LI
GSM	420	342	100	295
HORIZONTAL REPEAT	5.7	23	-	-
VERTICAL REPEAT	8	23.7	-	-
MARTINDALE	-	-	-	30000
WASH CARE				
END USE				

## WASH CARE

Wash at 40°	Wash at 30°	Do not Bleach	Do not Tumble Dry	Hang Dry	Dry Clean	Iron upto 2 Dots

## END USE

DRAPERY, BLINDS & LT UPHOLSTERY

**adôr**  
furnishing by Asianpaints

# NATURALIA

DESIGN	AZAMI	JAZZ	BRIAR	HOLLY
F / U WIDTH	143 / 140 cm	143 / 140 cm	143 / 140 cm	142 / 133 cm
COMPOSITION	42%CO, 20%PL, 20%LI, 18%VI	68%PL, 21%LI, 11%CO	42%CO, 20%LI, 20%PL, 18%VI,	48%POLYESTER, 46%COTTON, 6%LINEN
GSM	325	268	320	174
HORIZONTAL REPEAT	-	-	-	4.5
VERTICAL REPEAT	-	-	-	4
MARTINDALE	100000	100000	25000	-
WASH CARE				
END USE				

## WASH CARE

Wash at 40°	Wash at 30°	Do not Bleach	Do not Tumble Dry	Hang Dry	Dry Clean	Iron upto 2 Dots	Iron upto 1 Dot

## END USE

DRAPERY, BLINDS & LT UPHOLSTERY		

# NATURALIA

DESIGN	WISTERIA	LILAC	NATALIA	MAGNOLIA
F / U WIDTH	142 / 138 cm	142 / 134 cm	145 / 136 cm	142 / 134 cm
COMPOSITION	50% COTTON, 46% POLYESTER, 4% LINEN	40% COTTON, 34% VISCOSE, 26% POLYESTER	50% COTTON, 46% POLYESTER, 4% LINEN	48% COTTON, 47% POLYESTER, 5% LINEN
GSM	140	152	140	152
HORIZONTAL REPEAT	11.5	33.5	27.5	27
VERTICAL REPEAT	8	16	32.5	16.7
MARTINDALE	-	-	-	-
WASH CARE				
END USE				

## WASH CARE

Wash at 30°	Do not Bleach	Do not Tumble Dry	Hang Dry	Dry Clean	Iron upto 1 Dot

## END USE

Drapery & Blinds

# NATURALIA

DESIGN	KALINA	JACINTHA	LATIL
F / U WIDTH	141.5 / 133 cm	143 / 134.5 cm	142 / 136 cm
COMPOSITION	53%POLYESTER, 38% COTTON, 9%LINEN	39% COTTON, 36%POLYESTER, 21%VISCOSE, 4%LINEN	40% COTTON, 40%POLYESTER, 16%VISCOSE, 4%LINEN
GSM	266	182	182
HORIZONTAL REPEAT	16.5	33.7	45
VERTICAL REPEAT	24	16	23.5
MARTINDALE	-	-	-
WASH CARE			
END USE			

## WASH CARE

Wash at 30°	Do not Bleach	Do not Tumble Dry	Hang Dry	Dry Clean	Iron upto 1 Dot

## END USE

Drapery & Blinds