

# adôr

furnishing by  asianpaints

## BUSAN

Colorful Embroidery Mains





# BUSAN

Immerse yourself in the natural countryside with Busan by Ador, a collection of colorful embroidery on a natural look base fabric. Featuring gorgeous botanical embroideries and few abstract geometrics, the designs range from minimalistic floral motifs in neutral shades such as silver and beige, to colourful floral trellises, to opulent and intricate paisley designs.

The collection offers use of various stitch techniques each unique in its application, giving each design its own unique character. These fabrics are perfect for drapes and decorative upholstery, giving your home a vibrant and contemporary look.

# Busan | Collection Overview

**adôr**  
furnishing by  asianpaints

TRIVIA | BUSA001



CITRA | BUSA002



ESTELLE | BUSA003



TRIVIA | BUSA004



PERTH | BUSA005



CITRA | BUSA006



CITRA | BUSA007



# Busan | Collection Overview

**adôr**  
furnishing by  asianpaints

CITRA | BUSA008



CITRA | BUSA009



CITRA | BUSA010



CITRA | BUSA011



ESTELLE | BUSA012



ESTELLE | BUSA015



ESTELLE | BUSA013



# Busan | Collection Overview

**adôr**  
furnishing by  asianpaints

**ESTELLE | BUSA014**



**VARDO | BUSA017**



**VARDO | BUSA018**



**VARDO | BUSA019**



**VARDO | BUSA016**



**DAZE | BUSA020**



**DAZE | BUSA021**



# Busan | Collection Overview

**adôr**  
furnishing by  asianpaints

DAZE | BUSA022



KALON | BUSA023



KALON | BUSA024



KALON | BUSA025



KENTIA | BUSA026



KENTIA | BUSA027



KENTIA | BUSA028



# Busan | Collection Overview

**adôr**  
furnishing by  asianpaints



KENTIA | BUSA029



KENTIA | BUSA030



HARLOW | BUSA031



HARLOW | BUSA032



HARLOW | BUSA033



YUZEN | BUSA034



YUZEN | BUSA035



# Busan | Collection Overview

**adôr**  
furnishing by  asianpaints



**YUZEN | BUSA036**



**GINERVA | BUSA037**



**GINERVA | BUSA038**



**GINERVA | BUSA039**



**MEDORA | BUSA040**



**MEDORA | BUSA041**



**MEDORA | BUSA042**





## TRIVIA | BUSA001

CUST DESIGN

TRIVIA

SKU NO.

BUSA001

F WIDTH

144

U WIDTH

138

V REPEAT CM

23.5

H. REPEAT CM

23

GSM

312

COMPOSITION

56% POLYESTER, 30% COTTON, 14% VISCOSE

MARTINDALE

-

WASH CARE

30°C M/C WASH GENTLE CYCLE, IRONING-2 DOT, DRY-HANG DRY,  
TUMBLE DRY- DON'T, BLEACH- DON'T, DRY CLEAN-CAN DRY CLEAN

END USE

CUSHION, DRAPERY & BLINDS.

◀◀ Back to Layer



## CITRA | BUSA002

**CUST DESIGN**

**CITRA**

**SKU NO.**

**BUSA002**

**F WIDTH**

**145**

**U WIDTH**

**137**

**V REPEAT CM**

**31.5**

**H. REPEAT CM**

**45**

**GSM**

**394**

**COMPOSITION**

**46% POLYESTER, 32% VISCOSE, 14% LINEN, 8% COTTON**

**MARTINDALE**

**-**

**WASH CARE**

**30°C M/C WASH GENTLE CYCLE, IRONING-2 DOT, DRY-HANG DRY,  
TUMBLE DRY- DON'T, BLEACH- DON'T, DRY CLEAN-CAN DRY CLEAN**

**END USE**

**CUSHION, DRAPERY & BLINDS.**

[◀ Back to Layer](#)



## ESTELLE | BUSA003

CUST DESIGN	ESTELLE
SKU NO.	BUSA003
F WIDTH	144
U WIDTH	140
V REPEAT CM	32.5
H. REPEAT CM	27.5
GSM	318
COMPOSITION	58% COTTON, 29% POLYESTER, 13% VISCOSE
MARTINDALE	-
WASH CARE	ONLY DRY CLEAN, IRON 2 DOTS ON REVERSE SIDE, DON'T BLEACH, DON'T TUMBLE, HANG DRY
END USE	CUSHION, DRAPERY & BLINDS.

◀◀ Back to Layer



## TRIVIA | BUSA004

CUST DESIGN

TRIVIA

SKU NO.

BUSA004

F WIDTH

144

U WIDTH

138

V REPEAT CM

23.5

H. REPEAT CM

23

GSM

312

COMPOSITION

56% POLYESTER, 30% COTTON, 14% VISCOSE

MARTINDALE

-

WASH CARE

30°C M/C WASH GENTLE CYCLE, IRONING-2 DOT, DRY-HANG DRY,  
TUMBLE DRY- DON'T, BLEACH- DON'T, DRY CLEAN-CAN DRY CLEAN

END USE

CUSHION, DRAPERY & BLINDS.

◀◀ Back to Layer



## PERTH | BUSA005

**CUST DESIGN**

**PERTH**

**SKU NO.**

**BUSA005**

**F WIDTH**

**144.5**

**U WIDTH**

**138.5**

**V REPEAT CM**

**23.5**

**H. REPEAT CM**

**23**

**GSM**

**302**

**COMPOSITION**

**55% POLYESTER, 31% COTTON, 14% VISCOSE**

**MARTINDALE**

**-**

**WASH CARE**

**30°C M/C WASH GENTLE CYCLE, IRONING-2 DOT, DRY-HANG DRY,  
TUMBLE DRY- DON'T, BLEACH- DON'T, DRY CLEAN-CAN DRY CLEAN**

**END USE**

**CUSHION, DRAPERY & BLINDS.**

[◀ Back to Layer](#)



## CITRA | BUSA006

**CUST DESIGN**

**CITRA**

**SKU NO.**

**BUSA006**

**F WIDTH**

**145**

**U WIDTH**

**137**

**V REPEAT CM**

**31.5**

**H. REPEAT CM**

**45**

**GSM**

**394**

**COMPOSITION**

**46% POLYESTER, 32% VISCOSE, 14% LINEN, 8% COTTON**

**MARTINDALE**

**-**

**WASH CARE**

**30°C M/C WASH GENTLE CYCLE, IRONING-2 DOT, DRY-HANG DRY,  
TUMBLE DRY- DON'T, BLEACH- DON'T, DRY CLEAN-CAN DRY CLEAN**

**END USE**

**CUSHION, DRAPERY & BLINDS.**

[◀ Back to Layer](#)



## CITRA | BUSA007

CUST DESIGN

CITRA

SKU NO.

BUSA007

F WIDTH

145

U WIDTH

137

V REPEAT CM

31.5

H. REPEAT CM

45

GSM

394

COMPOSITION

46% POLYESTER, 32% VISCOSE, 14% LINEN, 8% COTTON

MARTINDALE

-

WASH CARE

30°C M/C WASH GENTLE CYCLE, IRONING-2 DOT, DRY-HANG DRY,  
TUMBLE DRY- DON'T, BLEACH- DON'T, DRY CLEAN-CAN DRY CLEAN

END USE

CUSHION, DRAPERY & BLINDS.

◀◀ Back to Layer



## CITRA | BUSA008

**CUST DESIGN**

**SKU NO.**

**F WIDTH**

**U WIDTH**

**V REPEAT CM**

**H. REPEAT CM**

**GSM**

**COMPOSITION**

**MARTINDALE**

**WASH CARE**

**END USE**

**CITRA**

**BUSA008**

**145**

**137**

**31.5**

**45**

**394**

**46% POLYESTER, 32% VISCOSE, 14% LINEN, 8% COTTON**

**-**

**30°C M/C WASH GENTLE CYCLE, IRONING-2 DOT, DRY-HANG DRY,  
TUMBLE DRY- DON'T, BLEACH- DON'T, DRY CLEAN-CAN DRY CLEAN**

**CUSHION, DRAPERY & BLINDS.**

[◀ Back to Layer](#)



## CITRA | BUSA009

<b>CUST DESIGN</b>	CITRA
<b>SKU NO.</b>	BUSA009
<b>F WIDTH</b>	145
<b>U WIDTH</b>	137
<b>V REPEAT CM</b>	31.5
<b>H. REPEAT CM</b>	45
<b>GSM</b>	394
<b>COMPOSITION</b>	46% POLYESTER, 32% VISCOSE, 14% LINEN, 8% COTTON
<b>MARTINDALE</b>	-
<b>WASH CARE</b>	30°C M/C WASH GENTLE CYCLE, IRONING-2 DOT, DRY-HANG DRY, TUMBLE DRY- DON'T, BLEACH- DON'T, DRY CLEAN-CAN DRY CLEAN
<b>END USE</b>	CUSHION, DRAPERY & BLINDS.

◀◀ Back to Layer



## CITRA | BUSA010

CUST DESIGN

SKU NO.

F WIDTH

U WIDTH

V REPEAT CM

H. REPEAT CM

GSM

COMPOSITION

MARTINDALE

WASH CARE

CITRA

BUSA010

145

137

31.5

45

394

46% POLYESTER, 32% VISCOSE, 14% LINEN, 8% COTTON

-

30°C M/C WASH GENTLE CYCLE, IRONING-2 DOT, DRY-HANG DRY,  
TUMBLE DRY- DON'T, BLEACH- DON'T, DRY CLEAN-CAN DRY CLEAN

END USE

CUSHION, DRAPERY & BLINDS.

◀◀ Back to Layer



## CITRA | BUSA011

CUST DESIGN

CITRA

SKU NO.

BUSA011

F WIDTH

145

U WIDTH

137

V REPEAT CM

31.5

H. REPEAT CM

45

GSM

394

COMPOSITION

46% POLYESTER, 32% VISCOSE, 14% LINEN, 8% COTTON

MARTINDALE

-

WASH CARE

30°C M/C WASH GENTLE CYCLE, IRONING-2 DOT, DRY-HANG DRY,  
TUMBLE DRY- DON'T, BLEACH- DON'T, DRY CLEAN-CAN DRY CLEAN

END USE

CUSHION, DRAPERY & BLINDS.

◀◀ Back to Layer



## ESTELLE | BUSA012

CUST DESIGN

ESTELLE

SKU NO.

BUSA012

F WIDTH

144

U WIDTH

140

V REPEAT CM

32.5

H. REPEAT CM

27.5

GSM

318

COMPOSITION

58% COTTON, 29% POLYESTER, 13% VISCOSE

MARTINDALE

-

WASH CARE

ONLY DRY CLEAN, IRON 2 DOTS ON REVERSE SIDE,  
DON'T BLEACH, DON'T TUMBLE, HANG DRY

END USE

CUSHION, DRAPERY & BLINDS.

◀◀ Back to Layer



## ESTELLE | BUSA015

<b>CUST DESIGN</b>	ESTELLE
<b>SKU NO.</b>	BUSA015
<b>F WIDTH</b>	144
<b>U WIDTH</b>	140
<b>V REPEAT CM</b>	32.5
<b>H. REPEAT CM</b>	27.5
<b>GSM</b>	318
<b>COMPOSITION</b>	58% COTTON, 29% POLYESTER, 13% VISCOSE
<b>MARTINDALE</b>	-
<b>WASH CARE</b>	ONLY DRY CLEAN, IRON 2 DOTS ON REVERSE SIDE, DON'T BLEACH, DON'T TUMBLE, HANG DRY
<b>END USE</b>	CUSHION, DRAPERY & BLINDS.

◀◀ Back to Layer





## ESTELLE | BUSA013

**CUST DESIGN**

**ESTELLE**

**SKU NO.**

**BUSA013**

**F WIDTH**

**144**

**U WIDTH**

**140**

**V REPEAT CM**

**32.5**

**H. REPEAT CM**

**27.5**

**GSM**

**318**

**COMPOSITION**

**58% COTTON, 29% POLYESTER, 13% VISCOSE**

**MARTINDALE**

**-**

**WASH CARE**

**ONLY DRY CLEAN, IRON 2 DOTS ON REVERSE SIDE,  
DON'T BLEACH, DON'T TUMBLE, HANG DRY**

**END USE**

**CUSHION, DRAPERY & BLINDS.**

[◀ Back to Layer](#)



## ESTELLE | BUSA014

**CUST DESIGN**

**SKU NO.**

**F WIDTH**

**U WIDTH**

**V REPEAT CM**

**H. REPEAT CM**

**GSM**

**COMPOSITION**

**MARTINDALE**

**WASH CARE**

**ESTELLE**

**BUSA014**

**144**

**140**

**32.5**

**27.5**

**318**

**58% COTTON, 29% POLYESTER, 13% VISCOSE**

**-**

**ONLY DRY CLEAN, IRON 2 DOTS ON REVERSE SIDE,  
DON'T BLEACH, DON'T TUMBLE, HANG DRY**

**END USE**

**CUSHION, DRAPERY & BLINDS.**

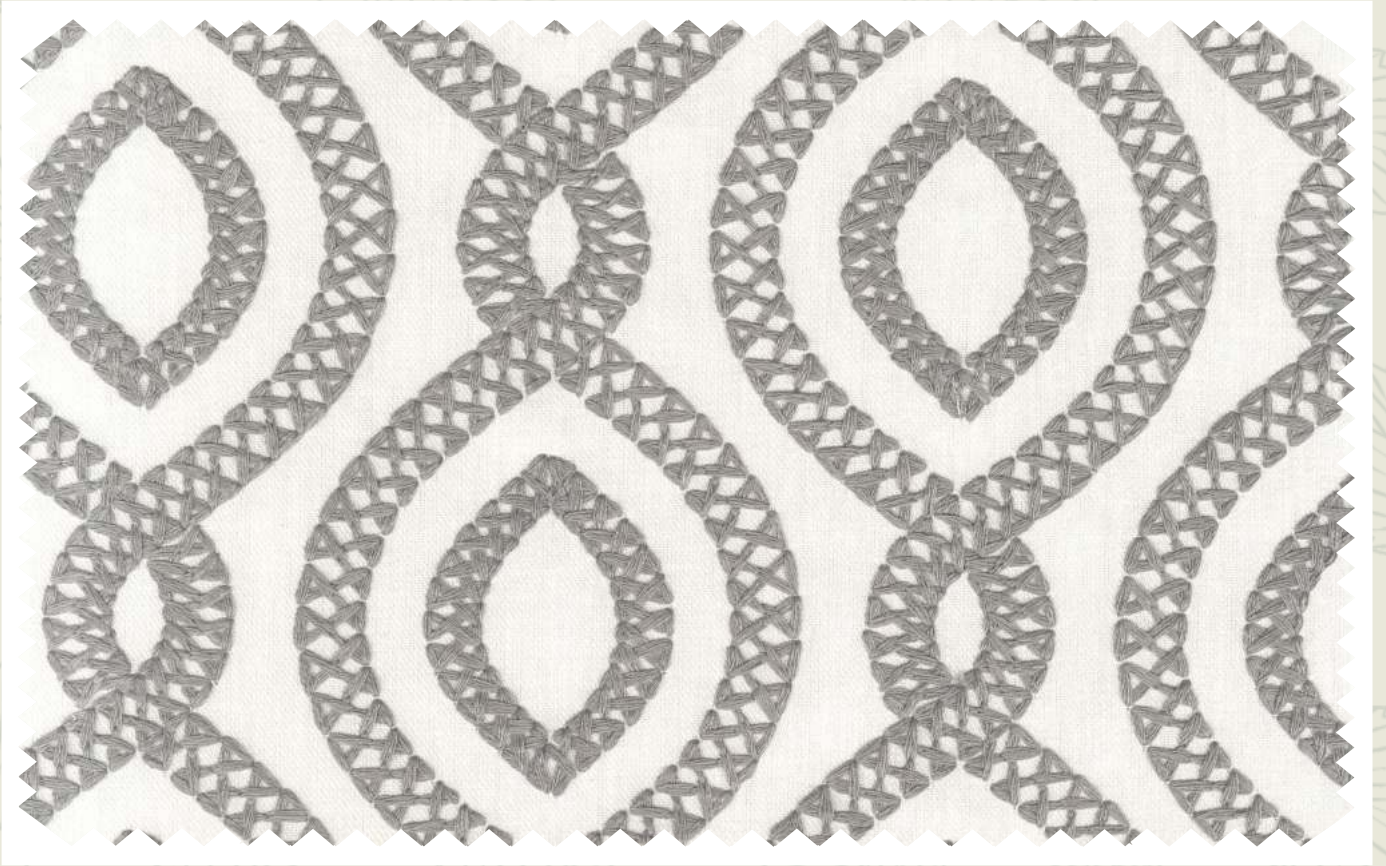
[◀◀ Back to Layer](#)



## VARDO | BUSA017

<b>CUST DESIGN</b>	VARDO
<b>SKU NO.</b>	BUSA017
<b>F WIDTH</b>	144
<b>U WIDTH</b>	136
<b>V REPEAT CM</b>	16
<b>H. REPEAT CM</b>	17
<b>GSM</b>	465
<b>COMPOSITION</b>	82% POLYESTER, 12% LINEN, 6% COTTON
<b>MARTINDALE</b>	-
<b>WASH CARE</b>	30°C M/C WASH GENTLE CYCLE, IRONING-2 DOT, DRY-HANG DRY, TUMBLE DRY- DON'T, BLEACH- DON'T, DRY CLEAN-CAN DRY CLEAN
<b>END USE</b>	CUSHION, DRAPERY & BLINDS.

◀◀ [Back to Layer](#)



## VARDO | BUSA018

<b>CUST DESIGN</b>	VARDO
<b>SKU NO.</b>	BUSA018
<b>F WIDTH</b>	144
<b>U WIDTH</b>	136
<b>V REPEAT CM</b>	16
<b>H. REPEAT CM</b>	17
<b>GSM</b>	465
<b>COMPOSITION</b>	82% POLYESTER, 12% LINEN, 6% COTTON
<b>MARTINDALE</b>	-
<b>WASH CARE</b>	30°C M/C WASH GENTLE CYCLE, IRONING-2 DOT, DRY-HANG DRY, TUMBLE DRY- DON'T, BLEACH- DON'T, DRY CLEAN-CAN DRY CLEAN
<b>END USE</b>	CUSHION, DRAPERY & BLINDS.

◀◀ Back to Layer



## VARDO | BUSA019

<b>CUST DESIGN</b>	VARDO
<b>SKU NO.</b>	BUSA019
<b>F WIDTH</b>	144
<b>U WIDTH</b>	136
<b>V REPEAT CM</b>	16
<b>H. REPEAT CM</b>	17
<b>GSM</b>	465
<b>COMPOSITION</b>	82% POLYESTER, 12% LINEN, 6% COTTON
<b>MARTINDALE</b>	-
<b>WASH CARE</b>	30°C M/C WASH GENTLE CYCLE, IRONING-2 DOT, DRY-HANG DRY, TUMBLE DRY- DON'T, BLEACH- DON'T, DRY CLEAN-CAN DRY CLEAN
<b>END USE</b>	CUSHION, DRAPERY & BLINDS.

◀◀ Back to Layer



## VARDO | BUSA016

<b>CUST DESIGN</b>	VARDO
<b>SKU NO.</b>	BUSA016
<b>F WIDTH</b>	144
<b>U WIDTH</b>	136
<b>V REPEAT CM</b>	16
<b>H. REPEAT CM</b>	17
<b>GSM</b>	465
<b>COMPOSITION</b>	82% POLYESTER, 12% LINEN, 6% COTTON
<b>MARTINDALE</b>	-
<b>WASH CARE</b>	30°C M/C WASH GENTLE CYCLE, IRONING-2 DOT, DRY-HANG DRY, TUMBLE DRY- DON'T, BLEACH- DON'T, DRY CLEAN-CAN DRY CLEAN
<b>END USE</b>	CUSHION, DRAPERY & BLINDS.

◀◀ Back to Layer



## DAZE | BUSA020

CUST DESIGN

DAZE

SKU NO.

BUSA020

F WIDTH

144.5

U WIDTH

137

V REPEAT CM

23.7

H. REPEAT CM

34

GSM

270

COMPOSITION

49% POLYESTER, 35% COTTON, 16% VISCOSE

MARTINDALE

-

WASH CARE

30°C M/C WASH GENTLE CYCLE, IRONING-2 DOT, DRY-HANG DRY,  
TUMBLE DRY- DON'T, BLEACH- DON'T, DRY CLEAN-CAN DRY CLEAN

END USE

CUSHION, DRAPERY & BLINDS.

◀◀ Back to Layer



## DAZE | BUSA021

CUST DESIGN

DAZE

SKU NO.

BUSA021

F WIDTH

144.5

U WIDTH

137

V REPEAT CM

23.7

H. REPEAT CM

34

GSM

270

COMPOSITION

49% POLYESTER, 35% COTTON, 16% VISCOSE

MARTINDALE

-

WASH CARE

30°C M/C WASH GENTLE CYCLE, IRONING-2 DOT, DRY-HANG DRY,  
TUMBLE DRY- DON'T, BLEACH- DON'T, DRY CLEAN-CAN DRY CLEAN

END USE

CUSHION, DRAPERY & BLINDS.

◀◀ Back to Layer



## DAZE | BUSA022

CUST DESIGN

DAZE

SKU NO.

BUSA022

F WIDTH

144.5

U WIDTH

137

V REPEAT CM

23.7

H. REPEAT CM

34

GSM

270

COMPOSITION

49% POLYESTER, 35% COTTON, 16% VISCOSE

MARTINDALE

-

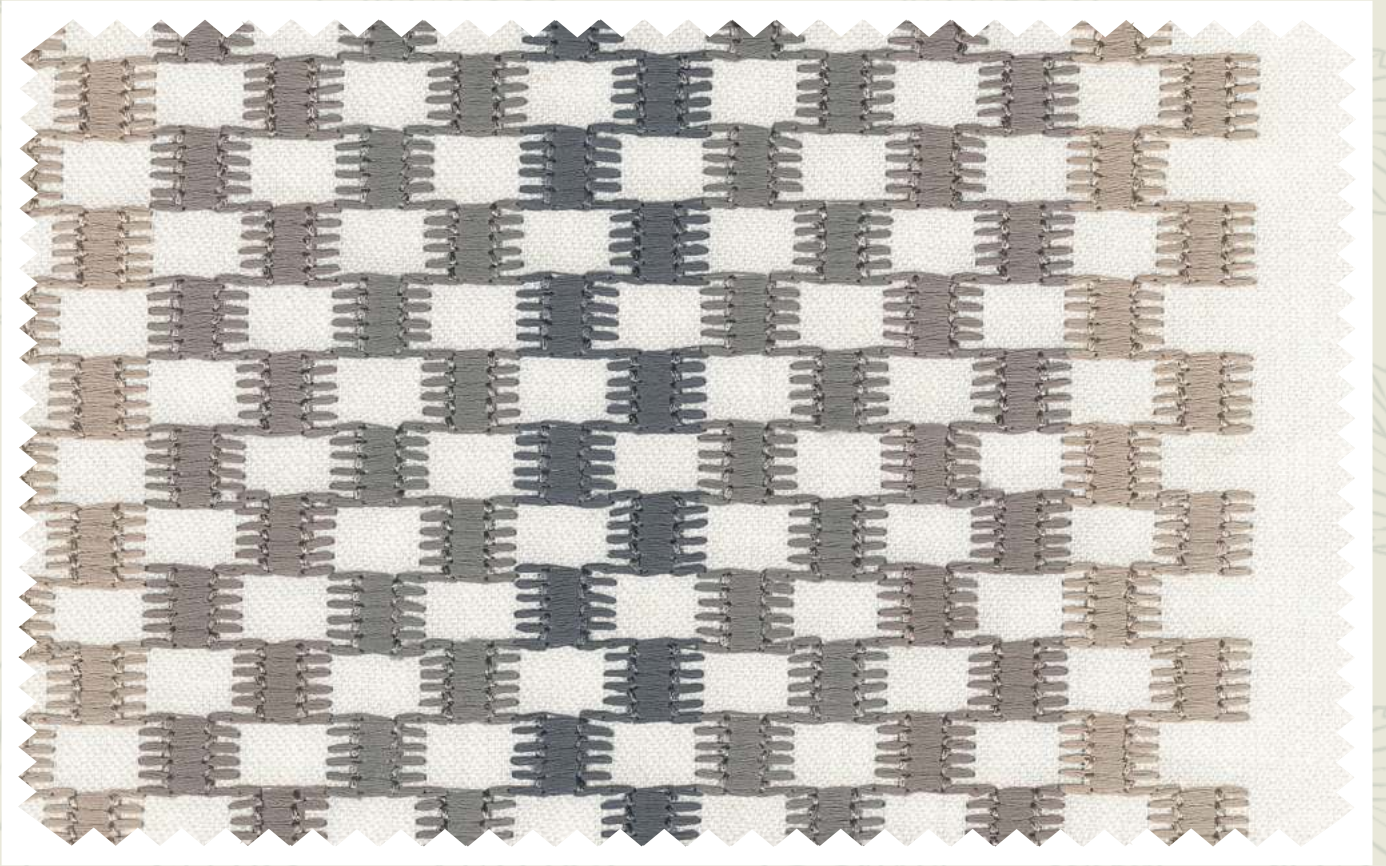
WASH CARE

30°C M/C WASH GENTLE CYCLE, IRONING-2 DOT, DRY-HANG DRY,  
TUMBLE DRY- DON'T, BLEACH- DON'T, DRY CLEAN-CAN DRY CLEAN

END USE

CUSHION, DRAPERY & BLINDS.

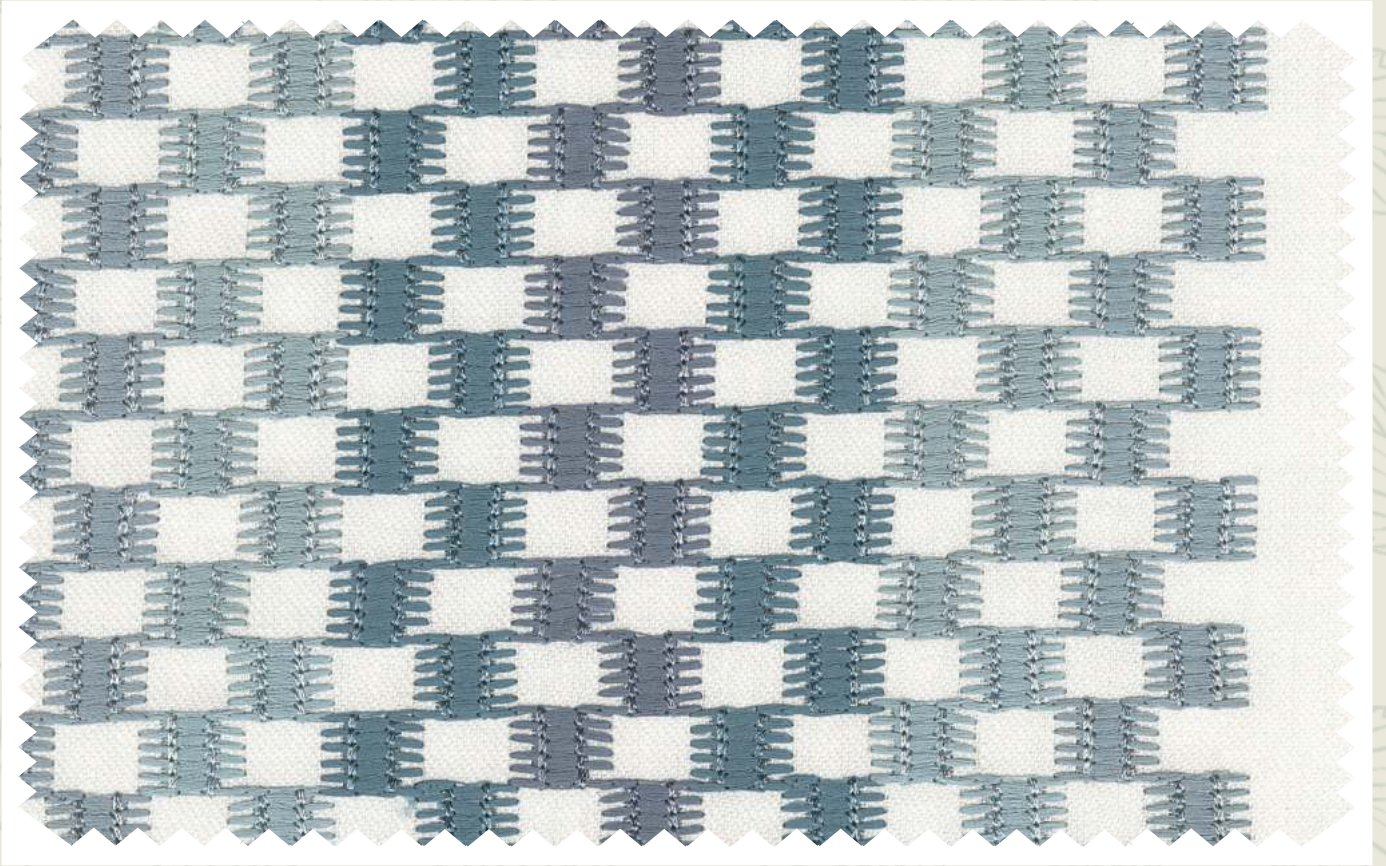
◀◀ Back to Layer



## KALON | BUSA023

<b>CUST DESIGN</b>	KALON
<b>SKU NO.</b>	BUSA023
<b>F WIDTH</b>	144
<b>U WIDTH</b>	140.5
<b>V REPEAT CM</b>	2
<b>H. REPEAT CM</b>	35
<b>GSM</b>	398
<b>COMPOSITION</b>	46% POLYESTER, 33% VISCOSE, 14% LINEN, 7% COTTON
<b>MARTINDALE</b>	-
<b>WASH CARE</b>	30°C M/C WASH GENTLE CYCLE, IRONING-2 DOT, DRY-HANG DRY, TUMBLE DRY- DON'T, BLEACH- DON'T, DRY CLEAN-CAN DRY CLEAN
<b>END USE</b>	CUSHION, DRAPERY & BLINDS.

◀◀ Back to Layer



## KALON | BUSA024

<b>CUST DESIGN</b>	KALON
<b>SKU NO.</b>	BUSA024
<b>F WIDTH</b>	144
<b>U WIDTH</b>	140.5
<b>V REPEAT CM</b>	2
<b>H. REPEAT CM</b>	35
<b>GSM</b>	398
<b>COMPOSITION</b>	46% POLYESTER, 33% VISCOSE, 14% LINEN, 7% COTTON
<b>MARTINDALE</b>	-
<b>WASH CARE</b>	30°C M/C WASH GENTLE CYCLE, IRONING-2 DOT, DRY-HANG DRY, TUMBLE DRY- DON'T, BLEACH- DON'T, DRY CLEAN-CAN DRY CLEAN
<b>END USE</b>	CUSHION, DRAPERY & BLINDS.

◀ Back to Layer



## KALON | BUSA025

<b>CUST DESIGN</b>	KALON
<b>SKU NO.</b>	BUSA025
<b>F WIDTH</b>	144
<b>U WIDTH</b>	140.5
<b>V REPEAT CM</b>	2
<b>H. REPEAT CM</b>	35
<b>GSM</b>	398
<b>COMPOSITION</b>	46% POLYESTER, 33% VISCOSE, 14% LINEN, 7% COTTON
<b>MARTINDALE</b>	-
<b>WASH CARE</b>	30°C M/C WASH GENTLE CYCLE, IRONING-2 DOT, DRY-HANG DRY, TUMBLE DRY- DON'T, BLEACH- DON'T, DRY CLEAN-CAN DRY CLEAN
<b>END USE</b>	CUSHION, DRAPERY & BLINDS.

◀◀ Back to Layer



## KENTIA | BUSA026

CUST DESIGN

KENTIA

SKU NO.

BUSA026

F WIDTH

145

U WIDTH

135.5

V REPEAT CM

23.5

H. REPEAT CM

33.8

GSM

366

COMPOSITION

50% POLYESTER, 27% VISCOSE, 15% LINEN, 8% COTTON

MARTINDALE

-

WASH CARE

30°C M/C WASH GENTLE CYCLE, IRONING-2 DOT, DRY-HANG DRY,  
TUMBLE DRY- DON'T, BLEACH- DON'T, DRY CLEAN-CAN DRY CLEAN

END USE

CUSHION, DRAPERY & BLINDS.

◀◀ Back to Layer





## KENTIA | BUSA027

<b>CUST DESIGN</b>	KENTIA
<b>SKU NO.</b>	BUSA027
<b>F WIDTH</b>	145
<b>U WIDTH</b>	135.5
<b>V REPEAT CM</b>	23.5
<b>H. REPEAT CM</b>	33.8
<b>GSM</b>	366
<b>COMPOSITION</b>	50% POLYESTER, 27% VISCOSE, 15% LINEN, 8% COTTON
<b>MARTINDALE</b>	-
<b>WASH CARE</b>	30°C M/C WASH GENTLE CYCLE, IRONING-2 DOT, DRY-HANG DRY, TUMBLE DRY- DON'T, BLEACH- DON'T, DRY CLEAN-CAN DRY CLEAN
<b>END USE</b>	CUSHION, DRAPERY & BLINDS.

◀◀ Back to Layer



## KENTIA | BUSA028

CUST DESIGN	KENTIA
SKU NO.	BUSA028
F WIDTH	145
U WIDTH	135.5
V REPEAT CM	23.5
H. REPEAT CM	33.8
GSM	366
COMPOSITION	50% POLYESTER, 27% VISCOSE, 15% LINEN, 8% COTTON
MARTINDALE	-
WASH CARE	30°C M/C WASH GENTLE CYCLE, IRONING-2 DOT, DRY-HANG DRY, TUMBLE DRY- DON'T, BLEACH- DON'T, DRY CLEAN-CAN DRY CLEAN
END USE	CUSHION, DRAPERY & BLINDS.

◀◀ Back to Layer



## KENTIA | BUSA029

CUST DESIGN

KENTIA

SKU NO.

BUSA029

F WIDTH

145

U WIDTH

135.5

V REPEAT CM

23.5

H. REPEAT CM

33.8

GSM

366

COMPOSITION

50% POLYESTER, 27% VISCOSE, 15% LINEN, 8% COTTON

MARTINDALE

-

WASH CARE

30°C M/C WASH GENTLE CYCLE, IRONING-2 DOT, DRY-HANG DRY,  
TUMBLE DRY- DON'T, BLEACH- DON'T, DRY CLEAN-CAN DRY CLEAN

END USE

CUSHION, DRAPERY & BLINDS.

◀◀ Back to Layer



## KENTIA | BUSA030

CUST DESIGN	KENTIA
SKU NO.	BUSA030
F WIDTH	145
U WIDTH	135.5
V REPEAT CM	23.5
H. REPEAT CM	33.8
GSM	366
COMPOSITION	50% POLYESTER, 27% VISCOSE, 15% LINEN, 8% COTTON
MARTINDALE	-
WASH CARE	30°C M/C WASH GENTLE CYCLE, IRONING-2 DOT, DRY-HANG DRY, TUMBLE DRY- DON'T, BLEACH- DON'T, DRY CLEAN-CAN DRY CLEAN
END USE	CUSHION, DRAPERY & BLINDS.

◀◀ Back to Layer



## HARLOW | BUSA031

<b>CUST DESIGN</b>	HARLOW
<b>SKU NO.</b>	BUSA031
<b>F WIDTH</b>	143
<b>U WIDTH</b>	136
<b>V REPEAT CM</b>	32.2
<b>H. REPEAT CM</b>	34
<b>GSM</b>	440
<b>COMPOSITION</b>	54% POLYESTER, 33% COTTON, 13% VISCOSE
<b>MARTINDALE</b>	-
<b>WASH CARE</b>	ONLY DRY CLEAN, IRON 2 DOTS ON REVERSE SIDE, DON'T BLEACH, DON'T TUMBLE, HANG DRY
<b>END USE</b>	CUSHION, DRAPERY & BLINDS.

◀◀ Back to Layer



## HARLOW | BUSA032

<b>CUST DESIGN</b>	HARLOW
<b>SKU NO.</b>	BUSA032
<b>F WIDTH</b>	143
<b>U WIDTH</b>	136
<b>V REPEAT CM</b>	32.2
<b>H. REPEAT CM</b>	34
<b>GSM</b>	440
<b>COMPOSITION</b>	54% POLYESTER, 33% COTTON, 13% VISCOSE
<b>MARTINDALE</b>	-
<b>WASH CARE</b>	ONLY DRY CLEAN, IRON 2 DOTS ON REVERSE SIDE, DON'T BLEACH, DON'T TUMBLE, HANG DRY
<b>END USE</b>	CUSHION, DRAPERY & BLINDS.

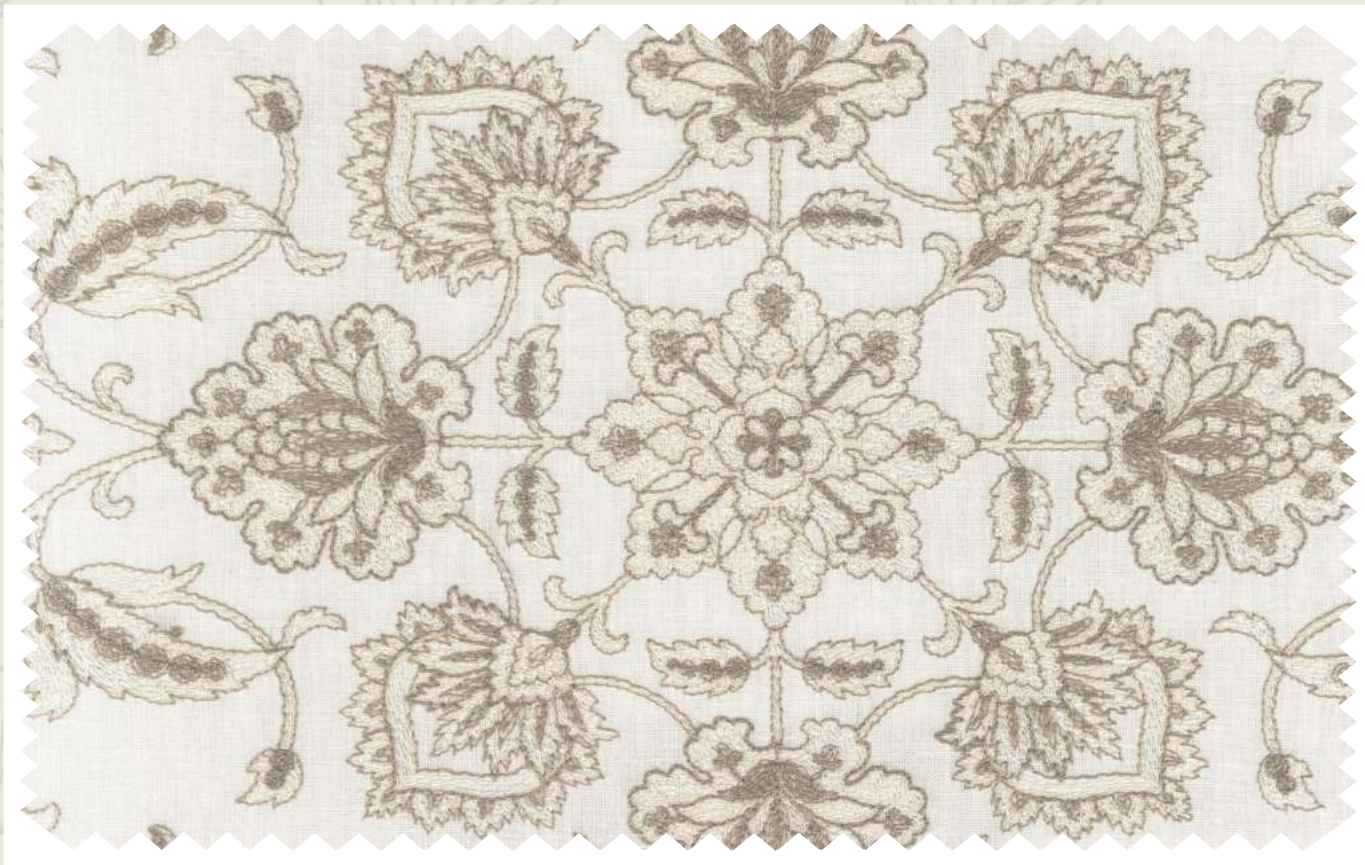
◀◀ Back to Layer



## HARLOW | BUSA033

<b>CUST DESIGN</b>	HARLOW
<b>SKU NO.</b>	BUSA033
<b>F WIDTH</b>	143
<b>U WIDTH</b>	136
<b>V REPEAT CM</b>	32.2
<b>H. REPEAT CM</b>	34
<b>GSM</b>	440
<b>COMPOSITION</b>	54% POLYESTER, 33% COTTON, 13% VISCOSE
<b>MARTINDALE</b>	-
<b>WASH CARE</b>	ONLY DRY CLEAN, IRON 2 DOTS ON REVERSE SIDE, DON'T BLEACH, DON'T TUMBLE, HANG DRY
<b>END USE</b>	CUSHION, DRAPERY & BLINDS.

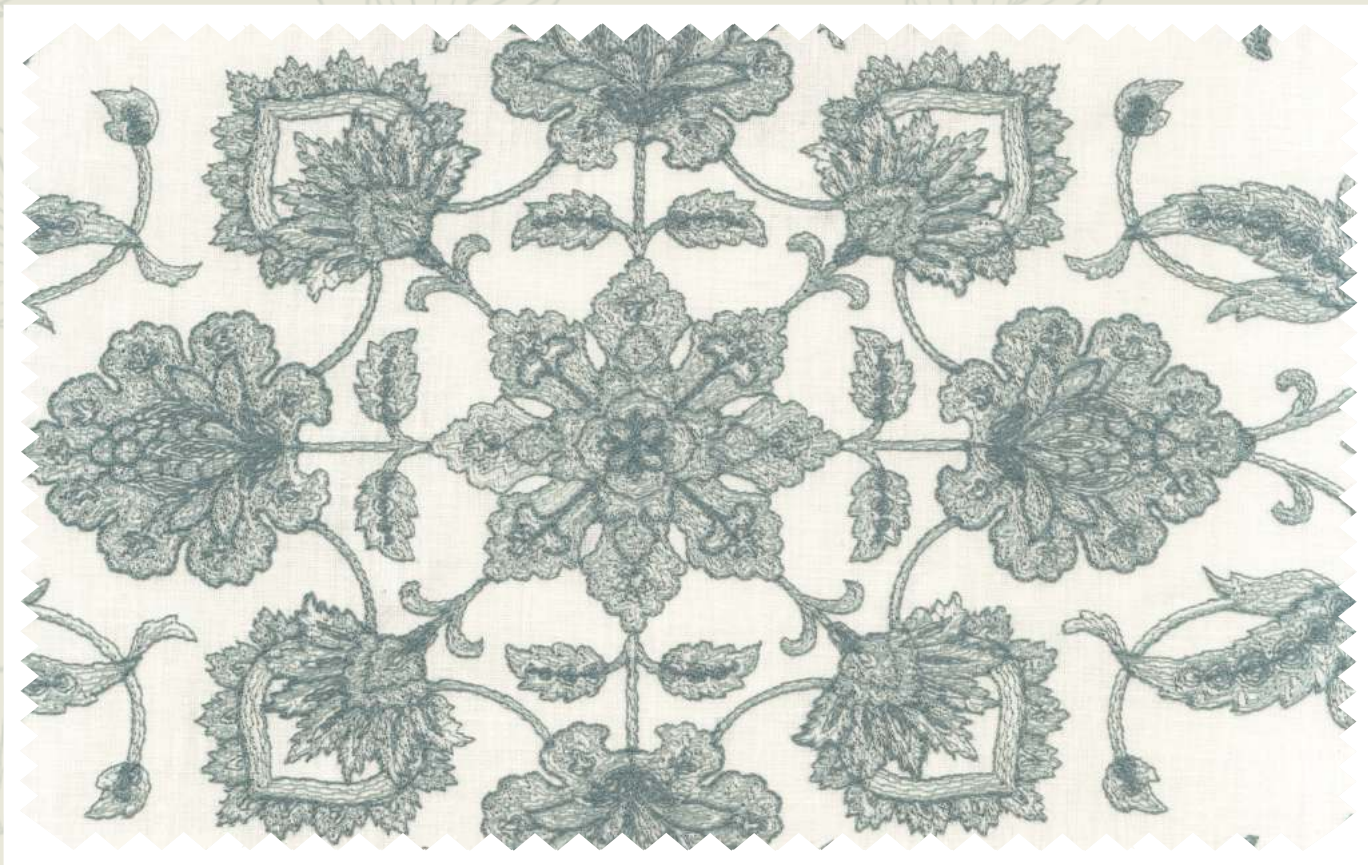
◀◀ Back to Layer



## YUZEN | BUSA034

<b>CUST DESIGN</b>	YUZEN
<b>SKU NO.</b>	BUSA034
<b>F WIDTH</b>	145
<b>U WIDTH</b>	138
<b>V REPEAT CM</b>	31.7
<b>H. REPEAT CM</b>	34.5
<b>GSM</b>	302
<b>COMPOSITION</b>	49% POLYESTER, 31% COTTON, 20% VISCOSE
<b>MARTINDALE</b>	-
<b>WASH CARE</b>	30°C M/C WASH GENTLE CYCLE, IRONING-2 DOT, DRY-HANG DRY, TUMBLE DRY- DON'T, BLEACH- DON'T, DRY CLEAN-CAN DRY CLEAN
<b>END USE</b>	CUSHION, DRAPERY & BLINDS.

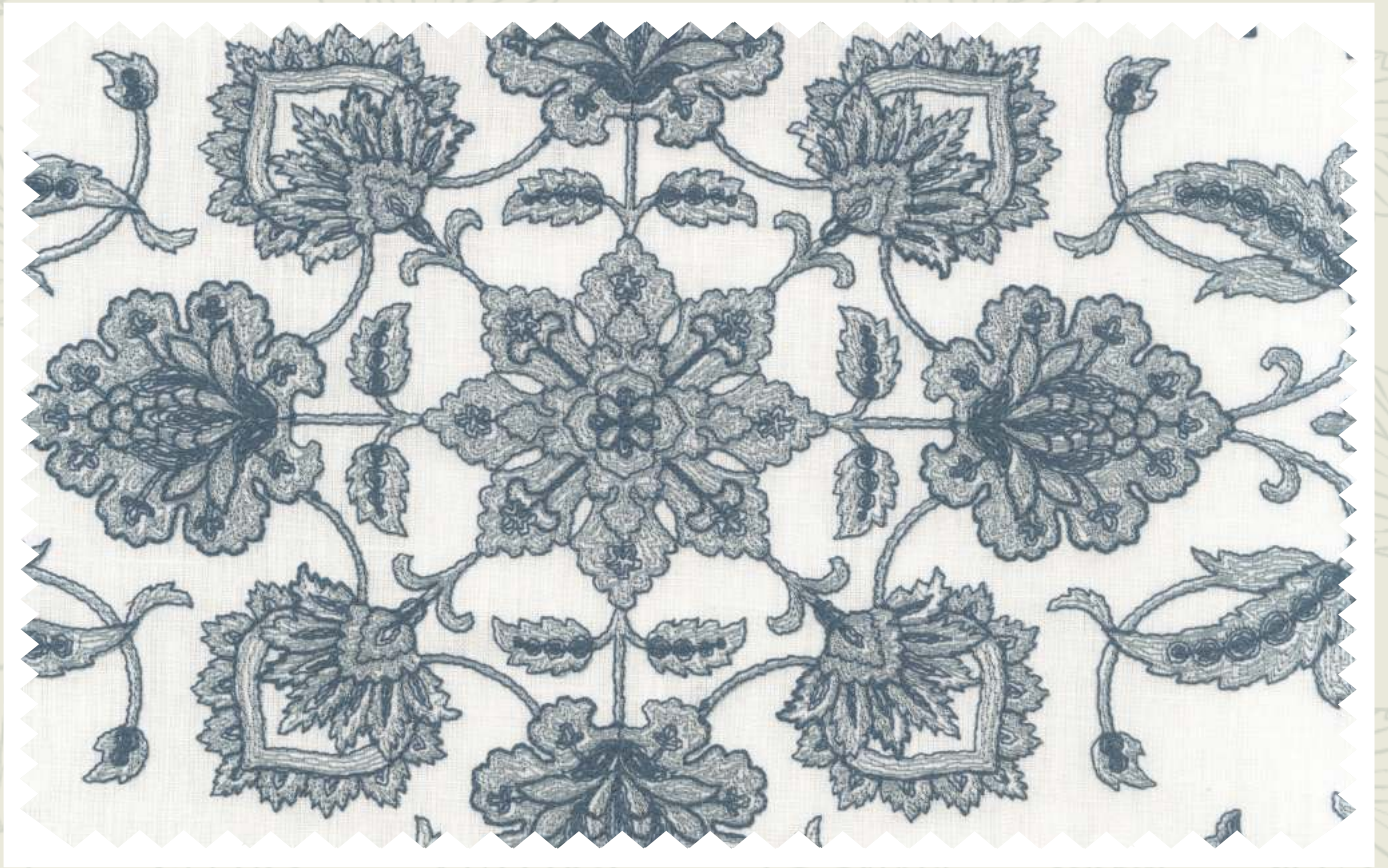
◀◀ Back to Layer



## YUZEN | BUSA035

<b>CUST DESIGN</b>	YUZEN
<b>SKU NO.</b>	BUSA035
<b>F WIDTH</b>	145
<b>U WIDTH</b>	138
<b>V REPEAT CM</b>	31.7
<b>H. REPEAT CM</b>	34.5
<b>GSM</b>	302
<b>COMPOSITION</b>	49% POLYESTER, 31% COTTON, 20% VISCOSE
<b>MARTINDALE</b>	-
<b>WASH CARE</b>	30°C M/C WASH GENTLE CYCLE, IRONING-2 DOT, DRY-HANG DRY, TUMBLE DRY- DON'T, BLEACH- DON'T, DRY CLEAN-CAN DRY CLEAN
<b>END USE</b>	CUSHION, DRAPERY & BLINDS.

◀◀ Back to Layer



## YUZEN | BUSA036

<b>CUST DESIGN</b>	YUZEN
<b>SKU NO.</b>	BUSA036
<b>F WIDTH</b>	145
<b>U WIDTH</b>	138
<b>V REPEAT CM</b>	31.7
<b>H. REPEAT CM</b>	34.5
<b>GSM</b>	302
<b>COMPOSITION</b>	49% POLYESTER, 31% COTTON, 20% VISCOSE
<b>MARTINDALE</b>	-
<b>WASH CARE</b>	30°C M/C WASH GENTLE CYCLE, IRONING-2 DOT, DRY-HANG DRY, TUMBLE DRY- DON'T, BLEACH- DON'T, DRY CLEAN-CAN DRY CLEAN
<b>END USE</b>	CUSHION, DRAPERY & BLINDS.

◀◀ Back to Layer



## GINERVA | BUSA037



CUST DESIGN

GINERVA

SKU NO.

BUSA037

F WIDTH

145.5

U WIDTH

137.5

V REPEAT CM

16

H. REPEAT CM

19.5

GSM

378

COMPOSITION

48% POLYESTER, 29% VISCOSE, 15% LINEN, 8% COTTON

MARTINDALE

-

WASH CARE

30°C M/C WASH GENTLE CYCLE, IRONING-2 DOT, DRY-HANG DRY,  
TUMBLE DRY- DON'T, BLEACH- DON'T, DRY CLEAN-CAN DRY CLEAN

END USE

CUSHION, DRAPERY & BLINDS.

◀◀ Back to Layer



## GINERVA | BUSA038

<b>CUST DESIGN</b>	GINERVA
<b>SKU NO.</b>	BUSA038
<b>F WIDTH</b>	145.5
<b>U WIDTH</b>	137.5
<b>V REPEAT CM</b>	16
<b>H. REPEAT CM</b>	19.5
<b>GSM</b>	378
<b>COMPOSITION</b>	48% POLYESTER, 29% VISCOSE, 15% LINEN, 8% COTTON
<b>MARTINDALE</b>	-
<b>WASH CARE</b>	30°C M/C WASH GENTLE CYCLE, IRONING-2 DOT, DRY-HANG DRY, TUMBLE DRY- DON'T, BLEACH- DON'T, DRY CLEAN-CAN DRY CLEAN
<b>END USE</b>	CUSHION, DRAPERY & BLINDS.

◀◀ Back to Layer



## GINERVA | BUSA039

<b>CUST DESIGN</b>	GINERVA
<b>SKU NO.</b>	BUSA039
<b>F WIDTH</b>	145.5
<b>U WIDTH</b>	137.5
<b>V REPEAT CM</b>	16
<b>H. REPEAT CM</b>	19.5
<b>GSM</b>	378
<b>COMPOSITION</b>	48% POLYESTER, 29% VISCOSE, 15% LINEN, 8% COTTON
<b>MARTINDALE</b>	-
<b>WASH CARE</b>	30°C M/C WASH GENTLE CYCLE, IRONING-2 DOT, DRY-HANG DRY, TUMBLE DRY- DON'T, BLEACH- DON'T, DRY CLEAN-CAN DRY CLEAN
<b>END USE</b>	CUSHION, DRAPERY & BLINDS.

◀◀ Back to Layer





## MEDORA | BUSA040

<b>CUST DESIGN</b>	MEDORA
<b>SKU NO.</b>	BUSA040
<b>F WIDTH</b>	145.5
<b>U WIDTH</b>	138
<b>V REPEAT CM</b>	31.5
<b>H. REPEAT CM</b>	34.3
<b>GSM</b>	348
<b>COMPOSITION</b>	52% POLYESTER, 23% VISCOSE, 16% LINEN, 9% COTTON
<b>MARTINDALE</b>	-
<b>WASH CARE</b>	30°C M/C WASH GENTLE CYCLE, IRONING-2 DOT, DRY-HANG DRY, TUMBLE DRY- DON'T, BLEACH- DON'T, DRY CLEAN-CAN DRY CLEAN
<b>END USE</b>	CUSHION, DRAPERY & BLINDS.

◀◀ Back to Layer



## MEDORA | BUSA041

CUST DESIGN	MEDORA
SKU NO.	BUSA041
F WIDTH	145.5
U WIDTH	138
V REPEAT CM	31.5
H. REPEAT CM	34.3
GSM	348
COMPOSITION	52% POLYESTER, 23% VISCOSE, 16% LINEN, 9% COTTON
MARTINDALE	-
WASH CARE	30°C M/C WASH GENTLE CYCLE, IRONING-2 DOT, DRY-HANG DRY, TUMBLE DRY- DON'T, BLEACH- DON'T, DRY CLEAN-CAN DRY CLEAN
END USE	CUSHION, DRAPERY & BLINDS.

◀◀ Back to Layer



## MEDORA | BUSA042

CUST DESIGN	MEDORA
SKU NO.	BUSA042
F WIDTH	145.5
U WIDTH	138
V REPEAT CM	31.5
H. REPEAT CM	34.3
GSM	348
COMPOSITION	52% POLYESTER, 23% VISCOSE, 16% LINEN, 9% COTTON
MARTINDALE	-
WASH CARE	30°C M/C WASH GENTLE CYCLE, IRONING-2 DOT, DRY-HANG DRY, TUMBLE DRY- DON'T, BLEACH- DON'T, DRY CLEAN-CAN DRY CLEAN
END USE	CUSHION, DRAPERY & BLINDS.

◀◀ Back to Layer

# BUSAN

DESIGN	TRIVIA	CITRA	ESTELLE	PERTH
F WIDTH	144	145	144	144.5
U WIDTH	138	137	140	138.5
V REPEAT CM	23.5	31.5	32.5	23.5
H. REPEAT CM	23	45	27.5	23
GSM	312	394	318	302
COMPOSITION	56% POLYESTER, 30% COTTON, 14% VISCOSE	46% POLYESTER, 32% VISCOSE, 14% LINEN,8% COTTON	58% COTTON, 29% POLYESTER, 13% VISCOSE	55% POLYESTER, 31% COTTON, 14% VISCOSE
WASH CARE				
END USE				

## WASH CARE

Do not Bleach	Machine wash 30°C	Hang Dry	Dry Clean	Do not Tumble Dry	Iron upto 2 Dots

## END USE

Cushion	Drapery	Blinds

# BUSAN

DESIGN	VARDO	DAZE	KALON	KENTIA
F WIDTH	144	144.5	144	145
U WIDTH	136	137	140.5	135.5
V REPEAT CM	16	23.7	2	23.5
H. REPEAT CM	17	34	35	33.8
GSM	465	270	398	366
COMPOSITION	82% POLYESTER, 12% LINEN, 6% COTTON	49% POLYESTER, 35% COTTON, 16% VISCOSE	46% POLYESTER, 33% VISCOSE, 14% LINEN, 7% COTTON	50% POLYESTER, 27% VISCOSE, 15% LINEN, 8% COTTON
WASH CARE				
END USE				

## WASH CARE

Do not Bleach	Machine wash 30°C	Hang Dry	Dry Clean	Do not Tumble Dry	Iron upto 2 Dots

## END USE

Cushion	Drapery	Blinds

# BUSAN

DESIGN	HARLOW	YUZEN	GINERVA	MEDORA
F WIDTH	143	145	145.5	145.5
U WIDTH	136	138	137.5	138
V REPEAT CM	32.2	31.7	16	31.5
H. REPEAT CM	34	34.5	19.5	34.3
GSM	440	302	378	348
COMPOSITION	54% POLYESTER, 33% COTTON, 13% VISCOSE	49% POLYESTER, 31% COTTON, 20% VISCOSE	48% POLYESTER, 29% VISCOSE, 15% LINEN, 8% COTTON	52% POLYESTER, 23% VISCOSE, 16% LINEN, 9% COTTON
WASH CARE				
END USE				

## WASH CARE

Do not Bleach	Machine wash 30°C	Hang Dry	Dry Clean	Do not Tumble Dry	Iron upto 2 Dots

## END USE

Cushion	Drapery	Blinds